



INSTITUTE OF ARCHEOLOGY
AND ART HISTORY OF ROMANIAN
ACADEMY CLUJ-NAPOCA



UNIVERSITATEA TEHNICĂ
DIN CLUJ-NAPOCA

JAHA
JOURNAL OF ANCIENT HISTORY
AND ARCHAEOLOGY

editura
MEGA

Journal of Ancient History and Archaeology

DOI: <http://dx.doi.org/10.14795/j.v13i1>

ISSN 2360 266x

ISSN-L 2360 266x



Scopus®



Clarivate
Analytics



Central and Eastern European Online Library

EBSCO



DOAJ
DIRECTORY OF
OPEN ACCESS
JOURNALS

No. 13.1/2026

CONTENTS

STUDIES

ANCIENT HISTORY

Helena LÓPEZ GÓMEZ

FROM THE MOTHER OF THE GRACCHI TO THE SISTER OF AUGUSTUS: REIMAGINING CORNELIA'S LEGACY IN THE LITERARY AND MATERIAL DEPICTIONS OF OCTAVIA 5

ARCHAEOLOGY

Sergey YARYGIN, Sergazy SAKENOV, Ainagul GANIYEVA

NOMADS OF ZERENDY AND SANDYKTAU AT THE TURN OF ERAS (NORTHERN KAZAKHSTAN) 14

Hakan GÖNCÜ

A MONOLITHIC DORIC ENTABLATURE FROM IASOS 32

Vitalie BÂRCĂ, Alpár DOBOS, Cristinel PLANTOS, Szilárd Sándor GÁL

TWO GEPIDIC AGE BURIALS RECENTLY DISCOVERED AT ALBA IULIA. ARCHAEOLOGICAL AND ANTHROPOLOGICAL EVALUATION 48

Boaz ZISSU, Shemesh YA'ARAN

KHIRBET BEIT 'ATÁB AND THE MÜGHÂRET BIR EL HASÛTAH CAVE COMPLEX: A MULTI-PERIOD ARCHAEOLOGICAL SITE IN THE JERUSALEM HILLS 64

ARCHAEOLOGICAL MATERIAL

Dan George ANGHEL, Sergiu-Traian SOCACIU, Sorin Ilie COCIŞ

THE GLAZED EARTHENWARE OF SUTOR/OPTATIANA 95

Kübra YAZAR, Berna KAVAZ KINDİĞİLİ

ROMAN AND LATE ANTIQUE GLASS BOTTLES IN THE ADANA MUSEUM COLLECTION: AN EVALUATION OF TYPOLOGY AND PRODUCTION TECHNIQUES 113

Burak ARSLAN

STUCCOWORK FROM METROPOLIS: A COMPREHENSIVE RESEARCH ON STYLISTIC FEATURES OF THE STUCCOES IN THE ROMAN BATH-ALAESTRA COMPLEX 132

Vlad VORNIC, Sergiu MATVEEV

ISOLATED MIGRATION-PERIOD FINDS: THE BRONZE FIBULA FROM RADOAIA (SANGEREI DISTRICT, REPUBLIC OF MOLDOVA) 143

Alexander HARIZANOV

FOLLOWING THE LEAD: *PLUMBATAE* IN *SCYTHIA* AND *MOESIA SECUNDA* 153

ARCHAEOOMETRY

Hakan AYCAN, Barış SEMİZ, Onur ZUNAL

CHARACTERIZATION OF EASTERN SIGILLATA C (ESC) FROM THE YK SECTOR AT KLAROS: AN ARCHAEOLOGICAL AND ARCHAEOMETRIC APPROACH 168

Wahidullah ENAYAT, Ahmet KÖROĞLU, Davut YİĞİTPAŞA

APPLICATION OF ANALYTICAL TECHNIQUES AND MACHINE LEARNING MODELS FOR THE IDENTIFICATION AND CULTURAL ATTRIBUTION OF ANCIENT POTTERY: A CASE STUDY FROM BOLU CLAUDIOPOLIS, TURKEY 179

ARCHAEOLOGICAL TOPOGRAPHY

Cristian FLOCA, György SIPOS, Florin GOGÂLTAN, Alexandru HEGYI, Tamás BARTYIK, Dávid FILYÓ

SETTLING STRATEGIES OF HUMAN COMMUNITIES IN PANNONIAN HOLOCENE RIVERSCAPE. A MICRO ZONE CASE STUDY FROM BANAT (ROMANIA) 193

EPIGRAPHY AND PAPHYROLOGY

Héctor ARROYO-QUIRCE

REVISITING THE CULT OF ARES IN GRECO-ROMAN ASIA MINOR 214

Péter KOVÁCS

SOME CONSIDERATIONS ON THE PROVINCIAL POPULATION IN NORTHERN PANNONIA IN THE 6TH CENTURY IN THE LIGHT OF WRITTEN AND EPIGRAPHIC SOURCES 224

NUMISMATICS

Metodi MANOV

AGAIN ABOUT THE COINS OF MOSKON – AN ENIGMATIC RULER FROM DOBRUDJA IN THE HELLENISTIC PERIOD 240

Cristian GĂZDAC, Adrian-Daniel STAN

WHY DID THEY NOT RECOVER THE HOARDS? INSECURITY IN THE ROMAN EMPIRE 245

Hacer SANCAKTAR, Mehmet ÖZHANLI

COINS AND THE TRANSFORMATION OF A SANCTUARY: NUMISMATIC EVIDENCE FROM THE SANCTUARY OF MEN ASKAENOS IN PISIDIAN ANTIOCH..... 258

Stefan KRMNICEK

COINS IN THE WRONG PLACE? CURIOUS DEPOSITIONS, HIDDEN HOARDS, AND ACCIDENTAL AFTERLIVES..... 291

HISTORIOGRAPHY

Alin HENȚ

THE PERSISTENCE OF THE PAST: A CRITICAL PERSPECTIVE
OF ROMANIAN LATE IRON AGE ARCHAEOLOGY
(AND ITS RELATED FEATURES) IN POST-COMMUNISM
AND NEOLIBERALISM 297

CULTURAL HERITAGE PROTECTION

Silviu MILOIU, Célio Gonçalo MARQUES, Sergiu MUSTEAȚĂ, Marusya SMOKOVA Lucia NOVÁKOVÁ, Vojtěch BLAŽEK, Renato DE LEONE

GAMIFICATION AS A CATALYST FOR COMMUNITY-BASED
HERITAGE WORK IN LOW-DENSITY TERRITORIES:
SELECTED BEST PRACTICES FROM EUROPE 317

REVIEWS

Victor SAVA

Stanislav Grigoriev, Indo-Aryans in the Bronze Age, Archaeopress
Archaeology, Bicester 2025, 298 pages, 92 figures, 2 tables. ISBN
Hardback: 9781805830665, Digital: 9781805830672, DOI
10.32028/9781805830665 327

Ruslan TSAKANYAN

Yervand H. Grekyan. The Urartian Onomasticon: A Prosopographic
Study, ARAMAZD: Armenian Journal of Near Eastern Studies.
Editor-in-Chief Aram Kosyan, Vol. XVII, Issue 2. Association for
Near Eastern and Caucasian Studies. Archaeopress Publishing Ltd:
Oxford, UK. Yerevan-Oxford 2023. ISSN 1829-1376, ISBN 978-1-
80327-706-6. 128 pp. <https://doi.org/10.32028/ajnes.v17i2> ... 330

Ruslan TSAKANYAN

Yervand H. Grekyan (ed.), By God's Grace: Ancient Anatolian
Studies Presented to Aram Kosyan on the Occasion of his 65th
Birthday. Ancient Near Eastern Studies Supplement Series 61.
Leuven – Paris – Bristol, CT.: Peeters Pub & Booksellers, 2023. Pp.
XX+366. ISBN: 9789042948686; E-ISBN: 9789042948693 332

Victor COJOCARU

S. Yu. Monakhov, E. V. Kuznetsova, A. N. Kovalenko, N. B.
Churekova, A. G. Yazovskikh, Amphorae of the 6th–3rd Centuries
BC from Museum Collections of Rostov-on-Don [in Russian],
Saratov: Amirit, 2025, 284 pages, 123 figs, 5 tables, and 199
catalogue illustrations integrated into the text. ISBN 978-5-00207-
976-6 334

Vitalie BÂRCĂ

O. V. Symonenko, O. S. Dzneladze, D. M. Sikoza, Atlas of Late
Scythian Sites of the Lower Dnieper [In Ukrainian], Kyiv: Institute
of Archaeology of the National Academy of Sciences of Ukraine,
2024. 214 p. ISBN 978-617-7810-43-7 340

Design & layout: Petru Ureche



EDITURA MEGA | www.edituramega.ro
e-mail: mega@edituramega.ro

ARCHAEOLOGY

TWO GEPIDIC AGE BURIALS RECENTLY DISCOVERED AT ALBA IULIA. ARCHAEOLOGICAL AND ANTHROPOLOGICAL EVALUATION

Abstract: The article presents two inhumations discovered during rescue archaeological excavations conducted at Alba Iulia, at the nearby site of Apulum II. These are ascribed to the Gepidic period (5th–6th century AD), which constitutes the main focus of the study, and are integrated into a broader archaeological context characterised by extensive habitation during this period. The first burial belongs to a mature male individual, placed in supine position with the head oriented to the west, within a rectangular pit. The grave had been disturbed in antiquity, with only a few coffin nails identified. The anthropological analysis indicates an average-to-tall stature and reveals evidence of pronounced dental wear and degenerative spinal changes, consistent with age and lifestyle. The second burial belongs to an adult female, placed in a similar position within an oval pit. The grave goods comprise a decorated double-sided comb and an iron buckle. The typological analysis of the comb, characterised by decoration made in the “stab-and-drag” technique and zigzag motifs, indicates a broad dating between the second half of the 5th century and the 6th century AD. The authors place the two graves within a more extensive Gepidic cemetery identified through previous research in the area, with more than forty graves. Although the lack of a complete publication of these finds hinders the reconstruction of the cemetery layout, it is suggested that the analysed graves belong to one of its peripheral areas. Traces of habitation were also identified nearby, indicating the presence of local communities. In conclusion, the authors highlight the high density of habitation in the Alba Iulia area during the 5th–6th century AD and emphasize the role of Roman period infrastructure in shaping the post-Roman settlement pattern. Moreover, they draw attention to the need for systematic publication of finds for a better understanding of settlement dynamics

Keywords: *Apulum, Alba Iulia, Roman Dacia, graves, inhumation, burial set-ups, the migration period, the Gepids.*

INTRODUCTION

The two burials discussed herein have been yielded by the rescue archaeological excavations conducted during the preliminary phase of the investment project “*Urban regeneration of the Olympic swimming pool zone by landscaping green areas and building a sports and recreation base*” in Alba Iulia

Vitalie BÂRCĂ

Institute of Archaeology and Art History of Cluj-Napoca, Romania
vitalie_barca@yahoo.com
<https://orcid.org/0000-0003-3078-374X>

Alpár DOBOS

National Museum of Transylvanian History, Cluj-Napoca, Romania
alpardobos@yahoo.com
<https://orcid.org/0009-0005-2180-0255>

Cristinel PLANTOS

“1 December 1918” University of Alba Iulia, Romania
cristinel.plantos@uab.ro
<https://orcid.org/0009-0004-1094-5881>

Szilárd Sándor GÁL

Mureş County Museum, Romania
szilank2001@yahoo.com
<https://orcid.org/0000-0002-2274-0216>

city, at no. 3 Republicii Blvd., with the Alba Iulia Municipality as beneficiary¹.

The investigated land plot lies in the proximity of the Olympic swimming pool in Alba Iulia Municipality (Pl. 1/1), within both the former courtyard of the property, on the eastern and northern sides of the existing building, as well as outside said courtyard, on same sides (Pl. 1/2).

Geographically, the examined area is located in the northern part of Alba Iulia Municipality (Pl. 1/1), on a high terrace set at approximately 3.2 km northwest of the Mureş, respectively at 2.1 km west of Ampoi stream.

The excavated area is situated by the limit of the archaeological site Apulum II², at ca. 1200 m north the fortress of *XIII Gemina*³ (Pl. 5) that yielded numerous archaeologically important sites dated to several historical periods (the Neo-Eneolithic period, the Bronze Age, Iron Age I and II, the Roman and post-Roman periods (including burials ascribed to the Gepids), respectively the early-medieval period) with significant and important finds⁴, well known among the specialists in the field.

According to all archaeological investigations conducted in this geographical area, it may be noted that land had been significantly and densely inhabited over a vast space and for an extended period. This suggests that the area, located within the current territory of Alba Iulia, has a remarkable archaeological potential, including for the period of the Migrations.

GENERAL DATA ON THE ARCHAEOLOGICAL FINDS

Subsequent to the archaeological investigations, a number of two hundred and sixteen archaeological features have been identified and comprehensively researched within the perimeter of the investment project (see Pl. 2/2), framed chronologically to the Bronze Age, the Iron Age II, the Roman and post-Roman periods, respectively the Modern period⁵.

The Bronze Age remains are represented by three features (Features 9, 30 and 132), part of a settlement whose nucleus lies on neighbouring plots, well-documented by previous research. Additionally, we note the presence of Eneolithic pottery fragments (of Petreşti type) lacking an archaeological context, likely entrained from the *Lumea Nouă* site, located not far from the area of interest here.

Among the few remains dated to the La Tène yielded by the investigations here, we mention a horse burial (Feature 143)⁶. This adds to other two similar finds made in 2018 on the neighbouring plot, where during 2018-2021 have been investigated approximately one hundred and eighty features

related to an Iron Age II settlement that may be framed, *grosso modo*, to the 2nd-1st century BC⁷.

Roman date remains are statistically most numerous, with burial features (graves or burial space set-ups) being predominant. Approximately one hundred graves have been identified and investigated, alongside several other finds which, according to the shape and location of pits, are likely infant burials that due to taphonomic factors or looting, may explain the lack of skeletal remains or grave goods at the time of excavation.

Synthetically, it is worth mentioning that **inhumations** numerically predominate to the detriment of cremations, with sixty-one inhumations and thirty-nine cremations discovered. At first glance, inhumations may be attributed to forty-eight children, while thirteen certainly belonged to adult subjects⁸. Last but not least, we note the presence of burial set-ups in the form of flat circular or rectangular ditches⁹, some including graves within the interior of the enclosures¹⁰.

The archaeological excavation addressed here also yielded a series of finds dated to the post-Roman period (the 4th-5th/6th century AD), consisting of both habitation and burial structures. The first generally have a flat circular opening, then a conical excavation, with the bottom sharp, whose furnishing comprised animal bones, tile and building material remains, originating from structures dismantled during the Roman period¹¹.

The burial finds, referenced here in more detail, are illustrated by two adult inhumations (Feature 11 and 192) and are part of the cemetery ascribed to the Gepids, investigated nearby during the last decades.

Among Modern date finds, stands out a house, which on the basis of the discovered artefacts, including a coin, dates starting with the second half of the 18th century¹², being uncommon for this area of the city, as the historical mapping does not illustrate any inhabitancy nucleus for the respective period of time.

GENERAL DATA ON THE GEPIDIC BURIALS

Grave 1 (Feature 11) (Pl. 6)

Inhumation. Shape of the grave: rectangular with rounded corners. Orientation: W-E. Dimensions: 1.84 x 0.60 m. Depth: 2.10 m from the level of identification. When

⁷ BĂRCĂ *et alii* 2023, 77.

⁸ BĂRCĂ *et alii* 2023, 78-81; PLANTOS *et alii* 2024, 211-218.

⁹ Burial set-ups, similar to the above mentioned, are recorded within several sites from Pannonia, being frequently present in civil and military cemeteries (BESZÉDES/SZILAS 2006, 156-158; BESZÉDES/SZILAS 2007, 239-240; MRAV 2010, 91, 94, Fig. 6; BÓNIS 1960, 93, Fig. 23; TÓRÖK 1961, 65, 71, Fig. 20; ILON 2015, vii-viii, 94, Fig.3; UBL 1974, 421). Burial set-ups with ditches of various flat shaped ditches, with or without graves inside are frequent in the Sarmatian environment from both the north-Pontic area and the Pannonian Plain (KULCSÁR 1998, 35-40, 95-96, 111; BĂRCĂ 2015; BĂRCĂ 2020; BĂRCĂ/COCIŞ 2013; BĂRCĂ *et alii* 2024, 179-185, Fig. 9-12; BĂRCĂ/SYMONENKO 2009, 215-218).

¹⁰ BĂRCĂ *et alii* 2023, 79-80, Pl. 27; 31; PLANTOS *et alii* 2024, 214-215, Pl. XIX; XXI. Such burial set-ups were discovered at Alba Iulia and neighbouring areas, excavated in previous years.

¹¹ BĂRCĂ *et alii* 2023, 81, Pl. 29.

¹² BĂRCĂ *et alii* 2023, 82, Pl. 33.

¹ For additional information on the location, perimeter description, research goals and description see BĂRCĂ *et alii* 2023, 75-77; BOUNEGRU *et alii* 2023; PLANTOS *et alii* 2024, 207-208, 209-210.

² OTA 2012.

³ MOGA 1998.

⁴ For an overview of the research and finds in this area with complete bibliography see BĂRCĂ *et alii* 2023, 76; PLANTOS *et alii* 2024, 208-209.

⁵ BĂRCĂ *et alii* 2023, 77-83; PLANTOS *et alii* 2024, 210-218.

⁶ BĂRCĂ *et alii* 2023, 77, Pl. 14; 32; 47/2; GUDEA *et alii* 2024.

excavated, another inhumation was disturbed (Feature 84) oriented E-W (head eastwards), dated to the Roman period.

The grave had been disturbed in antiquity. In the western wall of the burial pit, five iron nails from the coffin were identified.

In the grave an adult individual was buried, placed in supine position with the head oriented towards west. The skeleton was relatively well preserved. The upper limbs were flexed at the elbows with the hands placed on the pelvis, while the legs were fully extended. The cranial vault was in good condition, whereas the viscerocranium (facial area) survived fragmentarily. Fragments of the zygomatic bone, jaw and mandible were recovered, along with the cranial vault and facial area fragments. Teeth show heavy wear (dental formula 2123):

D.	S.
M2, C, I2	PM2, M1, M3, M3
D.	S.
M3, M1, PM2, PM1, C, I2, I1	I1, I2, C, PM1, PM2, M1, M2

Age estimation: the dental abrasion, ectocranial and endocranial sutures (closed sutures) indicate an adult-maturus individual (aged over 50).

Gender determination: long bone dimensions (femoris head 48mm), skull features (glabella, occipital protuberance, mandible morphology, etc.) are indicative of a male individual.

Stature estimation: long bone dimensions (clavicular 137mm, ulna 252mm, radius 239mm, humerus 312mm, humeri head 47mm, femur 447mm, femoris head 48mm, tibia 350mm, calcaneus 86mm) evidence the stature of an average-high height individual (1.66 m).

Pathology/ epigenetic marks: Dental abrasion (wear down to the dentine and a fractured crown in the case of the maxillary canine) suggests primitive diet based on raw food and poor-quality cereals. Evidence of osteoarthritis may be noted in the atlas and axis vertebrae (which are ossified), along with osteophytes on the lumbar vertebrae (due to age and lifestyle).

Grave 2 (Feature 192) (Pl. 7-8)

Inhumation. Shape of the grave: oval. Orientation: WSW-ENE. Dimensions: 1.90 x 0.65 m. Depth: 0.25 m from the level of identification. It was cut through a Roman period trench (Feature 170).

In the grave an adult individual was buried, placed in supine position with the head oriented towards WSW. The skull was tilted to the left, the arms were stretched along the upper body, and the legs were stretched.

From the fragmentary skeleton, fragments of the cranial vault (temporal bone, parietal bone) and the facial area (fragments of the mandible and maxilla) were identified¹³.

¹³ Owing to the marked frailty of the bones at the time of discovery and during the grave examination, the long bones no longer survived intact when the anthropological analysis was performed.

Teeth of the mandible and jaw were recovered (dental formula 2123):

D.	S.
-	PM2, M1
D.	S.
M3 (fallen post mortem), M1, PM2, PM1, PM2, PM1	I2 (fallen post mortem), M1, C, PM1, PM2

Postcranial skeleton: fragments of the upper limbs (humerus, radius without superior epiphyses), pelvis fragments (ilium, ischium), cervical and thoracic vertebrae and a calcaneus (bone length 73 mm) were recovered. Fragments of the lower limbs were identified: left and right femur without the lower portions (femoral head diameter 41 mm) and the right tibia (bone length).

Age estimation: the skeleton belongs to an adult individual, young (sutures are relatively open – over 30 years of age).

Gender determination: long bone dimensions (femoral head diameter 41 mm) evidence the features of a female individual.

Stature estimation: dimensions of the surviving bones evidence the stature of an average height individual (1.55 m).

Pathology/ epigenetic marks: an epigenetic variation is noticeable on the skull: the metopic suture.

The graves goods include the following:

1. Bilateral comb, surviving fragmentarily (**Pl. 8/3-4**), discovered in the right shoulder area (**Pl. 8/4-5**). It has two rows of teeth and is composed of three layers (the central plate and the two handle plates). The middle plates of the handle are attached with four bronze rivets. One of the plates, in very good condition, is decorated with two rows of double incised lines (shaped as successive dots), parallel and horizontal (one on the edge and one in the middle) plus another double zig-zag line on the other edge of the plate. Other rows of double incised lines start obliquely from the four corners of the plate. The decoration stands out by very fine craftsmanship (**Pl. 8/3-4**).
2. Buckle with oval frame, made of iron (**Pl. 8/1-2**) located near the right knee (**Pl. 7/5**).

The comb from grave 2

Both grave goods from burial no. 2 belong to object types commonly encountered in the archaeological material of the Gepidic period.

Combs are among the most frequent grave goods of this period, both in female and male burials; however, their frequency within the different cemeteries varies on a rather large scale.¹⁴ The earliest composite double-sided combs are already attested in the Roman provinces from the late 4th century, particularly in Pannonia. Later, during the 5th century, this comb form became the most widely used type in the Carpathian Basin¹⁵. In the Gepidic milieu, their popularity continued uninterrupted into the 6th century,

¹⁴ BÓNA/NAGY 171, 97, 2002, Pl. 18.

¹⁵ See e.g. BÍRÓ 2000, 171–172; OTTOMÁNYI 2001, 49–50; IVANIŠEVIĆ *et alii* 2006, 35–36; MASEK 2016, 106.

when they represent the overwhelming majority of comb finds from both cemeteries and settlements¹⁶.

A significant proportion of the double-sided combs are decorated on one or, less often, on both side plates. The ornamentation varies considerably, sometimes combining different techniques and motifs. The comb from grave 2 at Alba Iulia – Republicii Boulevard 3 is decorated using a single technique. The decoration consists of double stab-and-drag lines forming two wedge-shaped motifs at the ends, as well as a zigzag and two straight lines on the surface of one of the side plates.

The stab-and-drag decoration technique¹⁷ was popular during the Late Roman period in both Pannonia and the Hungarian Plain, mainly in the late Sarmatian milieu¹⁸, and it remained one of the common ornamental techniques during the Gepidic period¹⁹. Nevertheless, certain differences can be observed in the decorative motifs employed. In Pannonia, this technique appears predominantly on combs with semicircular handle²⁰ and, to a lesser degree, on double-sided specimens²¹. Albeit not unencountered, this ornamentation is very rare on the territory of the Sântana de Mureș-Cherniakhov culture. In this context, it occurs mainly on items with a single row of teeth and a semicircular handle decorated with a stylized animal²².

In Transylvania, two such specimens are known from the late Roman Imperial Age²³ and one from the D1 period. The latter was discovered in the settlement at Suceag, in a possible workshop area, alongside other combs and antler debris²⁴. Together with an item with a high handle decorated with stag-and-drag lines combined with ring-and-dot motifs²⁵, it provides evidence for the local production of combs decorated with the discussed technique at the end of the 4th – beginning of the 5th century. Except for the specimen from Sângeorgiu de Mureș²⁶, stag-and-drag decoration no longer occurs on combs with semicircular handle in Transylvania after the middle of the 5th century.

Both the straight and the double zigzag lines present on the comb from Alba Iulia are characteristic of the Gepidic

period, although a few earlier occurrences are known from the Late Roman Imperial Age²⁷. Usually, the side plates are decorated either with a pair of zigzag lines separated by a straight one or with a single framed zigzag line placed in the central area. In this respect, the combination observed on the comb from Alba Iulia is somewhat less usual. In some cemeteries, specimens with stag-and-drag decoration are the most frequent comb types²⁸. The mapping of the pieces discovered in the Hungarian Plain has revealed certain regional preferences: in the Middle Tisza region typically the entire side plates were decorated with different stag-and-drag motifs, whereas in the southern area these were often combined with incised decoration²⁹.

Taking a closer look on Transylvania, it can be observed that, for the moment, double-sided combs decorated with stag-and-drag straight, zigzag, or wavy lines occur most frequently in the valley of the Someșul Mic River and its tributaries³⁰, although a few specimens are also known from Morești³¹ in the Middle Mureș Valley and from southern Transylvania³². From the north-eastern area, such combs are currently known from a single site, which appears to have a slightly later chronological position³³. Nevertheless, given the current state of research and publication, this distribution pattern remains uncertain for the time being.

From a chronological point of view, the comb from grave 2 is not suitable for a tighter dating than the period between second half of the 5th century and the 6th century.

CONCLUSIONS

Even though the two burials are situated at a rather large distance from one another, it seems that they were part of

¹⁶ As already evidenced by the first comprehensive collection of data on the Gepidic Age cemeteries: CSALLÁNY 1961, 252. Since then, several new studies and monographs confirmed these results: for a short overview see B. TÓTH 2022, 9–12.

¹⁷ Because it resembles the punched decoration applied to metal objects, it is sometimes interpreted as an imitation of this technique: T. BÍRÓ 2002, 43; PINTYE 2009, 171. For the different terms used for the stab-and-drag decoration in the archaeological literature, see MASEK 2016, 133.

¹⁸ See e.g. PINTYE 2009, 171–172, Fig. 6–7; MASEK 2016, 153, Cat. no. 8, Fig. 2/1.

¹⁹ T. BÍRÓ 2002, 59; MASEK 2016, 133–136.

²⁰ The combs with semicircular handle and stab-and-drag decoration were considered of Pannonian origin by T. BÍRÓ 2002, 59.

²¹ T. BÍRÓ 2002, 43, Fig. 76–81.

²² Such combs are rather rare, their counterparts are known from Pannonian sites: HORED T 1982, 140–141, Fig. 56; T. BÍRÓ 2002, 50–55; LĂZĂRESCU/OPREANU 2022, 418, Pl. IV/1.

²³ Târgu Mureș, grave 2: KOVÁCS 281–280, 1915, Fig. 37; Mediaș: HORED T 1941, 122, no. 4, Pl. 21/2. On the specimen from Mediaș the body of the animal is filled with ring-and-dot motifs.

²⁴ LĂZĂRESCU/OPREANU 416, 2022, no. 1, Pl. II/1; OPREANU/LĂZĂRESCU 97–96, 2022, no. 1, Pl. V/1.

²⁵ OPREANU/LĂZĂRESCU 2022, 98–99, no. 3, Pl. V/2.

²⁶ Both on the comb and the case it is combined with ring-and-dot ornaments: DOBOS *et alii* 2021, 332, no. 3, Fig. 8/1, Fig. 9/3.

²⁷ E.g. from Nyíregyháza-Császárszállás, Site 137, feature no. 278 in late Sarmatian context and from Mihălășeni, grave 309 in the Sântana de Mureș-Cherniakhov milieu: PINTYE 2009, Fig. 7/2; ȘOVAN 2009, 98, Pl. 174/3.

²⁸ E.g. at Szolnok-Szanda: BÓNA 2002, or Tiszaug: TÓTH 2002, 13.

²⁹ MASEK 2016, 136.

³⁰ A few examples can be mentioned from the partially published site at Florești-Polus Center: two pieces decorated with straight and zigzag lines were discovered in house Cx. 02B: LĂZĂRESCU 2009, 321, Pl. VII/1–2, and one specimen in grave Cx. 41B: FERENCZ *et alii* 2009, Pl. XVI/1, Pl. XVIII/4. A further comb decorated with straight lines combined with incised vertical lines was published in an exhibition catalogue: POLUS 2008, 39, no. 131. Another comb ornamented with zigzag lines is known from the cemetery at Căpușu Mare: ȘANTIERUL 1952, Fig. 1/16; DOBOS 2009, 220, Fig. 4/10. In the eastern area, three specimens can be mentioned from Iclod, one discovered in grave 1 (here the stab-and-drag wavy lines are framed by incised vertical lines): HICA-CÎMPEANU 1978, 287, Fig. 2/1, and two in the recently discovered, yet unpublished cemetery, graves Cx. 139 and Cx. 171: TRIF/GLIGOR 2022, Pl. II/8, Pl. III/5. A further comb decorated with straight and zigzag lines was discovered in house no. 2 at Țaga: PROTASE 2003, 40–41, Fig. 28/3.

³¹ Graves 3 and 45. In the settlement it occurs on a comb with case, discovered in house no. 10, where the stag-and-drag decoration consisting of straight and wavy double lines is combined with incised lattice pattern: HORED T 1979, Fig. 72/3; 45/16; 81/10; Pl. 42/10.

³² At Bratei, stag-and-drag horizontal lines framed by incised vertical lines decorate a comb discovered in the area of cemetery 3, originating most likely from a grave: BĂRZU 1991, 213, Fig. 3/3; 6/2. Other two specimens come from settlement 1, houses 23 and 31: BĂRZU 1994–1995, Fig. 17/9, 11. A further comb decorated with a double zigzag line framed by incised lines was discovered in grave 3 at Sânmiclăuș: ANGHEL/BLĂJAN 1974, 325, Fig. 4/6.

³³ Galații Bistriței, graves 21 and 26: HARHOIU 2008, 199, Pl. 3/G21.1; 4/G26.2.

a larger cemetery, graves of which have been identified at several points in the surroundings. Unfortunately, none of these graves have been published so far; therefore one must rely on data accessible from field reports, without the possibility, for the moment, of reconstructing the plan of the cemetery.

The first graves were discovered in 2006 during rescue excavations preceding the construction of the Christian Centre (Centrul Creștin P.I.E.), located in the vicinity of the area where the two burials discussed here were discovered, to the north-west. Here, in the south-eastern area, 13 graves were unearthed³⁴. Another 24 graves were discovered in 2018–2021, during rescue excavations carried out for the construction of the so-called “Centenar 1” residential complex, located to the north³⁵. Further burials were identified to the east during rescue excavations undertaken in 2021³⁶. Two additional graves were discovered in 2025³⁷, one to the north of the excavations carried out in 2018–2021 and another during repair works undertaken on Alcalá de Henares Street³⁸.

Taking the above into consideration, these graves most likely belonged to the same cemetery, whose extent remains unknown. Up to date, more than 40 burials have been identified. The internal structure of the cemetery can be established only after the publication of the results obtained from the aforementioned rescue excavations. For the moment, one can only observe that the graves discussed in this paper might be located in the peripheral area of the cemetery, as they are rather scattered. It seems likely that the community that buried its members here lived nearby, as attested by several settlement features (dwellings, pits etc.) unearthed during some of the abovementioned excavations.

Besides this northern cemetery and settlement, other find spots are also known within the territory of the city. Unfortunately, the majority of them are still unpublished; thus, it is difficult to obtain a more accurate picture. In the vicinity of the former Roman legionary fort, two find spots with funerary remains can be mentioned. A partially excavated cemetery was identified on Horea Avenue, nos. 22 and 22A, consisting to date of 41 graves³⁹. Four burials were discovered in the Unirii Park, west of the Roman military fort, during the rescue excavation preceding the construction of the artesian fountain situated in the centre of the park⁴⁰. It seems plausible that these funerary discoveries can be connected to the settlement features discovered inside the

Citadel, that is, within the territory of the legionary fort. Traces of habitation from the 5th–6th centuries have been identified mainly in the south-western area, consisting of a layer and traces of sunken houses, most of them at least partially destroyed by later features⁴¹.

A third group of find spots is situated in the south-western area of the city. The recently discovered female burial on Bârdușei Street, no. 51, appears to be a solitary grave.⁴² In the same area, east of this grave, another group consisting of 12 burials was discovered at the site called Recea-Monolit or Dealul Furcilor-Monolit⁴³. In this area, a settlement generally dated in the 4th–6th centuries has also been partially excavated⁴⁴.

Even though the actual state of research does not permit the drawing of firm conclusions regarding the settlement pattern within the territory and surroundings of the former Apulum, the situation presented above suggests that several, probably rather small communities lived in the area during the 5th–6th centuries. Since none of the sites have been exhaustively excavated and published, the chronological relationship between them remains uncertain. It can be presumed that, at least partially, these communities existed simultaneously. In any case, the density of finds indicates rather intensive habitation and, at the same time, underlines the importance of the area.

This situation cannot be merely accidental; the remains of the Roman infrastructure undoubtedly had a crucial impact on the evolution of the settlement pattern of the period. In general, the former cities of Roman Dacia, situated along the most important communication routes, can be considered focal points of the settlement structure during the Gepidic period⁴⁵. It suffices to mention here the valley of the Someșul Mic River, with the well-known princely graves from Apahida and other important sites in the surroundings of the ancient city of Napoca⁴⁶. Similarly, several settlement and funerary finds are known both from the legionary fort at Potaissa and its surroundings⁴⁷. It is the task of future research to investigate in greater detail the correlations between the Roman infrastructure and the post-Roman settlement structure on the territory of the former province of Dacia.

Acknowledgement

This work was funded through a grant from the Ministry of Education and Research, CCCDI–UEFISCDI, project “Centre of Excellence in Digital Cultural Heritage: Innovation in Digitization and Digital Investigation based on Cutting-Edge Technologies”, no. PN-IV-P6-6.1-CoEx-2024-0206, within PNCDI IV.

³⁴ INEL/GLIGOR 2007.

³⁵ Unpublished, excavation by R. I. Ota, I. A. Lascu, and G. V. Bounegru. Information kindly provided by Dr. Radu Ota, to whom we also extend our thanks on this occasion.

³⁶ Unpublished, excavation by G. Cupcea, A. I. Bobină, B. Bobină, D. G. Bogdan, M. Gui, S. A. Manolescu, A. Fetcu, M. C. Marton, B. V. Păclisan, I. A. Lascu, G. V. Bounegru. We gratefully acknowledge the information provided by Bogdan Păclisan and Ana Fetcu.

³⁷ Unpublished, excavation by C. Plantos, V. Bărcă, R. Trif, D.-C. Țuțianu.

³⁸ Unpublished, excavation by M. Gligor and R. Trif. Information kindly provided by Raul Trif, to whom we are grateful.

³⁹ 18 graves were discovered in 2004: POPA *et alii* 2004, 208–210; further 23 burials were identified in 2019: unpublished, mentioned in BALTEȘ *et alii* 2022, 238, footnote 54.

⁴⁰ INEL *et alii* 2007, 61.

⁴¹ HEITEL 1985, 223–224; HAIMOVICI/BLĂJAN 1989; TĂNASE 2008; MARCU *et alii* 2021, 20.

⁴² BALTEȘ *et alii* 2022.

⁴³ MOGA *et alii* 2007, 66–67.

⁴⁴ MOGA *et alii* 2005, 52–53; MOGA *et alii* 2006, 73; MOGA *et alii* 2007, 66. A few artefacts discovered in the settlement and the cemetery were included in an exhibition catalogue: GEPIZII 2011, 164–167, nos. 223–231. The combs from this site were published in a separate paper: BOUNEGRU/OTA 2006.

⁴⁵ The exceptions (e.g. Porolissum, Ulpia Traiana Sarmizegetusa, Micia) can be explained by geographical and topographical reasons.

⁴⁶ For a recent synthesis, with further bibliography, see NEMETI 2020.

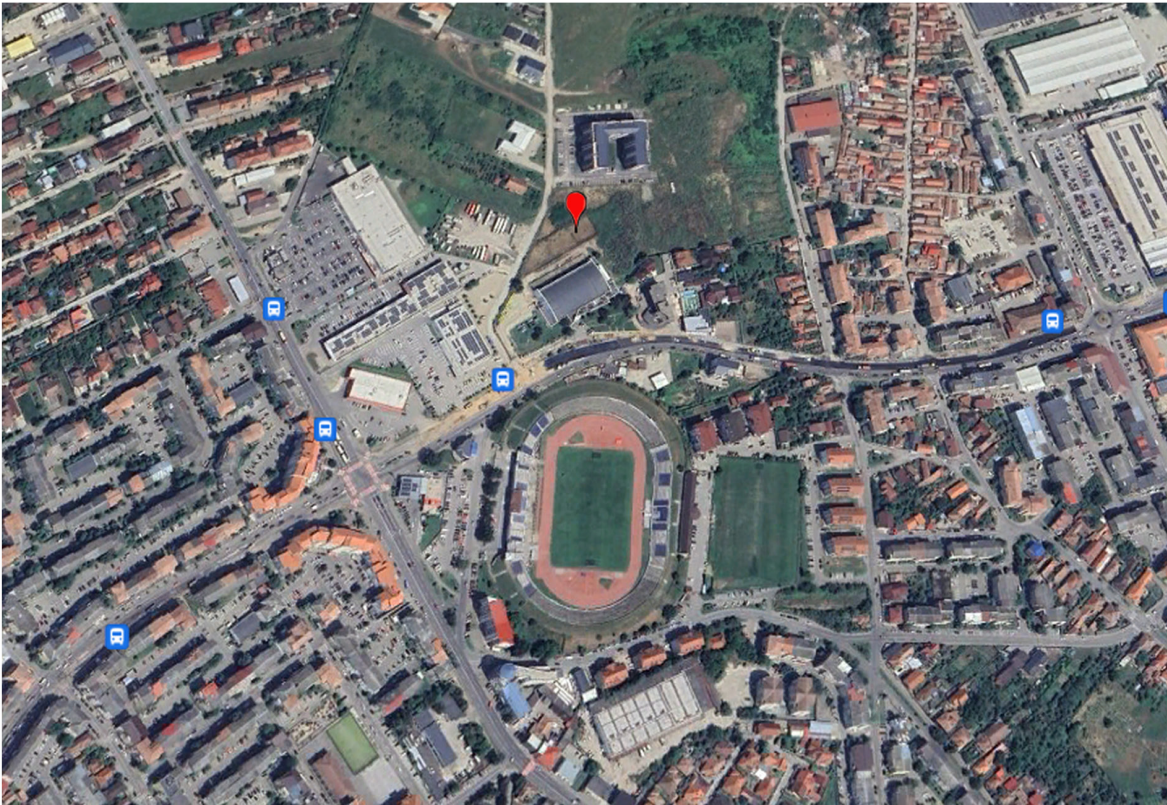
⁴⁷ BĂRBULESCU 2008; NEMETI 2008; NEMETI/BARBOCZ 2023.

REFERENCES

- ANGHEL/BLĂJAN 1974
Anghel, Gh./Blăjan, M., Sondajul de salvare de la Sîmniclăuș (jud. Alba), *Apulum* 12, 319–329.
- BALTEȘ *et alii* 2022
Balteș, G./Bolog, A./Trif, R., Un mormânt princiar din epoca migrațiilor, descoperit la Alba Iulia, *Apulum* 59, 231–252.
- BĂRBULESCU 2008
Bărbulescu, M., *Mormântul princiar germanic de la Turda / Das germanischen Fürstengrab von Turda* (Cluj-Napoca: Tribuna).
- BĂRCĂ 2015
Bărcă, V., *A few notes on the emergence and distribution in the Sarmatian environment of variously shaped ditched enclosures, with or without graves inside*. In: Kogălniceanu, R./Gligor, M./Curcă, R.-G./Stratton, S. (eds.), *Homines, Funera, Astra 2. The Archaeology of Death in Ancient Times (Romanian Case Studies). Proceedings of the International Symposium on Funerary Anthropology, 23-26 September 2012, 1 Decembrie 1918 University (Alba Iulia, Romania)* (Archaeopress: Oxford), 103–118.
- BĂRCĂ 2020
Bărcă, V., Funerary Ditched Enclosures in the Sarmatian Funerary Ritual. Observations Regarding Their Introduction, Distribution, Use, and Dating, *Ziridava Studia Archaeologica*, 34, 325–376.
- BĂRCĂ/COCIȘ 2013
Bărcă, V./Cociș, S., Sarmatian Graves Surrounded by Flat Circular Ditch Discovered at Nădlac (Arad County, Romania), *Ephemeris Napocensis* 23, 31–50.
- BĂRCĂ *et alii* 2023
Bărcă, V./Plantos, C./Bounegru, G. V./Melincianu, A., Preliminary data on the rescue archaeological excavations of Alba Iulia - Republicii Blvd. no. 3, *Journal of Ancient History and Archaeology* 10/3, 75–135. DOI: [10.14795/j.v10i3.924](https://doi.org/10.14795/j.v10i3.924).
- BĂRCĂ *et alii* 2024
Bărcă, V./Fântâneau, C./Matiș, A./Florescu, C., Aspects of the Funerary Rite and Ritual in the Sarmatian cemetery of Timișoara-Hladik 1 (Timiș County). Preliminary observations, *Journal of Ancient History and Archaeology* 11/4, 2024, 166–198. DOI: [10.14795/j.v11i4.1146](https://doi.org/10.14795/j.v11i4.1146).
- BĂRCĂ/SYMONENKO 2009
Bărcă, V./Symonenko, O., *Călăreții stepelor. Sarmatii în spațiul nord-pontic* (Cluj-Napoca: Mega).
- BĂRZU 1991
Bărză, L., Gepidische Funde von Bratei, *Dacia N.S.* 35, 211–214.
- BĂRZU 1994–1995
Bărză, L., La station n° 1 de Bratei, dép. de Sibiu (IV^e–VII^e siècles), *Dacia N.S.* 38–39, 239–295.
- BESZÉDES/SZILAS 2006
Beszédes, J./Szilas, G., Óskori és római kori lelőhelyek feltárása az M6 autópálya budapesti szakaszának nyomvonalán 2005-ben, *Aquincumi Füzetek* 12, 147–158.
- BESZÉDES/SZILAS 2007
Beszédes, J./Szilas, G., Ős- és római kori lelőhelyek feltárása az M6 autópálya nyomvonalán 2006-ban, *Aquincumi Füzetek* 13, 233–248.
- BÍRÓ 2000
Bíró, M., Qualitative Analyse der Wechselwirkung der provinziellen und barbarischen Beinwerkstätte aufgrund der spätantiken Kämme. In: Bouzek, J./Friesinger, H./Pieta, K./Komoróczy, B. (Hrsg.), *Gentes, Reges und Rom. Auseinandersetzung – Anerkennung – Anpassung. Festschrift für Jaroslav Tejral zum 65. Geburtstag*. Spisy Archeologického ústavu AV ČR Brno 16 (Brno: Archäologisches Institut der Akademie der Wissenschaften der Tschechischen Republik), 167–182.
- T. BÍRÓ 2002
T. Bíró, M., Combs and comb-making in Roman Pannonia: ethnical and historical aspects. In: Tejral, J. (Hrsg.), *Probleme der frühen Merowingerzeit im Mitteldonauraum*. Spisy Archeologického ústavu AV ČR Brno 19 (Brno: Archäologisches Institut der Akademie der Wissenschaften der Tschechischen Republik), 31–71.
- BOUNEGRU/OTA 2006
Bounegru, G./Ota, R., Piepteni de os din așezarea postromană de la Alba Iulia-Dealul Furcilor-Monolit, *Apulum* 43, 297–307.
- BOUNEGRU *et alii* 2023
Bounegru, G. V./Bărcă, B./Plantos, C./Tușuiianu, C. D./Melincianu, A., Alba Iulia, jud. Alba Punct: Bulevardul Republicii nr. 3. In: *Cronica Cercetărilor Arheologice din România, Campania 2022* (București-Dâmbovița: Institutul Național al Patrimoniului - Consiliul Județean Dâmbovița), 467–468.
- BÓNA 2002
Bóna, I., Szolnok-Szanda (Kom. Jász-Nagykun-Szolnok). In: Bóna, I./Nagy, M., *Gepidische Gräberfelder am Theissgebiet I. Monumenta Germanorum Archaeologica Hungariae 1* (Budapest: Magyar Nemzeti Múzeum), 197–237.
- BÓNA/NAGY 2002
Bóna, I./Nagy, M., Hódmezővásárhely-Kishomok (Kom. Csongrád). In: Bóna, I./Nagy, M., *Gepidische Gräberfelder am Theissgebiet I. Monumenta Germanorum Archaeologica Hungariae 1* (Budapest: Magyar Nemzeti Múzeum), 34–189.
- BÓNIS 1960
Bónis, É., Römerzeitliche Gräber in Halimba (Komitat Veszprém), *Folia Archaeologica* 12, 93–110.
- CSALLÁNY 1961
Csallány, D., *Archäologische Denkmäler der Gepiden im Mitteldonau Becken (454–568 u. Z.)*. Archaeologia Hungarica 38 (Budapest: Verlag der Ungarischen Akademie der Wissenschaften).
- DOBOS 2009
Dobos, A., Gepidic finds from Căpușu Mare (Cluj County), *Ephemeris Napocensis* 19, 219–242.
- DOBOS *et alii* 2021
Dobos, A./Gál, Sz. S./Kelemen, I./Neparáczi, E., 5th-century burials from Sângeorgiu de Mureș-Kerekdomb (Mureș County, Romania). In: Rácz, Zs./Szenthe, G. (eds.), *Attila's Europe? Structural transformation and strategies of success in the European Hun period* (Budapest: Hungarian National Museum, Eötvös Loránd University), 327–360.
- FERENCZ *et alii* 2009
Ferencz, Sz./Nagy, Sz./Lăzărescu, V.-A., Necropola din secolul al VI-lea / The sixth century A.D. necropolis. In: Mustață, S./Gogăltan, F./Cociș, S./Ursuțiu, A. (eds.), *Cercetări arheologice preventive la Florești-Polus Center, jud. Cluj (2007) / Rescue excavations at Florești-Polus Center, Cluj County (2007)*. Patrimonium Archaeologicum Transylvanicum 1 (Cluj-Napoca: Editura Mega), 419–474.

- GEPIZII 2011
Gaiu, C. (ed.), *Gepizii. Războinici și artizani. Catalog de expoziție* (Bistrița: Accent).
- GUDEA et alii 2024
Gudea, Al./Bârcă, V./Irimie, Al./Martonos, C./Socaciu, A., La Tène Horse Remains from Alba Iulia CX 143 Complex: A Whole Story to Tell, *Animals* 14 (11), 1624, 1-18. DOI: <https://doi.org/10.3390/ani14111624>.
- HAIMOVICI/BLĂJAN 1989
Haimovici, S./Blăjan, M., Studiul faunei din locuințele prefeudale (secolele V–VI e.n.) descoperite la Alba Iulia (1985, 1986, 1988), *Apulum* 26, 335–346.
- HARHOIU 2008
Harhoiu, R., Das gepidische Gräberfeld von Galații Bistriței, *Revista Bistriței* 22, 183–241.
- HEITEL 1985
Heitel, R. R., Principalele rezultate ale cercetărilor arheologice din zona sud-vestică a cetății de la Alba Iulia (1968–1977). I, *Studii și Cercetări de Istorie Veche și Arheologie* 36, 3, 215–231.
- HICA-CÎMPEANU 1978
Hica-Cîmpeanu, I., Un grup de morminte din secolul al VII-lea e.n. la Iclod (jud. Cluj), *Acta Musei Napocensis* 15, 287–294.
- HOREDT 1941
Horedt, K., Völkerwanderungszeitliche Funde aus Siebenbürgen, *Germania* 25, 121–126.
- HOREDT 1979
Horedt, K., *Morești. Grabungen in einer vor- und frühgeschichtlichen Siedlung in Siebenbürgen* (Bukarest: Kriterion).
- HOREDT 1982
Horedt, K., *Siebenbürgen in spätrömischer Zeit* (Bukarest: Kriterion).
- ILON 2015
Ilon, G. (ed.), *The Early and Late Roman Rural Cemetery at Nemesbőd (Vas County, Hungary)*, Archaeopress Roman Archaeology 5 (Oxford: Archaeopress).
- INEL/GLIGOR 2007
Inel, C./Gligor, M., Alba Iulia, jud. Alba [Apulum II]. Punct: Lumea Nouă – Centrul creștin P.I.E. In: *Cronica Cercetărilor Arheologice din România, Campania 2006* (București: CIMEC), 60.
- INEL et alii 2007
Inel, C./Lascu, I./Bounegru, G./Oargă, O., Alba Iulia, jud. Alba [Apulum II]. Punct: Parcul Unirii. In: *Cronica Cercetărilor Arheologice din România, Campania 2006* (București: CIMEC), 60–61.
- IVANIŠEVIĆ ET ALII 2006
Ivanišević, V./Kazanski, M./Mastykova, A., *Les nécropoles de Viminacium à l'époque des Grandes Migrations*. Collège de France – CNRS, Centre de Recherche d'Histoire et Civilisation de Byzance, Monographies 22 (Paris: Association des Amis du Centre d'Histoire et Civilisation de Byzance).
- KOVÁCS 1915
Kovács, I., A marosvásárhelyi őskori telep, skytha- és népvándorlaskori temető / Station préhistorique de Marosvásárhely; cimetière de l'époque scythe et de la migration des peuples, *Dolgozatok az Erdélyi Nemzeti Múzeum Érem- és Régiségtarából* 6, 1915, 226–325.
- KULCSÁR 1998
Kulcsár, V., *A kárpát-medencei szarmaták temetkezési szokásai* (Ászód: Osváth Gedeon Múzeumi Alapítvány).
- LĂZĂRESCU 2009
Lăzărescu, V.-A., Așezarea din secolul al VI-lea p. Chr. / The sixth-century A.D. settlement. In: Mustață, S./Gogâltan, F./Cociș, S./Ursuțiu, A. (eds.), *Cercetări arheologice preventive la Florești–Polus Center, jud. Cluj (2007) / Rescue excavations at Florești–Polus Center, Cluj County (2007)*. Patrimonium Archaeologicum Transylvanicum 1 (Cluj-Napoca: Editura Mega), 319–417.
- LĂZĂRESCU/OPREANU 2022
Lăzărescu, V.-A./Opreanu, C. H., Two ornamented antler objects from the settlement at Suceagu (Cluj County). In: Mustață, S./Lăzărescu, V.-A./Bârcă, V./Rusu-Bolindeț, V./Matei, D. (eds.), *FABER. Studies in Honour of Sorin Cociș at his 65th Anniversary*. Bibliotheca Ephemeris Napocensis 10 (Cluj-Napoca: Editura Mega), 415–426.
- MARCU et alii 2021
Marcu, F.-F./Csók, Zs./Cupcea, G. C./Dobos, A./Onofrei, C. G./Toda, O./Nyulas, D., Alba Iulia, jud. Alba [Palatul Principilor Transilvaniei]. Punct: str. Militari, nr. 4. In: *Cronica Cercetărilor Arheologice din România, Campania 2020* (București: Institutul Național al Patrimoniului, Universitatea „Lucian Blaga” din Sibiu, Centrul de Cercetare a Patrimoniului și Istoriei Socio-Culturale), 19–22.
- MASEK 2016
Masek, Zs., The transformation of Late Antique comb types on the frontier of the Roman and Germanic world. Early Medieval antler combs from Rákóczifalva (County Jász-Nagykun-Szolnok, Hungary), *Antaeus* 34, 105–172.
- MOGA 1998
Moga, V., *Castrul roman de la Apulum* (Cluj-Napoca: Casa Cărții de Știință).
- MOGA et alii 2005
Moga, V./Ciugudean, H./Ciobanu, R./Dragotă, A./Inel, C./Drâmbărean, M./Plantos, C./Lascu, I./Ota, R., Alba Iulia, jud. Alba. Punct: Societatea „Monolit”. In: *Cronica Cercetărilor Arheologice din România, Campania 2004* (București: CIMEC), 51–53.
- MOGA et alii 2006
Moga, V./Bounegru, G./Ciugudean, H./Ciobanu, R./Lascu, I./Ota, R./Plantos, C., Alba Iulia, jud. Alba. Punct: Dealul Furcilor-Monolit. In: *Cronica Cercetărilor Arheologice din România, Campania 2005* (București: CIMEC), 72–73.
- MOGA et alii 2007
Moga, V./Bounegru, G./Lascu, I./Ota, R./Plantos, C./Inel, C./Rustoiu, G./Oargă, O., Alba Iulia, jud. Alba. Punct: Dealul Furcilor-Monolit. In: *Cronica Cercetărilor Arheologice din România, Campania 2006* (București: CIMEC), 65–67.
- MRÁV 2010
Mráv, Z., Graves of auxiliary soldiers and veterans from the first century AD in the northern part of Pannonia. In: Sanader, M./Rendić-Miočević, A./Tončinić, D./Radman-Livaja, I. (eds.), *Proceedings of the XVIIth Roman Military Equipment Conference: Weapons and Military Equipment in a Funerary Context, XVII Roman Military Equipment Conference, Zagreb, 24th–27th May (Zagreb)*, 87–116.
- NEMETI 2008
Nemeti, S., Potaissa în secolele V–VI p. Chr. / Potaissa im 5.–6. Jh. n. Chr. In: Bărbulescu, M., *Mormântul princiar germanic de la Turda / Das germanischen Fürstengrab von Turda* (Cluj-Napoca: Tribuna), 328–385.
- NEMETI 2020
Nemeti, S., Le centre du pouvoir germanique de la région

- centrale de Transylvanie : les tombes princières d'Apahida à la lumière de découvertes locales récentes. In: Kazanski, M./Périn, P./Corrochano, A./Leroy, I./Young, B. K. (dir.), *Autour du règne de Clovis. Les grands dans l'Europe du Haut Moyen Âge. Histoire et archéologie*. Mémoires de l'Association française d'archéologie mérovingienne 31 (Caen: Association française d'archéologie mérovingienne), 306–319.
- NEMETI/BARBOCZ 2023
Nemeti, S./Barbocz, B., The 5th–6th century AD settlement from the fortress of *Legio V Macedonica* at Potaissa, *Acta Musei Napocensis* 60/I, 161–202.
- OPREANU/LĂZĂRESCU 2022
Opreanu, C. H./Lăzărescu, V.-A., Antler comb production in the settlement at Suceagu-Rădaia (Cluj County). A contribution to the study of the cultural contacts at the beginnings of the Migration Period, *Ephemeris Napcensis* 32, 95–134.
- OTA 2012
Ota, R., *De la canabele Legiunii a XIII-a Gemina la Municipium Septimium Apulense*, (Alba Iulia: Altip).
- OTTOMÁNYI 2001
Ottományi, K., „Hunkori” sírok a pátyi temetőben, *Archaeologiai Értesítő* 126, 35–74.
- PINTYE 2009
Pintye, G., A Kárpát-medencei szarmata települések csontfésűi, *Archaeologiai Értesítő* 134, 165–195.
- PLANTOS *et alii* 2024
Plantos, C./Bărcă, V./Bounegru, G. V./Melincianu, A., *Cercetări arheologice recente în necropola nordică de la Apulum. Observații preliminare*. In: Aparaschivei, D./Bilavski, G./Bacumenco-Pîrnău, L. (eds.), *Varia Archaeologica (IV). Provocări, căutări și certitudini în cercetarea arheologică românească actuală* (Cluj-Napoca), 207–254.
- POLUS 2008
Alicu, D. (coord.), *Polus. Istorie pierdută – istorie regăsită* (Cluj-Napoca: Muzeul Național de Istorie a Transilvaniei).
- POPA *et alii* 2004
Popa, C. I./Mihai, P./Bounegru, G., Raport asupra săpăturii de salvare de la Alba Iulia – B-dul Horea, nr. 22, *Patrimonium Apulense* 4, 207–216.
- PROTASE 2003
Protase, D., *Țaga. Două așezări din perioada finală a etnogenezei românilor (sec. VI–VI și sec. VII–VIII)* (Cluj-Napoca: Editura Nereamia Napocae).
- ȘANTIERUL 1952
Șantierul „Așezări slave în regiunile Mureș și Cluj”, *Studii și Cercetări de Istorie Veche* 3, 1952, 311–349.
- ȘOVAN 2009
Șovan, O. L., *Necropola de tip Sântana de Mureș – Černjachov de la Mihălășeni (jud. Botoșani)* (Târgoviște: Cetatea de Scaun).
- TĂNASE 2008
Tănase, D., Orizontul sec. V–VI. In: Marcu Istrate, D., *Catedrala romano-catolică „Sfântul Mihail” și Palatul Episcopal din Alba Iulia. Cercetări arheologice (2000–2002)* (Alba Iulia: Editura Altip), 71–76.
- B. TÓTH 2022
B. Tóth, Á., A „kacsás” meg a többi. Fésűk és használatuk a tiszaugi gepida temetőben. Előzetes: az első eredmények. In: Hága, T. K./Kolozsi, B./Nagy, E. Gy. (szerk.), *Sötét idők hétköznapjai*. Tempora Obscura 5 (Debrecen: Déri Múzeum).
- TÖRÖK 1961
Török, G., *Rómaikori faházak nyomai Halimbám*, in: *Folia Archaeologica*, 13, 63–71.
- TRIF/GLIGOR 2022
Trif, R./Gligor, M., Deformarea artificială a craniului în epoca migrațiilor. Studiu de caz: necropola gepidă de la Iclod (jud. Cluj). In: Gligor, M./Soficaru, A. (ed.), *Studierea și interpretarea practicilor funerare din trecut. O perspectivă bioarheologică* (Cluj-Napoca: Mega), 127–147.
- UBL 1974
Ubl, H., Das römerzeitliche Gräberfeld un die zugehörige Siedlung von Mannersdorf a. Leithagebirge, Flur Hausfelder am Arbach. In: *Actes du IX Congrès International d'Études sur les Frontières Romaines 1972 (1974)* (Mamaia), 413–426.

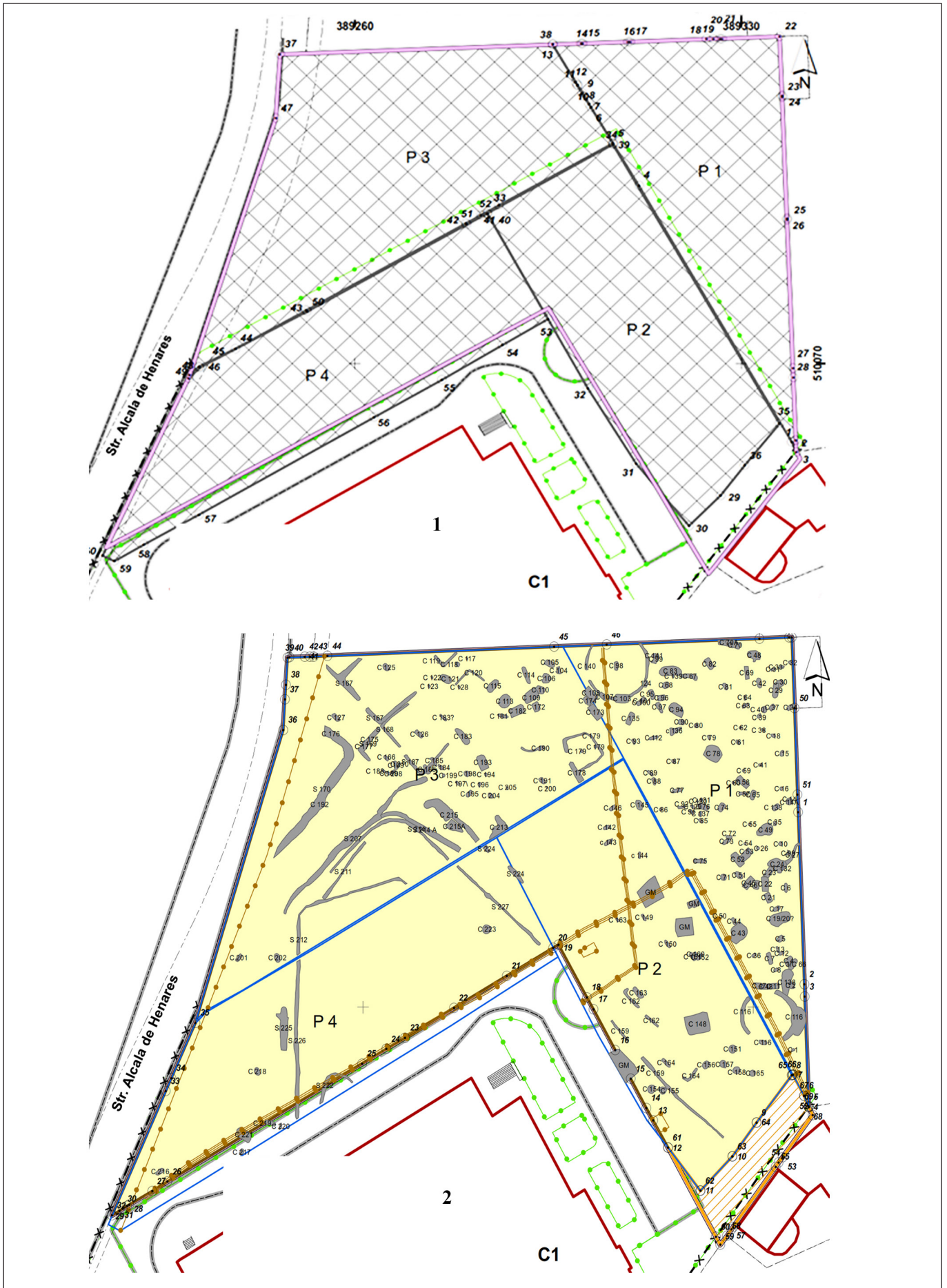


1



2

Pl. 1. Area layout plan (1) and aerial photo of the excavated perimeter (2) (after BÂRCĂ *et alii* 2023).



Pl. 2. Site plan of the excavated perimeter with the investigated areas/perimeters (1) and layout of features (2).



1



2

Pl. 3. Aerial photo of area 1 (1) and area 2 (2) (after BĂRCĂ *et alii* 2023).

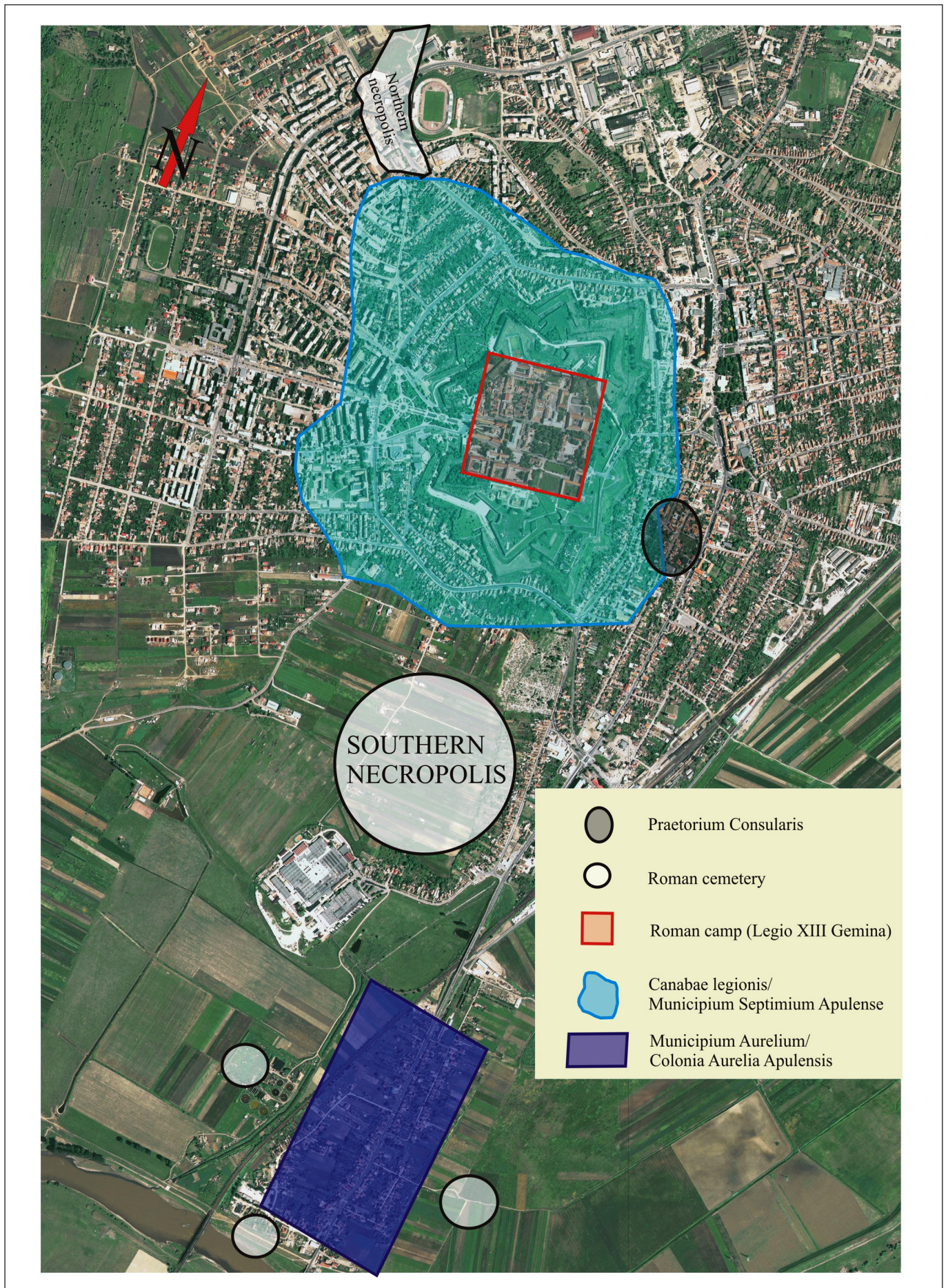


1

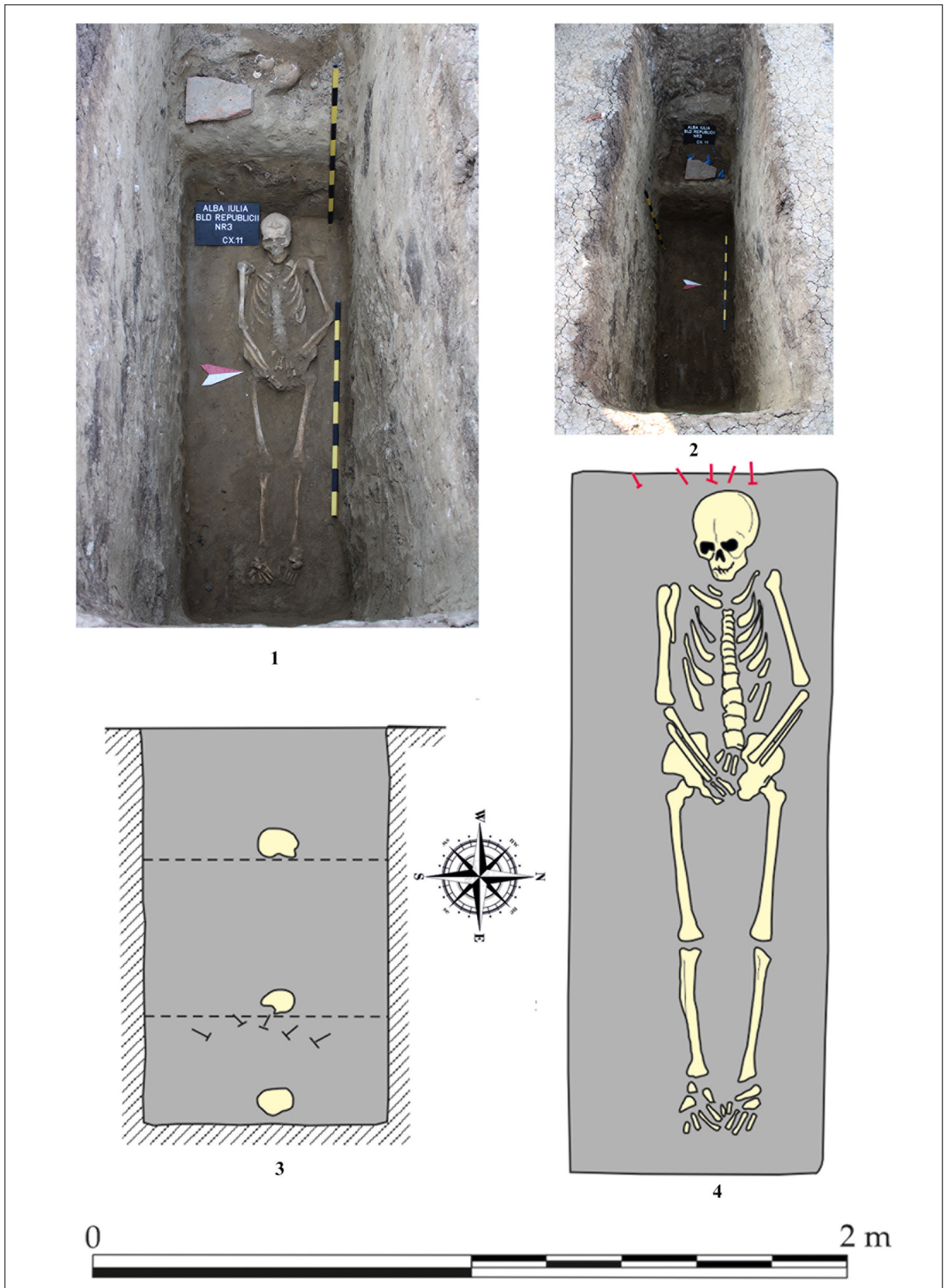


2

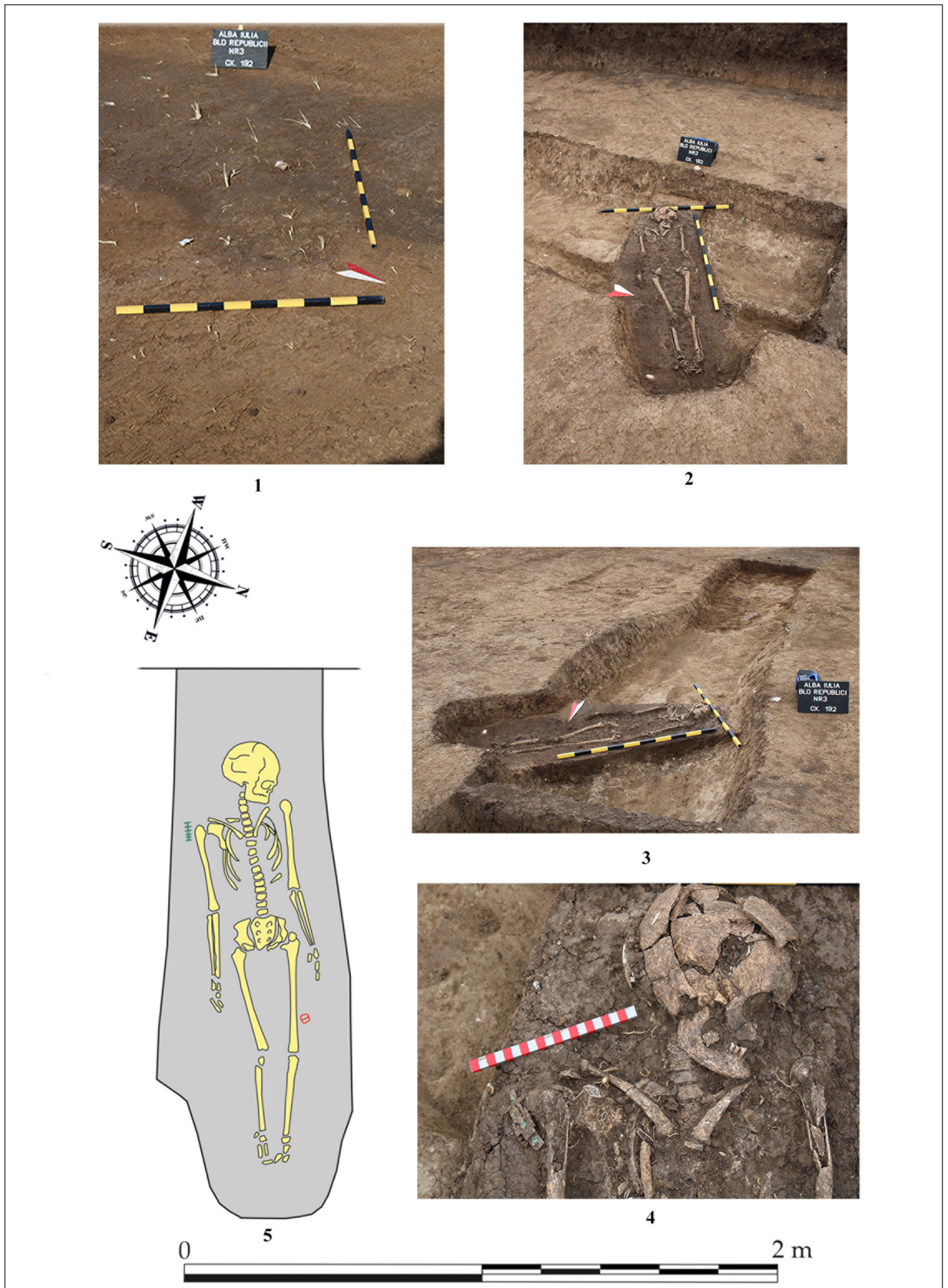
Pl. 4. Aerial photo of area 3 (1) and area 4 (2) (after BÂRCĂ *et alii* 2023).



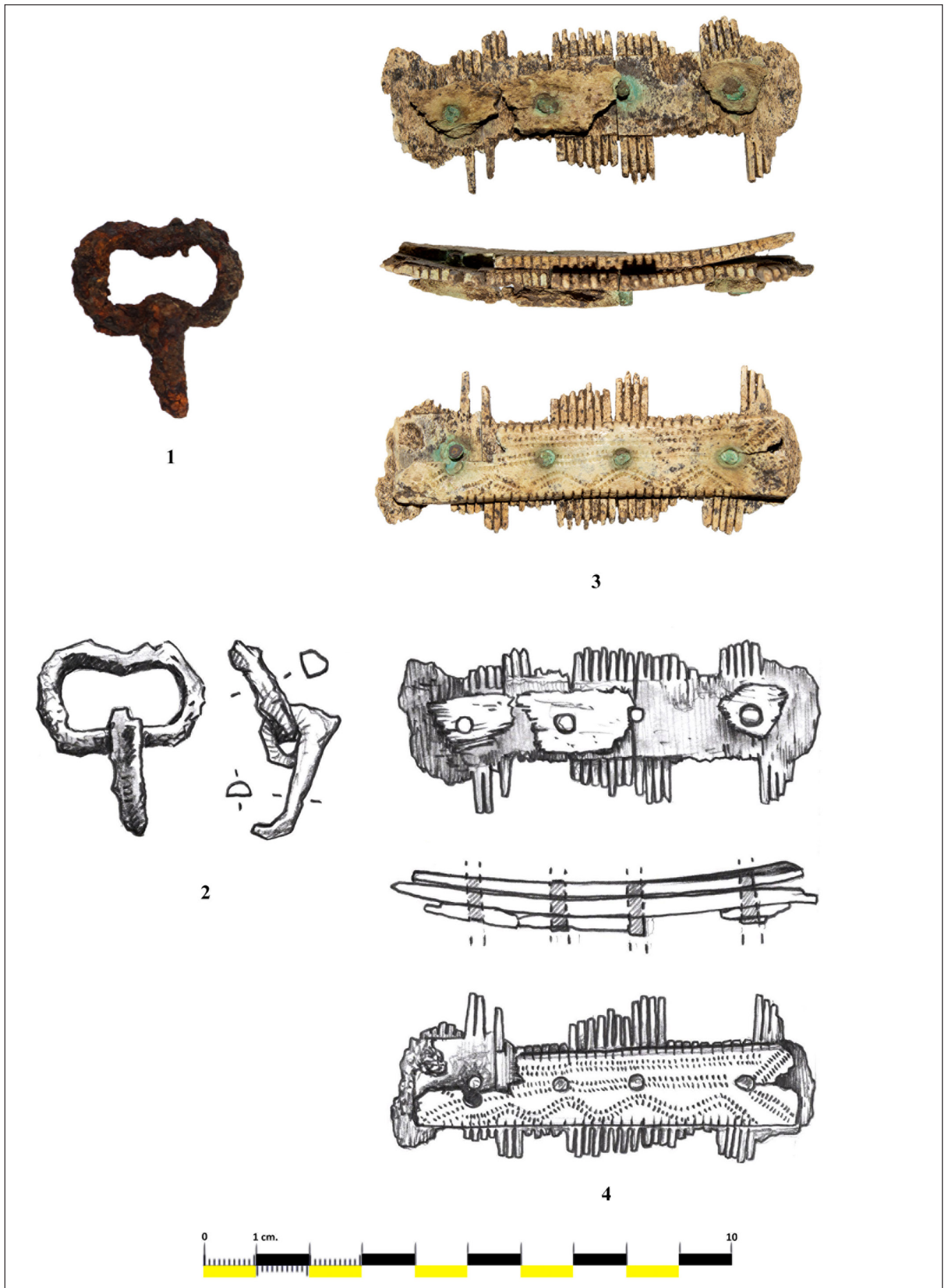
Pl. 5. Location of the northern cemetery in relation with the remaining sites of Apulum (after BÂRCĂ *et alii* 2023).



Pl. 6. Grave no. 1 (Feature 11).



Pl. 7. Grave no. 1 (Feature 125).



Pl. 8. Buckle iron (1-2) and bone comb (3-4) from grave no. 2 (Feature 192).