



INSTITUTE OF ARCHEOLOGY  
AND ART HISTORY OF ROMANIAN  
ACADEMY CLUJ-NAPOCA



UNIVERSITATEA TEHNICĂ  
DIN CLUJ-NAPOCA

JAHA  
JOURNAL OF ANCIENT HISTORY  
AND ARCHAEOLOGY

editura  
MEGA

---

# Journal of Ancient History and Archaeology



Scopus®



Clarivate  
Analytics



Central and Eastern European Online Library

EBSCO



Google  
scholar

ERIH PLUS  
EUROPEAN REFERENCE INDEX FOR THE  
HUMANITIES AND SOCIAL SCIENCES

DOAJ  
DIRECTORY OF  
OPEN ACCESS  
JOURNALS

No. 11-3 / 2024

# CONTENTS

## STUDIES

### ANCIENT HISTORY

#### Vasileios SPANOS

HISTORICAL REFERENCE POINTS OF ANCIENT LARISSA.....3

#### Lucrețiu MIHAILESCU-BÎRLIBA

THE MOBILITY VECTORS OF SOLDIERS RECRUITED FROM THE RURAL MILIEU IN MOESIA INFERIOR. I. THE INSCRIPTIONS FROM CLAUDIUS TO TITUS.....10

#### Lev Shir COSIJNS

AM I MY CHILDREN'S KEEPER? EVIDENCE FOR INFANTICIDE IN THE ROMAN EMPIRE.....23

#### Raúl GONZÁLEZ-SALINERO

JEWISH EXEMPTIONS FROM ROMAN MILITARY SERVICE: A REPLY.....40

#### Noé CONEJO

THE MATERIALIZATION OF IDENTITY: ARCHITECTURE AND CONSUMPTION IN THE LATE ROMAN VILLAS OF LUSITANIA....45

### ARCHAEOLOGY

#### Harun OY

AN IMPORTANT SETTLEMENT RELATED TO YORTAN CULTURE IN CENTRAL WEST ANATOLIA: KIZILKABAĞAÇ, EŞME, UŞAK... 57

#### Gayane POGHOSYAN

RITUAL SCENES IN THE ARTISTIC DECORATION OF THE URARTIAN BRONZE HELMETS.....73

#### Arturo SANCHEZ SANZ

GRYPHOMACHIAS. AMAZONS AND GRYPES IN ANCIENT ART.....77

### ARCHAEOLOGICAL MATERIAL

#### Stefanos SPANOS

THE MYCENAEAN POTTERY OF THE TEMPLE-TEMENOS AREA FROM KOUKOUNARIES (PAROS) AND THE CONNECTIONS

WITH THE OTHER CYCLADIC ISLANDS, LEFKANDI AND THE ARGOLID.....87

#### Ramaz SHENGELIA, Levan GORDEZIANI, Nikoloz TUSHABRAMISHVILI, Nodar POPORADZE, Othar ZOURABICHVILI

DISCOVERY OF UNKNOWN SCRIPT SIGNS IN GEORGIA: THE BASHPLEMI LAKE TABLET.....96

#### Derviş Ozan Tozluca

WHEEL-MADE TERRACOTTA AND HOLLOW BULL FIGURINES FROM THE KNIDOS TERRITORY.....114

#### Dávid Petruț, Sorin COCIȘ

DOMESTIC LIGHTING IN ROMAN NAPOCA. THE LAMPS DISCOVERED ON THE SITE AT V. DELEU STREET (CLUJ-NAPOCA, ROMANIA).....131

#### Sever-Petru BOȚAN, Vitalie BÂRCĂ, Sorin COCIȘ

NOTES ON SOME OF THE GLASS FINDS IN THE VILLA RUSTICA OF DEALUL LOMB – CLUJ-NAPOCA.....161

#### Vladyslav SHCHEPACHENKO

ROMAN GLASSWARE FROM THE AREA OF THE CHERNIAKHIV/SÂNTANA DE MUREȘ CULTURE: TYPOLOGY, CHRONOLOGY AND DISTRIBUTION.....172

#### Deniz Berk TOKBUDAK

A LAMP-BEARER (?) IN THE FORM OF DIONYSUS FROM ANATOLIAN CIVILIZATIONS MUSEUM.....214

### NUMISMATICS

#### Nathaniel S. KATZ

THE LEGIONARY COINS OF SEPTIMIUS SEVERUS.....222

ISSN 2360 266x  
ISSN-L 2360 266x

Design & layout: Francisc Baja



EDITURA MEGA | www.edituramega.ro  
e-mail: mega@edituramega.ro

## AN IMPORTANT SETTLEMENT RELATED TO YORTAN CULTURE IN CENTRAL WEST ANATOLIA: KIZILKABAAĞAÇ, EŞME, UŞAK

**Abstract:** Kızilkabaağaç settlement was discovered in Eşme district in 2020 during the EBA surveys conducted in Uşak province in Innerwest Anatolia. This settlement, which was re-examined in 2021, is dated to the EBA 1–2 period and is related to the Yortan culture. The Yortan culture is only known for its cemetery finds and its dark-faced wares includes incision, groove and white paint decorations that attract attention. It is known that this culture spread in Manisa and Balıkesir regions during the EBA. The discovery of a Yortan type jug in Kızilkabaağaç is important in terms of showing the connection of the Uşak region with the Yortan culture. Besides, many painted bowls were found. Bowls that limited in Yortan are plenty in here. Samples belong to the other forms are also given in this article. Kızilkabaağaç settlement is an important settlement showing that Yortan culture has expanded towards the Uşak region. This settlement which is thought to be related to Beycesultan as well as Yortan Culture is in a region where these two cultures intersect. The studies to be conducted here will contribute to the understand these cultures.

**Keywords:** *Uşak, Yortan Culture, West Anatolia, Early Bronze Age, Pottery.*

**Harun OY**

Ordu University, Turkey  
harunoy@odu.edu.tr

---

DOI: 10.14795/j.v1i13.1037

ISSN 2360 – 266X

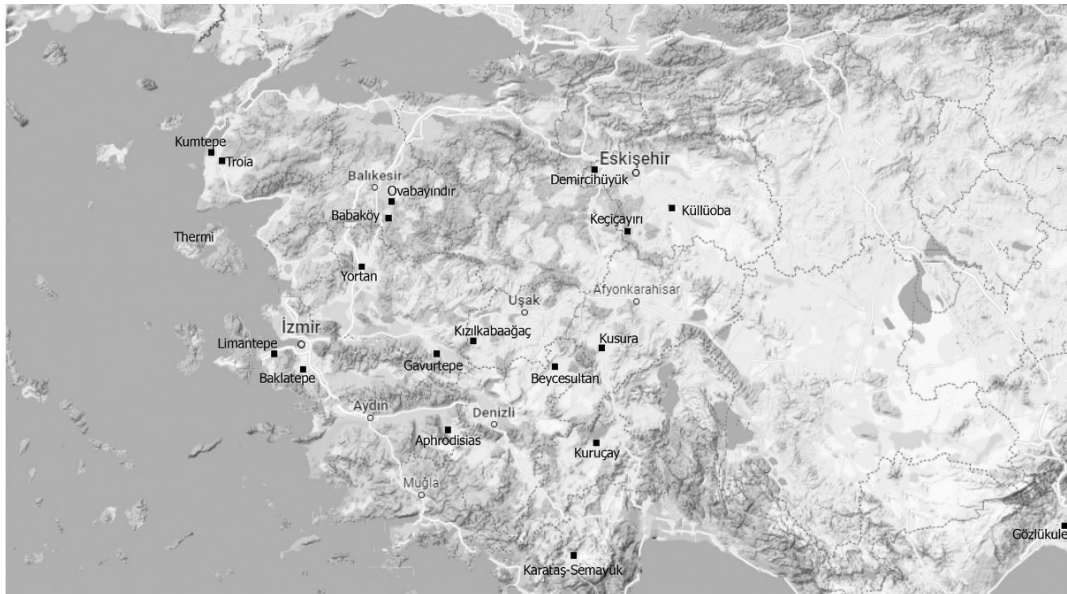
ISSN–L 2360 – 266X

### INTRODUCTION

No excavation belonging to the prehistoric period work has been carried out in the province of Uşak until today. Significant archeologic excavations have been carried out in the surrounding areas. Due to the lack of prehistoric studies in the province of Uşak, Early Bronze Age (EBA) researches were carried out by a team between 2013–2021 with the permission of the Ministry of Culture and Tourism, General Directorate of Cultural Heritage and Museums.

As a result of its geographical location, Uşak Province is at a point that connects Western Anatolia and Central Anatolia. The province of Uşak has a very important location due to its connection to the Gediz River (Hermus) and the Büyük Menderes River (Maeander) which are among the major natural routes of Western Anatolia. The province of Uşak was culturally close to the Troy and Beycesultan cultural region in Western Anatolia during the EBA (3000 BC) (Fig. 1).

During the Early Bronze Age research, we carried out in Uşak province in 2020–2021, the Kızilkabaağaç settlement spotted within the boundaries of Yelegen town in Eşme district was uncovered. Kızilkabaağaç settlement is in Eşme district, 55km southwest of Uşak. During our studies at this settlement, some of our finds that we think related to the Yortan culture led us to conduct research in this settlement again in 2021. As a result of these



**Fig. 1.** Western Anatolian EBA settlements.

studies, in addition to the presence of finds related to the Yortan culture, many EBA white painted bowls and various sherds were also found in the settlement. For this reason, Kızılkaabağaç settlement provides important data in terms of showing the spread of Yortan culture, contributes to this culture.

Archaeological culture is a concept created based on material cultural remains such as architecture, pottery and objects belonging to a specific human community who lived in a certain period and place. The goods that societies have made and the tools they use helped to recognize and understand the past. For this reason, evaluations of prehistoric periods are mostly made on material, cultural, archaeological remains. The unearthed materials in the excavations are mostly pottery; and their distribution areas, differences and similarities help to determine cultural relations. The pottery in the EBA in Western Anatolia differed by showing local characteristics, and this has been put forward by various researchers. The regions where local pottery with these different characteristics are determined, are defined as cultural regions. Starting from the 1940s, researchers such as K. Bittel, A. Goetze, J. Mellaart, D. H. French and T. Efe revealed the existence of cultural regions consisting of different pottery groups in Western Anatolia<sup>1</sup>. The development of cultural regions formed by similar pottery groups in the EBA is defined according to pottery, and thus various cultural regions are mentioned. Among these cultural regions, there is also Yortan culture with its unique characteristic.

The Late Chalcolithic Age is defined by black burnished and white painted pottery in Western Anatolia. During the Late Chalcolithic Age, layers belonging to this period were unearthed from Beycesultan and Aphrodisias, two settlements in Central West Anatolia, but it is difficult to find detailed information since it has been studied in a limited area. The black burnished pottery existing in the transition phase to the EBA (3200–3000 BC) will be replaced by

red slipped and burnished wares in the future. During EBA 1 (3000–2700 BC), there are cultural regions such as Troia I-Yortan, Phrygia-Bithynia (Demircihüyük), Beycesultan EBA 1 and Lycia-Pisidia cultural regions in Western Anatolia<sup>2</sup>. The Uşak region and Kızılkaabağaç settlement are especially located in the region between the Troia I-Yortan region and the Beycesultan EBA 1 region. And it is a settlement associated with these regions. Dark faced and black burnished pottery is characteristic in the Troia I-Yortan cultural region. Yortan pottery region can be evaluated as Akhisar-Manisa group and Balıkesir group<sup>3</sup>. Kızılkaabağaç settlement is geographically bordered with the Manisa region.

Yortan culture is known for the dark-faced pottery unearthed by P. Gaudin as a result of the excavations carried out in the Yortan cemetery located in the present Akhisar-Gelembe plain. It was named “Yortan Culture” due to the same type of cemeteries and finds such as Babaköy and Ovabayındır, which were later discovered in the nearby region. Yortan Culture dated to EBA 1–3 is contemporary of Troy I and II layers<sup>4</sup>.

The first excavations in Yortan were made at the beginning of 1900<sup>5</sup>. More than 100 pithoi tombs were unearthed during the excavations by P. Gaudin. It was determined from the finds that it was an EBA Cemetery. This type of pithos graves is found in large numbers in Western Anatolia with similar features. However, the striking point is that due to the originality of the Yortan cemetery finds, they are called Yortan culture. In Yortan, there are not only potteries, but also metal artefacts, idols, and spindle whorls.

The main spreading area of Yortan culture is Balıkesir, Manisa and Akhisar regions. Since no excavation has been carried out to define this culture, it is very difficult to define this culture with only the cemetery finds and the results obtained from the surface surveys. T. Kamil identified three main pottery groups for Yortan: A, B and C. T. Kamil dated

<sup>2</sup> EFE 2003, 89.

<sup>3</sup> FRENCH 1969, 41–98.

<sup>4</sup> KAMIL 1982, 52.

<sup>5</sup> COLLIGNON 1901, 810.

<sup>1</sup> BITTEL 1942, 186; GOETZE 1957, 129; LLOYD/ELLAART 1962, 138; FRENCH 1969; EFE 1988, 89; SARI 2012, 112–249.

the Group A wares to EBA 1 and EBA 2; therefore, he could not distinguish the pottery of these two periods with certain lines. When the Yortan culture is described, the most known jugs come to mind. The bowls are comparatively less. It was studied by T. Kamil in three groups in order of date. Group A vessels are all handmade; they are burnished black and gray. As decoration, there is a matte white decoration or a line decoration filled with a white paste. The characteristic white paint decoration is also one of the important features that characterize the Yortan Culture. The form is dominated by bowls and pots. Group B was made more carefully than group A. It is burnished in grey, red and brown. Sometimes a thin slip is seen on the pots. Deep groove decoration is seen as decoration. Group C vessels are wheel made. Dark colours have completely disappeared. There are no C group wares in Kızılkabaağaç.

In the Troia I-Yortan cultural region, Troia is open to actions from the sea and interacts with the coastal areas. However, since the Yortan cultural region is located in the inner region, it was not affected by this situation. Yortan originally existed in the EBA, and it developed originally<sup>6</sup>.

The location of the Yortan cemetery is known. However, the settlement area of this cemetery has not been determined. Although some settlements were identified during the research in the Gelembek and Karakurt plains, the settlement area of those using the Yortan cemetery is uncertain<sup>7</sup>. More than 100 tombs were unearthed in the Yortan cemetery, which was excavated by Paul Gaudin in 1900. Gaudin did not publish the results of this excavation entirely. Since there is no detailed report, the information is limited and incomplete. The chronological status of the Yortan cemetery and the settlement area belonging to this cemetery could not be found. Later, with the excavation of the Babaköy cemetery in 1936, similar finds belonging to the Yortan culture were found<sup>8</sup>. The main problem here is that definitions are made by focusing on the finds unearthed in the excavations of P. Gaudin and by considering the artefacts in various museums around the world where similar examples are scattered, and Yortan culture is expressed in this way. However, the fact that there are only cemetery finds and definitions with similar examples make it difficult to understand the Yortan culture and to determine the boundaries of this culture. The main deficiency is that a settlement belonging to this culture has not been excavated.

Many burial gifts, vessels and various materials belonging to the Yortan culture are in different museums of the World<sup>9</sup>. This culture is known from cemeteries such as Akhisar-Yortan, Balıkesir-Babaköy<sup>10</sup>. These pottery, which were distributed to world museums, must have come not only from Yortan, but also from the surrounding regions, especially the Balıkesir and Manisa regions. Generally, finds belonging to this culture come from cemeteries. The main problem is that the typology of Yortan type pottery, which has been defined only by cemetery finds, has remained limited and there are

problems in dating this pottery stratigraphically because no excavations have been carried out in any settlement related to the Yortan culture.

## KIZILKABAAĞAÇ SETTLEMENT

Kızılkabaağaç settlement is within the boundaries of Yelegen town of Eşme district in Uşak province. It is located 7km southwest of Eşme district. The settlement is in Kızılkabaağaç locality, 3.5–4km north of Yelegen town. It is also 3km west of the Eşme-Alaşehir highway (Fig. 2). Although it is mentioned as Kızılkabaağaç in the official land registry records, this region is called Oklu Mezar (tomb with arrow) by the local people. The settlement is in the area where the field and house of a citizen named Hasan Cida in Kızılkabaağaç area is located. This house is now abandoned and on the verge of demolition. The area where the settlement is located is cultivated with tobacco and used as an agricultural area (Fig. 3).

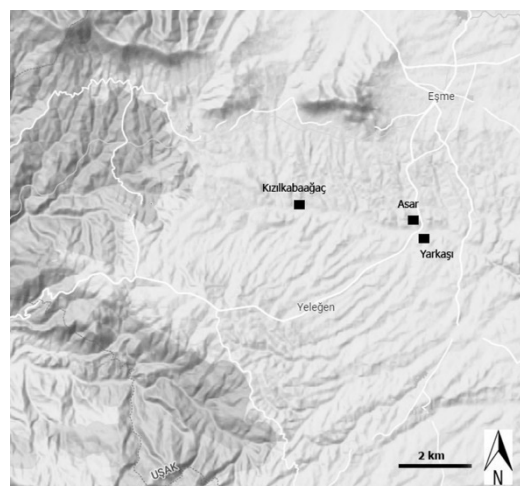


Fig. 2. Kızılkabaağaç and Eşme region.

This house and its surroundings are completely built on prehistoric settlements. There are dense prehistoric sherds on the south and east sides of the house, especially since the field is plowed. It is an important EBA settlement that discovered during our work in 2020. Kızılkabaağaç settlement is north of Çataltepe, west of Oklumezar, and south of Cennet Çukuru. Prehistoric sherds (EBA 1–2) are concentrated in an area of 100m in diameter in the area where the house is located. But there is a wider spread. Especially Roman period ceramics are scattered over a much wider area. Although the settlement height is not visible since it is on the field, its height is about 15m from the sloping area on the east side.

A stream flows from the northeast and south of Kızılkabaağaç settlement. There is no water problem and the area is in a wetland. This was a mound-type settlement, but it lost its appearance when the house was built and the field was plowed. The settlement is located at an altitude of 708m (Fig. 4).

There are intense EBA 1–2 sherds in the settlement. The EBA wares are heavily gray-black slipped and have good quality. In addition to bowls, pots, tripods, there are also many decorated sherds. There are also decorated and undecorated pedestals. There is also a large piece of pithos and there are

<sup>6</sup> MELLAART 1958, 30.

<sup>7</sup> AKDENİZ 2009, 52–55.

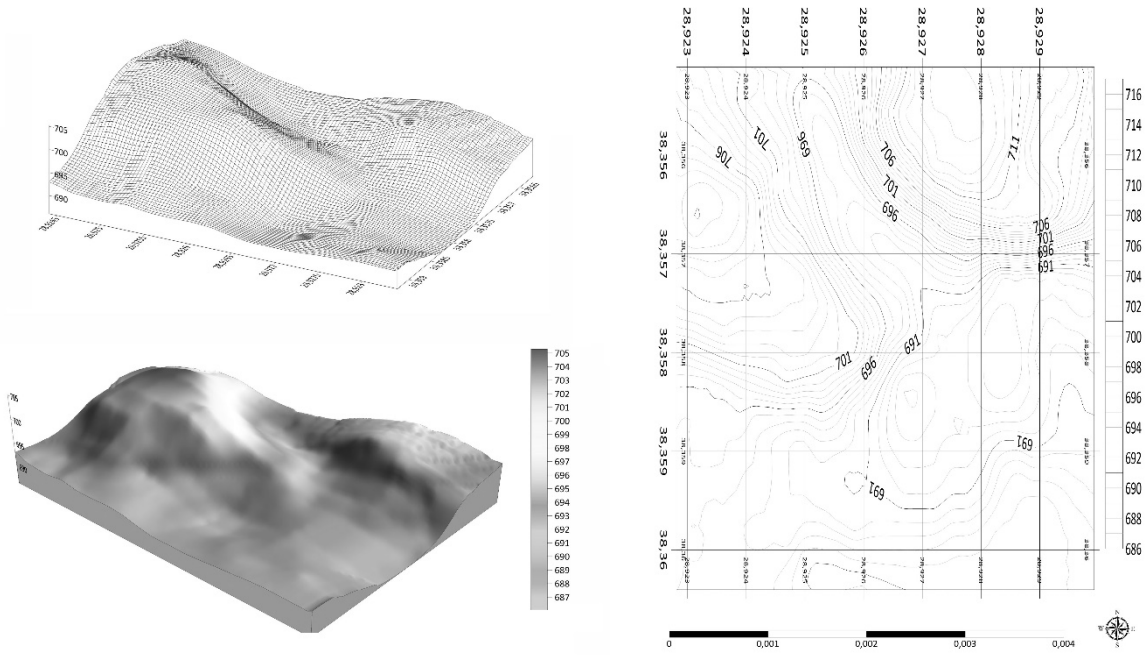
<sup>8</sup> KAMIL 1982, 1.

<sup>9</sup> HUTCHINSON 1935, 211–222; ORTHMAN 1966, 1–26; HÖCKMANN 1984, 97–136; WOLFGANG 1990, 479–487; HÜRYILMAZ 1997, 499–518.

<sup>10</sup> BITTEL 1939–1941, 1–12.



**Fig. 3.** Kızılkabağaç settlement.



**Fig. 4.** Kızılkabağaç plan.

many examples with twisted handles, horseshoe handles and groove decorations. It is noteworthy that the gray-black slipped wares are numerous.

In addition, a terracotta jug found in this settlement during our research in 2021 was delivered to the Uşak Museum. This jug consists of many broken pieces, most of which are missing, but can be completed with restoration. There are deficiencies in the body and bottom part, and the handle and neck part are broken. It resembles typical Yortan jugs with its zigzag motifs and black colour (Fig. 5).

Yelegen town, where the settlement is located, is in 10km southwest of Eşme. Yelegen is the only town in Eşme and has more population than the other villages in the district. Its land is wide and rich in water. This town has an important place in the agricultural production of vegetables and fruits in Eşme and Uşak province. Its very fertile soils are suitable for all kinds of agriculture.

Eşme district, where Kızılkabağaç settlement is located, is in the west of Uşak province and have a border with Manisa. The south of the district has a border with Denizli.

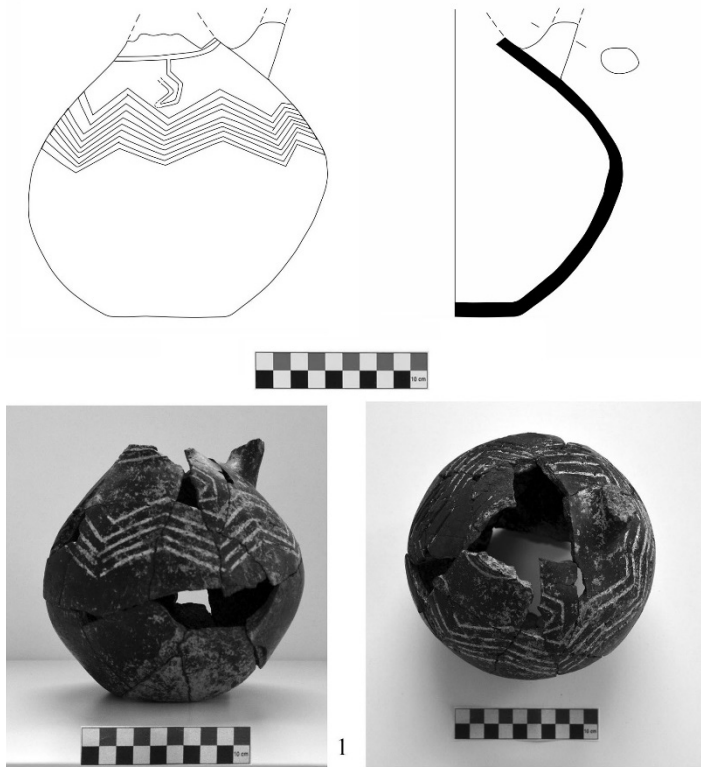


Fig. 5. Jug.

This geography is associated with the Büyük Menderes valley and is connected with Western Anatolia. Eşme is at an average altitude of 800–850 m. There are some mountain cones in Eşme district. Ahmetler Mountain, located to the east of Eşme, is a volcanic mass<sup>11</sup>. In addition, there are volcanic structures such as Beydağı volcanics around the district and the region is covered with alluvial fillings<sup>12</sup>. Between these mountain cones, there are plateaus that are slightly torn by flood-characterized streams. There are various volcanic lands and sedimentary structures that can be defined within this framework in the Eşme region<sup>13</sup>. The region is geologically related to the Menderes Massif in Western Anatolia and is evaluated within the Palaeozoic Eşme Formation<sup>14</sup>.

Except for the areas around Ahmetler Mountain (Beydağı) in the east of Eşme, Kemer Mountain in the district center and the Manisa border in the west, the region generally has a plateau feature. Especially the center of the district and the surroundings of Yelegen in the south consist of plateau areas. The western parts of the district, the regions separated by the province of Manisa, Umurbaba Mountain (1554 m) and its surroundings are mountainous and rugged. Likewise, the southwestern parts are rugged and mountainous. Many small streams in the northern part of the district flow into the Gediz River. Other rivers, especially Eşme stream, which is located in the south of the district, flow towards the south and reach Adıgüzel Dam and Büyük Menderes River. Kızılkabaağaç settlement is located in such a geography at the beginning of Eşme stream.

<sup>11</sup> YALÇINLAR 1955, 58; KARAOĞLU/HELVACI 2012, 3–4.

<sup>12</sup> KAHYA/KANAAT 2018, 12–15.

<sup>13</sup> ERCAN *et alii* 1978, 97–98.

<sup>14</sup> ERCAN 1982, 80.

Among the EBA settlements located in the south of Eşme district, Kızılkabaağaç settlement is located in the far west of the district. In the area where the settlement is located, there are two more EBA settlements in the town of Yelegen. These are Asar and Yarkaşı Höyük located 3km east of Kızılkabaağaç. These two settlements were also located on the banks of Eşme Stream (Kocadere). Among these settlements located on an east-west direction, the earliest finds are in Kızılkabaağaç. Yarkaşı Höyük and Asar settlements are opposite to each other. One is in the south of the stream and the other is in the north. There is a distance of 700m between Yarkaşı and Asar. Dark-faced wares dated to EBA 1–2 are dense at Kızılkabaağaç, while brown and red wares dated to EBA 1–2 are predominant in Yarkaşı mound. Asar settlement is one of the largest mounds in the region and is located on a large hill (1.5ha). Middle Bronze Age (MBA) and Late Bronze Age (LBA) sherds are dense in Asar. Among these three settlements that are close to each other, the existence of MBA sherds only in Asar can be explained by the concentration of the population in the more sheltered Asar settlement. We can show this as political changes, commercial factors and security problems. In addition, the current Eşme–Alaşehir highway passes right by the coast of Asar. Maybe this place has grown because it is on trade routes. It is also in a sheltered position and strategically located on a high hill.

There are no MBA and LBA sherds in Kızılkabaağaç and Yarkaşı mounds. Kızılkabaağaç was abandoned at the end of EBA. This is likely due to political reasons or security reasons. The settlement of Asar is a flat area on the top of the hill, measuring 1.5 hectares. The area covered by the whole hill is more than 8 hectares. The Eşme–Alaşehir highway passes through its eastern skirt. Yarkaşı mound is 2 hectares. The pithos cemetery is in the west. Kızılkabaağaç spread over an area of 1 hectare during the EBA period. Among these three settlements, Kızılkabaağaç is an earlier settlement than the others, and perhaps the population increased here and they moved to Yarkaşı mound. Then, for security reasons, they left these places and gathered in Asar. The number of EBA settlements in the region was already decreasing in MBA and on the other hand, the size of the settlements in MBA was increasing<sup>15</sup>.

Considering the size of Kızılkabaağaç, it is not a very large settlement and is more like a small village. It has nothing to do with urbanization. This place is earlier than the other two settlements and must be a village type settlement belonging to the EBA 1–2 period. Perhaps this place has been inhabited since the Late Chalcolithic Age (LCA). Since it is in a region rich in water resources and in a suitable geography in terms of agricultural production and animal husbandry. In this region, which also offers opportunities in terms of natural resources, plant diversity is also at the forefront.

## POTTERY

Kızılkabaağaç sherds generally consist of gray and black ware groups. Especially the bowls are dominated by gray and black colours. The pastes of these ware groups are generally

<sup>15</sup> OY 2018, 126.

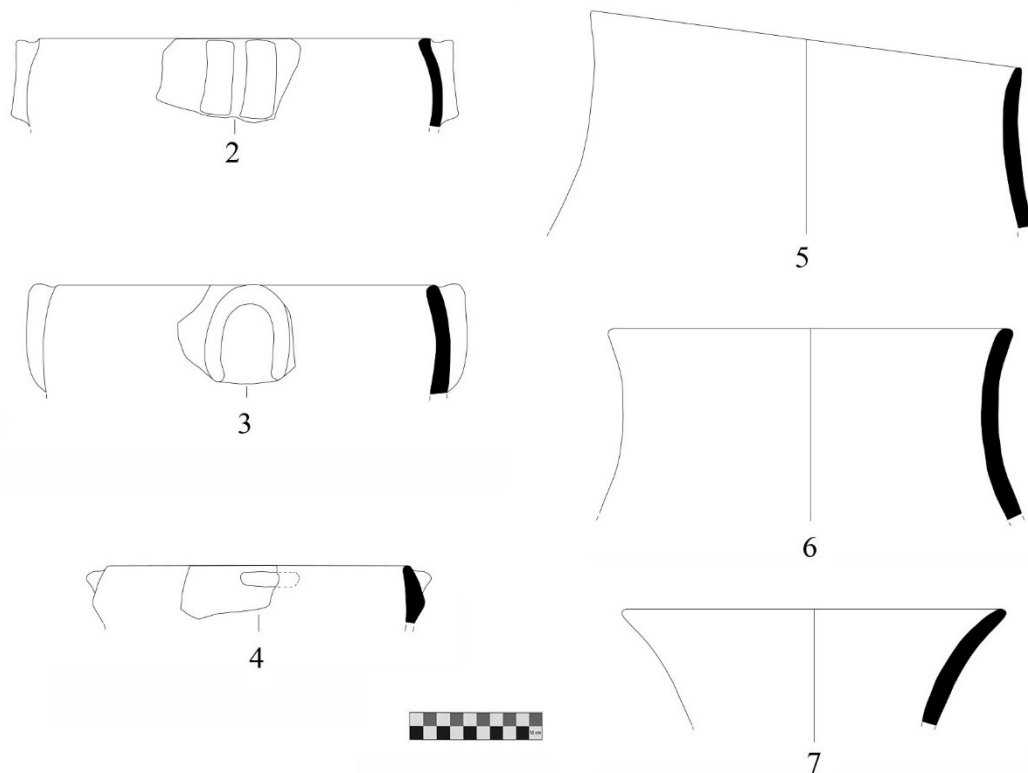


Fig. 6. Jars.

gray and black. An example belonging to the jug form is black slipped and black paste (Fig. 5). Likewise, a bowl with relief and handle has black slip and black paste (Fig. 8). Apart from these, there are various examples of brown and red colour in Kızılkabağaç. The ware groups are predominantly gray and black. Some of the bowls have a red surface, and some of the feet have a red surface. But the main ware groups are gray and black wares. There are mostly mica/mineral additives in pastes. The paste of the black burnished ware groups is well refined. Apart from mica additive, it can be seen in less amount of plant additives, lime and fine grit additives.

EBA 1–2 pottery of Kızılkabağaç settlement includes a jug (Fig. 5), jars (Fig. 6), bowls (Fig. 7–8), a triple composite vessel (Fig. 9) and a lid form (Fig. 10). Among these forms, the prominent and large majority consist of bowl forms. The bowls are numerous and represented by paint decorated samples on their outer surfaces (Fig. 7). There is also an example of a bowl with a handle and relief decoration (Fig. 8). Apart from these forms, various examples of low and high pedestals are also numerous (Fig. 11). Some of the pedestals are decorated with grooves. In addition, there are various legs and there are also plain ones as well as grooved ones (Fig. 11). Handles are represented by examples of vertical handles. In addition to grooves on the handles, there are also twisted handles (Fig. 12).

Except that these forms, relief decorated pieces are important (Fig. 13–15). A sherds with relief decoration (Fig. 13) and a sherds decorated with deep grooves are noteworthy (Fig. 14). There are also examples with concentric circle decoration and relief decoration (Fig. 15). In addition to the sherds, there are also examples of ground stone tools. Stone

mortar, pestle and a stone axe are represented by examples belonging to this group (Fig. 16).

An example of the jug form is remarkable and has the same quality as the Yortan jugs (Fig. 5). This jug which was unearthed because of illegal excavations was thrown into the grass as completely broken. As a result of our detailed searches, the jug was unearthed only with the fragments of which we could find most of them. This jug which consists of many broken pieces is handmade burnished and well fired. It has a round bottom, spherical body, narrow neck and vertical handle. The handle part is broken, and there are groove decorations on the handle. The body is decorated with chevron. It should also be decorated with grooves at the handle level. It is added with small amount of mica and lime and fine grit as an additive. It is well purified paste and finely crafted.

Similar Yortan jugs with vertical handles, beak spouts and flat bottoms and tripods are prominent<sup>16</sup>. There are also incised decorations on the body of these jugs. The Kızılkabağaç jug also has a vertical handle, a narrow and long neck, and an incised decoration on the shoulder. The bottom is flat and there are no feet. The lozenge patterns on the Western Anatolian origin vessels in a museum in Cambridge belong to the Yortan jugs and are among the dark-surfaced wares. These vessels came from Kula and Alaşehir<sup>17</sup>. Exactly similar to this decoration were used a lot on Kızılkabağaç bowls. The lozenge decorations were also found in Babaköy and are similar to Kızılkabağaç<sup>18</sup>.

Although many examples of jars have been collected, here

<sup>16</sup> KAMIL 1982, pl. 7–8.

<sup>17</sup> LAMB 1936/1937, 167.

<sup>18</sup> KÖKTEN 1949, 814; SIPAHI 2000, 106–110.

are examples with everted rims and narrow necks, except for the plain ones (Fig. 6). The jars are generally plain and have no decoration on their surfaces. No examples of Yortan type were encountered. Maybe there are similar ones in the lower layer, not in the layers destroyed during plowing. Jars usually have red and brown colours. Pastes offer a variety of colours such as grey, black, red and brown. There are vertical, horizontal and horseshoe-shaped handles on the jars. Horseshoe handles are similarly found in Troy I<sup>19</sup>, Beycesultan EBA 2 (level XVI)<sup>20</sup> and Demircihöyük Ware G (EBA)<sup>21</sup>.

The bowl form is a very remarkable and important group in Kızılkabaağaç (fig 6). Although their forms are similar in Kızılkabaağaç, the bowls are slipped in gray, black, red and brown. They are usually inverted rimmed bowls. The surface colours of the bowls are mainly gray (7 pieces, no: 8–14), black (3 pieces, no: 15–17), red (2 pieces, no: 18–19) and brown (2 pieces, no: 20–21). All of them are decorated with white paint. The decorations start from the rim of the bowls on the outer surface and descend towards the body. Pastes are also gray and black. In particular, the paste of the gray and black slipped bowls is also black. One of the red-slipped bowls are brown paste (no: 18) and the other is black paste (no: 19). On the brown slipped samples, the paste of one is brown (no: 20) and the other is black (no: 21).

Inverted rimmed black and gray surface bowls in Yortan A type vessels are similar in form to those found in Kızılkabaağaç<sup>22</sup>. The outer surfaces of the bowls at Kızılkabaağaç are decorated with white paint or matte white paint. Since there were not many bowls in Yortan, jugs were mostly found as cemetery finds and are known as Yortan jugs in the literature. For this reason, the most important and closest center where we can compare bowls is Beycesultan. Matt white painted wares that have been seen in Beycesultan since LCA continue especially in EBA. Similar ones of Kızılkabaağaç painted bowls appear in the early phases of Beycesultan EBA 2 and are similar in form (level XVIc). These examples consist of pedestal bowls and there are matte white paint decorations on the outer surface of the rim of these bowls with inverted rims. These bowls with inverted rims and pedestals are characteristic of EBA 2 in southwest Anatolia. In the Beycesultan level XVI, the pedestals are generally low and not exceeding 4cm in size. Most of these bowls are made in black. It consists of burnished ware, but sometimes red samples are also encountered. A few of them (especially in XVIc) were decorated with matte white paint patterns on the rims and it seems that the shape decorated in this way was devoid of handles<sup>23</sup>. Exactly similar to the bowls decorated with white paint at Kızılkabaağaç are seen in the earliest levels of Beycesultan EBA 2. This similarity indicates that the bowls at Kızılkabaağaç should also be dated to early EBA 2 or EBA 1. There are not many of these bowls in Yortan anyway. This is because it is a cemetery find. These bowls might have been numerous if they had been found at the site or in an excavation layer. Therefore, since the Yortan vessels are also dated to the EBA 1–2 period, they fit the Beycesultan layers

chronologically. Therefore, the Kızılkabaağaç painted bowls must be dated to EBA 1 and 2. These sherds belonging to the earliest level of EBA 2 in Beycesultan are also found in EBA 1. For this reason, it is possible to date these bowls to EBA 1–2, since we cannot distinguish between EBA 1 and 2.

Matte white painted samples on the outer surface of the bowls are common in many centers in southwest Anatolia<sup>24</sup>. Some of these are similar to those in Kızılkabaağaç. Sherds of bowls decorated with white paint were unearthed in Alaşehir-Gavurtepe. These EBA bowls are hand-made with inverted rims, are gray-black polished, and have paint decorations. It is considered to be contemporary with Troy II<sup>25</sup>. Likewise, these are similar forms with Kızılkabaağaç and Alaşehir is already close to here, but no detailed study has been done. It is natural that it resembles Kızılkabaağaç because Kızılkabaağaç has a connection with the Alaşehir plain. There are also EBA, MBA and LBA in Alaşehir-Gavurtepe. In Alaşehir-Gavurtepe, there are many handmade and black burnished ceramics belonging to the EBA. These are bowls with inverted rims, tripods or ring bottoms<sup>26</sup>. Evaluated by D. H. French as the Akhisar/Manisa and Balıkesir group, the EBA wares in this region include bowls with sharp profiles as well as those with cross-paint decoration on the outer surface. Such examples are similar to those in Kızılkabaağaç settlement<sup>27</sup>.

Again, there are similar painted bowls at Karataş in southwest Anatolia. Similar to the white-painted, red-polished bowls unearthed in the settlement in Karataş, are also found in Kızılkabaağaç. Those in Karataş are dated to EBA 2. The bowl decorated with white paint on a red surface at Karataş is similar to the one at Kızılkabaağaç<sup>28</sup>. It is also like the gray-surfaced, white-painted bowls found in the pithos tombs of Aphrodisias Pekmez I and dated to EBA 2<sup>29</sup>. The paint decorated bowls of Kızılkabaağaç are similar to the bowls in the Sadberk Hanım Museum<sup>30</sup>. Here, the bowl with black slip and white paint decoration on the rim is similar to the Kızılkabaağaç painted bowls.

In addition to the paint decorated bowls, there is also a knobbed decorated bowl with a handle (Fig. 8). This bowl has an inverted rim and has a knob on the rim. There is also a broken handle on the mouth. Therefore, it is an example with both a knob and a handle. It is also decorated with a relief that curves from the body to the bottom. There is also a knobbed relief towards the bottom. Although not exactly similar to this form, a different example is found in the earliest level of Beycesultan EBA 2 (XVIc). However, since this is a sherds, the vessel form could not be determined<sup>31</sup>.

Triple composite vessel samples are found in Yortan vessels. The surfaces of those in Yortan are decorated with incised decorations<sup>32</sup>. A sample piece from Kızılkabaağaç is broken, but it is certain that it belongs to a triple vessel (Fig. 9). There is groove decoration on the outside. Since it is

<sup>24</sup> MELLAART 1954, 236–237.

<sup>25</sup> MERİÇ 1988, 158–164, Fig. 5.

<sup>26</sup> MERİÇ 1990, 180–185.

<sup>27</sup> FRENCH 1969, 77–81.

<sup>28</sup> MELLINK 1968, 249, Fig. 41, Pl. 85.

<sup>29</sup> JOUKOWSKY 1986, 517.

<sup>30</sup> ANLAĞAN 1986, 57, Fig. 27.

<sup>31</sup> LLOYD/MELLAART 1962, 142, Fig. 22.

<sup>32</sup> KAMIL 1982, 104–105, Pl. 15.

<sup>19</sup> BLEGEN *et alii* 1950, Pl. 248.

<sup>20</sup> LLOYD/MELLAART 1962, 146.

<sup>21</sup> SEEHER 1987, 188, Pl. 52.

<sup>22</sup> KAMIL 1982, 25, Fig. 23–24, Pl. 3.

<sup>23</sup> LLOYD/MELLAART 1962, 141–142, Fig. 22.

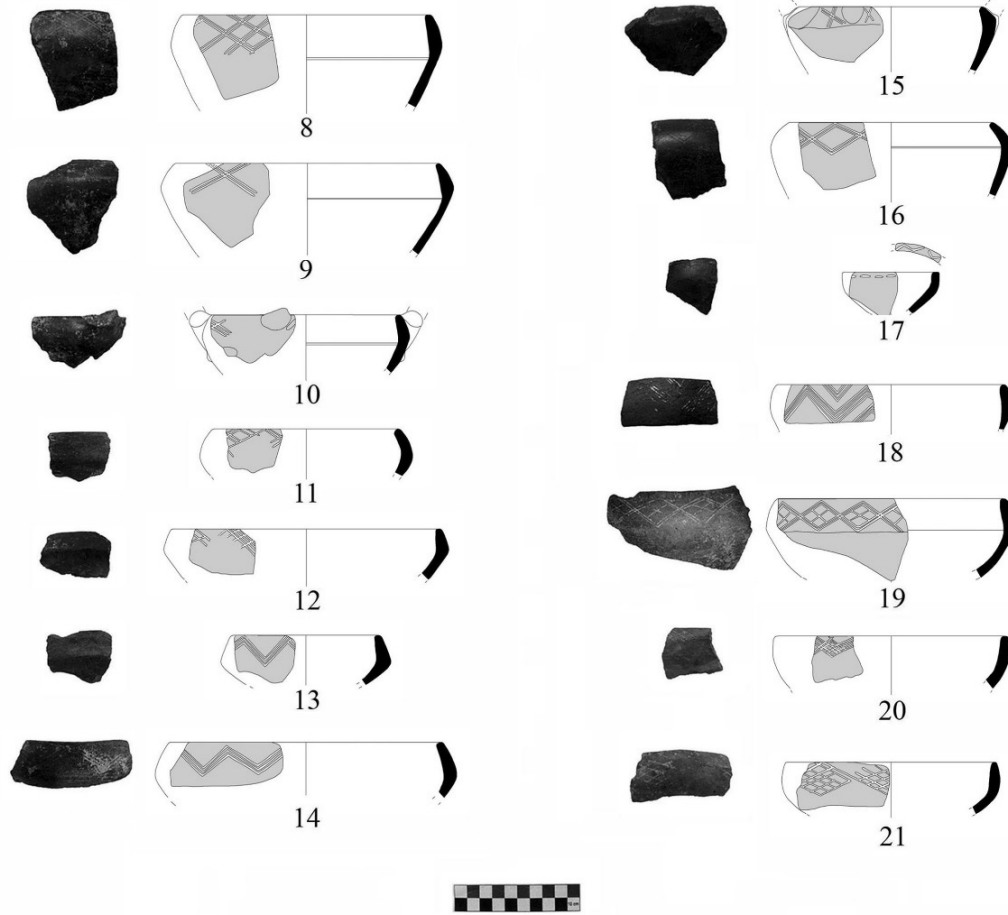


Fig. 7. White painted bowls.

broken, we cannot predict whether the decoration has spread over the entire bowl. The samples with incised and grooved decorations on the triple composite vessels are found in the Yortan vessels<sup>33</sup>. The one in Kızılkabaağaç is also decorated with grooves.

There is one lid, one of the typical examples of Yortan pottery, at Kızılkabaağaç (Fig. 10). Yortan has many examples for lids<sup>34</sup>. A piece that could have been a lid was found in Kızılkabaağaç. There are holes in the lids in Yortan, but since it is a broken piece in Kızılkabaağaç, it is difficult to say whether there is a hole or not. Yortan lids are incised decorated and similarly decorated in the example from Kızılkabaağaç. This lid form is similar to the Baklatepe EBA 1 sample. The Baklatepe lid form is dated to EBA 1 and only one example has been identified and is groove decorated. The decoration is in the shape of a poly-pointed star and this piece is brown slipped and polished. Since it is 24cm in diameter, it is thought to have been used in large pots<sup>35</sup>. The lid in Kızılkabaağaç is not star-shaped and its surface is also different. There is also an example in Beycesultan EBA 2 (level XV)<sup>36</sup>.

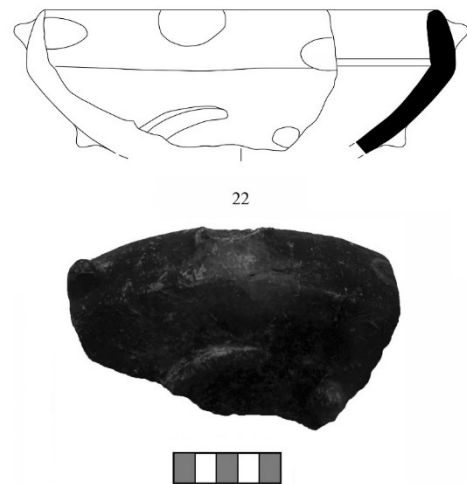


Fig. 8. Relief decorated bowl.

The pedestals (Fig. 11) are seen from Kumtepe I in Western Anatolia<sup>37</sup>. It is present in all layers (between Ia-h) in Troia I<sup>38</sup>, and it is intensely present in Beycesultan since EBA 1<sup>39</sup>. Likewise, feet are also present in Kumtepe from

<sup>33</sup> HÖCKMANN 1984, 126.

<sup>34</sup> KAMIL 1982, 33-34, Pl. 6.

<sup>35</sup> BÖYÜKULUSOY 2016, 91.

<sup>36</sup> LLOYD/MELLAART 1962, 164.

<sup>37</sup> SPERLING 1976, 320, Fig. 11.

<sup>38</sup> BLEGEN *et alii* 1950, Pl. 255.

<sup>39</sup> LLOYD/MELLAART 1962, 141-146.

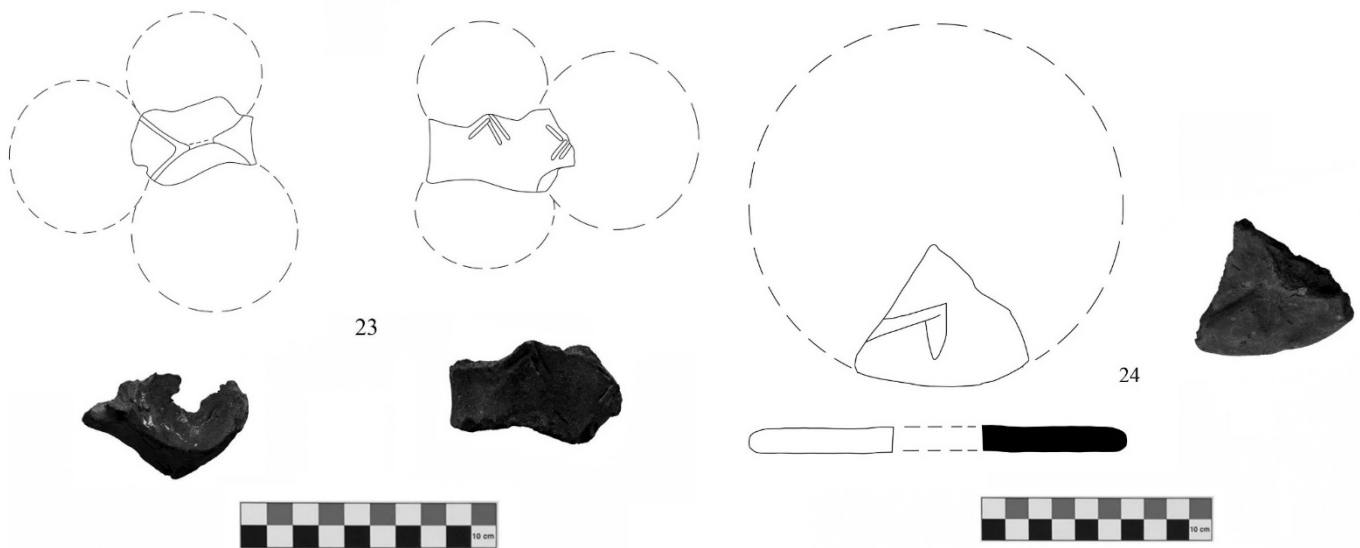


Fig. 9. Triple composite vessel.

Fig. 10. Lid.

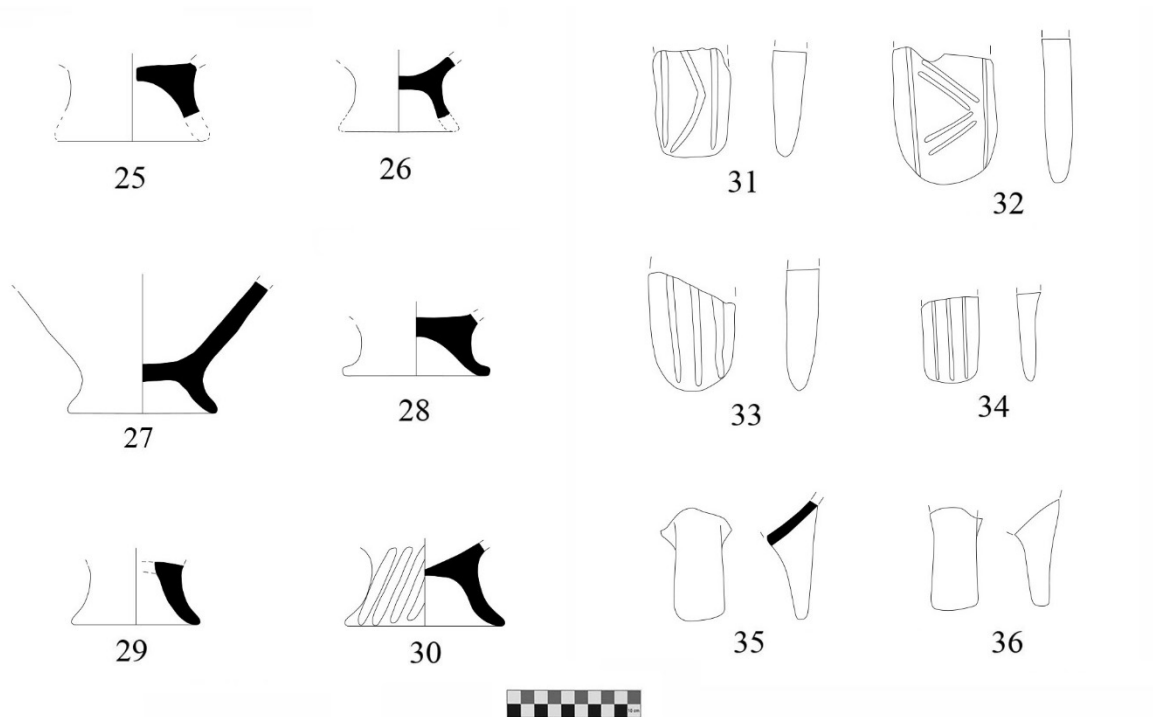


Fig. 11. Pedestals and legs.

IA<sup>40</sup>. There are also Troia I<sup>41</sup>, groove decorated feet similar to Aphrodisias/Pekmez 2 (EBA 2)<sup>42</sup>, and Beycesultan EBA 2 similar to this type of decorated examples (level XIII–XIV)<sup>43</sup>.

Groove decorated handles (Fig. 12) are numerous and varied in Beycesultan EBA 2<sup>44</sup>. Twisted handles are rarely found in Yortan<sup>45</sup>. There are also examples of twisted han-

dles in Kızılkabağaç. There are also handled and footed examples of matt white painted pedestal bowls in EBA 2. In Kızılkabağaç, the handles of the paint decorated bowls were found in 2 pieces even if they were broken. These can be plain as well as represented by bowls with handles<sup>46</sup>.

An example with a red slip and relief is remarkable (Fig. 13). Relief decorated jugs are found at Yortan and the reliefs on the surface are crescent-shaped<sup>47</sup>. However, the one in Kızılkabağaç must have belonged to a larger vessel

<sup>40</sup> SPERLING 1976, 325, Fig. 9.

<sup>41</sup> BLEGEN *et alii* 1950, Pl. 249.

<sup>42</sup> JOUKOWSKY 1986, 338.

<sup>43</sup> LLOYD/MELLAART 1962, 190.

<sup>44</sup> LLOYD/MELLAART 1962, 148.

<sup>45</sup> KAMIL 1982, Pl. 9.

<sup>46</sup> LLOYD/MELLAART 1962, 156.

<sup>47</sup> KAMIL 1982, 43, 101–104, Pl. 13.

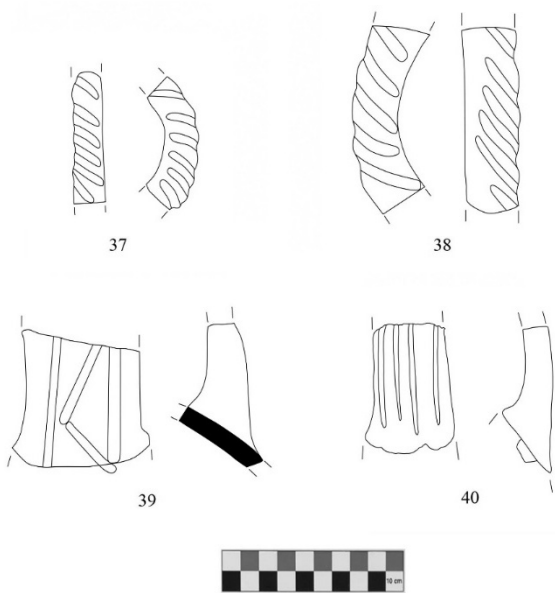


Fig. 12. Handles.

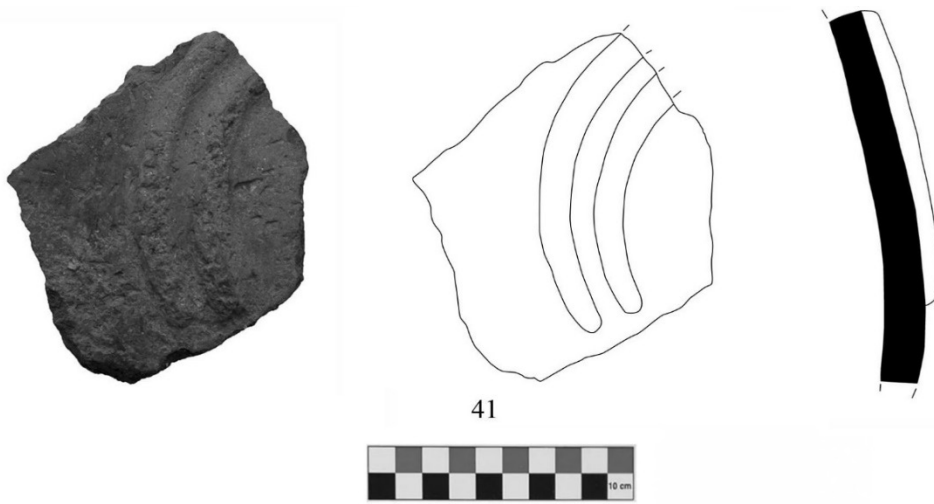


Fig. 13. Relief decorated piece.

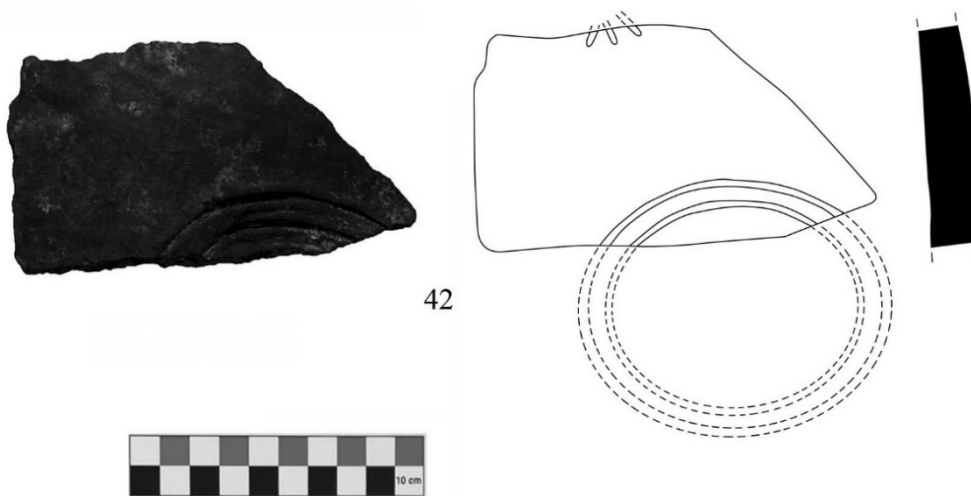


Fig. 14. Groove decorated piece.

than the jug form. Because it is a thick-walled specimen and also larger and thicker in relief. There is a similar relief on a wide-mouthed pithos dated to EBA 2 in Keçiçayırı settlement and it is important in terms of giving an idea. At Keçiçayırı, there is an intertwined crescent-shaped relief decoration on an unslipped, brown-surfaced vertical handled pithos<sup>48</sup>. Although this decoration is broken, it is helpful and gives an idea. The sherds at Kızılkabaağaç are red slipped and dark gray paste. The relief decoration in Kızılkabaağaç is more regular, even, and thicker. Although it does not give an idea as to what kind of vessel it belongs to because it is broken, it is possible that this piece belongs to a large jar or a pithos due to its thick wall. This piece is an important example indicating that relief decorations were also used in as well as paint decoration.

There is also a deeply grooved body fragment in Kızılkabaağaç, which belongs to a thick-walled vessel (Fig. 14). It may belong to a large jar or pithos. It is dark black slipped and black paste. Black colour is very dark. We can say that the two deeply cut groove decorations form a circular shape and motif based their process. Likewise, there are

three broken groove decorations on the other part. It is impossible to reconstruct the exact shape of the whole decoration because it is broken. The striking point of this piece is that it is different from the others in terms of quality. In addition to being of very high quality, considering the application of motifs, no similar ones could be found in terms of comparison. The different examples that we can compare are not similar to the one in Kızılkabaağaç. Therefore, it should be placed in a different place. Perhaps it belongs to the EBA 1 or LCA period.

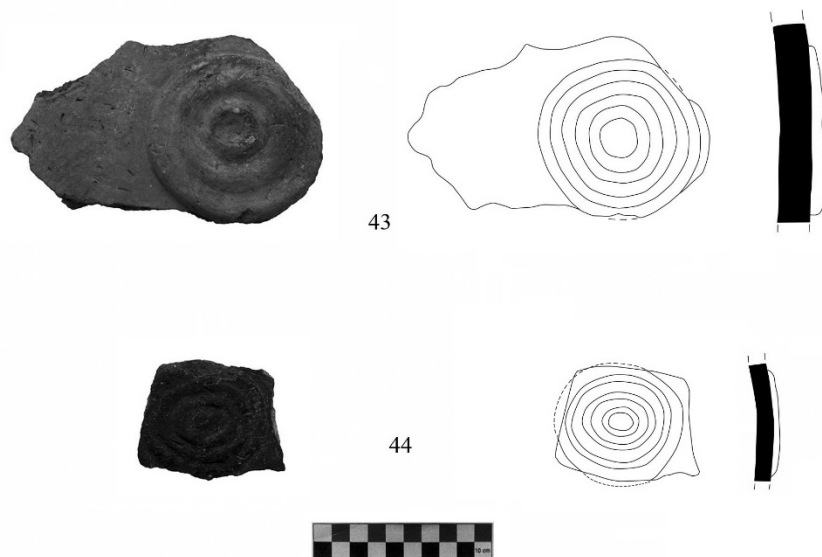
There are also concentric circle-shaped sherds in Kızılkabaağaç (Fig. 15). This type of relief-shaped concentric circle sherds is thick-walled and must belong to the pithos. It is very common in the Uşak region<sup>49</sup>. It has been detected in some settlements, especially in Dutluca, as it approaches the Büyük Menderes valley in the south of Uşak province<sup>50</sup>. Examples of this type were also found in Karataş-Semayük and were called medallion ware. The group included in the Karataş EBA pottery is in the medallion ware class. These wares have concentric circle relief

<sup>48</sup> TUNA 2017, 33, Pl. 14.

<sup>49</sup> OY 2018, 112.

<sup>50</sup> OY 2021, 77, Fig. 9.

decorations on pots and jars. The examples in Karataş are more regular and intermittent. It is more frequent and prominent in Kızılkabağağaç. There is a stylistic difference from Karataş. Maybe it is EBA, but it was made locally or it is in the EBA 2 phase. The medallion-wares in Karataş were found both in the megaron structures and in the cemetery area and are dated to the Troia I period. These were evaluated as a separate group in Karataş. The examples in Karataş are different from Kızılkabağağaç. While those in Kızılkabağağaç are more frequent and close concentric circles are more open in Karataş. The ones in Karataş have a relief in the middle, while the ones in Kızılkabağağaç do not. But those in Karataş have a relief in the middle of the concentric circle. In another example, there are different relief decorations. These relief medallions are characteristic in Level V of the settlement. The medallion in Karataş consists of a central button surrounded by three raised rings. Grooved handles and multiple medallions create a rich effect. There are several variants, and there are two separate circle-shaped medallions with a double pattern and side by side<sup>51</sup>.



**Fig. 15.** Concentric circle decoration pieces.

There are two examples of concentric spiral circle shape in Kızılkabağağaç (Fig. 15). They are similar to each other and one must belong to a thicker walled vessel or a pithos. The other one is relatively thin-walled and may belong to a large jar. Two pieces each belong to the body and the circles are located on the outer surface. A double handled and decorated pithos belonging to Kusura B has spiral circle decoration on its shoulder. But they are between the chevron decorations and in the shape of a Groove<sup>52</sup>. On the other hand, the ones in Kızılkabağağaç were made in relief and may belong to an earlier period than Kusura.

The spiral body fragment is found in the Beycesultan EBA 2 pottery (level XIII). This example is not exactly similar and the spirals are open<sup>53</sup>. The sherds in Kızılkabağağaç are more regular and different. Spiral circle body fragments are

found in Demircihöyük EBA levels (M-P). These are different from those in Kızılkabağağaç and are more discrete. Those in Kızılkabağağaç are more frequent and regular. Perhaps the finds at Kızılkabağağaç belong to an earlier period, while the finds at Demircihöyük may belong to the later stages of EBA 2<sup>54</sup>.

There are many examples that appear as spiral-shaped or stamps in EBA. These are seen in a wide geography from Tarsus Gözlükule to Lerna in Greece. This type is in the form of a stamp in Gözekule<sup>55</sup>. It is also in the form of a stamp in Lerna (Early Helladic Period). Those from Lerna were considered imported and were thought to have come from further north<sup>56</sup>. These are in relief in Kızılkabağağaç and there are differences. There are spiral stamps side by side on the rim of a pithos in Keos<sup>57</sup>. These examples, seen in a wide geography, are found in large numbers in the Uşak region and they are of similar nature.

There is a weight made of terracotta in Kızılkabağağaç (Fig. 16, no: 48) and it is possible to see its likenesses in all centers in Western Anatolia. There are especially many in Troia<sup>58</sup>. This weight is brown in colour and its paste is black. It is a coarse ware with plant and grit inclusions in its paste. The striking point is that the hole part is quite worn and wide due to being used a lot.

Ground stone tools are also found in Kızılkabağağaç (Fig. 16, no: 45–47). There are examples such as stone mortar, pestle and stone ax. Stone mortars are found in many EBA settlements in Western Anatolia in relation to production. A large number of stone mortars were found in the levels of the Karataş EBA settlement. These are considered to have been used in bread production<sup>59</sup>. Especially thousands of stone mortars and round stones were collected by Schliemann in Troia and are similar to Kızılkabağağaç<sup>60</sup>. It is similar to the LCA stone mortars in Kuruçay. There are many examples with single, double and triple pits in Kuruçay<sup>61</sup>. It is found in Kusura level B<sup>62</sup>, Bronze Age layers in Aphrodisias/Acropolis<sup>63</sup> and EBA levels of

Beycesultan (level X–XIII)<sup>64</sup>. Round stone tools are generally found in EBA settlements. Many similar tools were found in Demircihöyük EBA levels<sup>65</sup>. Similar stone axes are found in Karataş–Semayük EBA tombs<sup>66</sup>. The one in Kızılkabağağaç was found in the settlement and it is a large sized ax and it is broken. It is similar to the handle-hole axes dated to the EBA in Kuruçay Höyük. This type of handle-hole ax emerged in

<sup>54</sup> EFE 1988, 153, Pl. 52.

<sup>55</sup> GOLDMAN 1940, 71, Fig. 29.

<sup>56</sup> CASKEY 1957, 150, Pl. 40; CASKEY 1958, 132, Pl. 35.

<sup>57</sup> CASKEY 1972, 368, Pl. 79.

<sup>58</sup> SCHLIEMANN 1881, 559.

<sup>59</sup> WARNER 1994, 121, Pl. 194.

<sup>60</sup> SCHLIEMANN 1881, 235–236.

<sup>61</sup> DURU 1996, 60, Pl. 166.

<sup>62</sup> LAMB 1937, 46–47.

<sup>63</sup> JOUKOWSKY 1986, 228.

<sup>64</sup> LLOYD/MELLAART 1962, 270.

<sup>65</sup> SEEHER/KAUDER 1996, 174–179, Pl. 84.

<sup>66</sup> MELLINK 1967, 255, Fig. 20, Pl. 77.

<sup>51</sup> MELLINK 1968, 248–255, Fig. 24, Pl. 83.

<sup>52</sup> LAMB 1938, 248, Fig. 12.

<sup>53</sup> LLOYD/MELLAART 1962, 188, Fig. 45.

Anatolia in the EBA<sup>67</sup>. Similar axes with handle holes are also found in Demircihüyük<sup>68</sup> and Karataş settlement<sup>69</sup>.

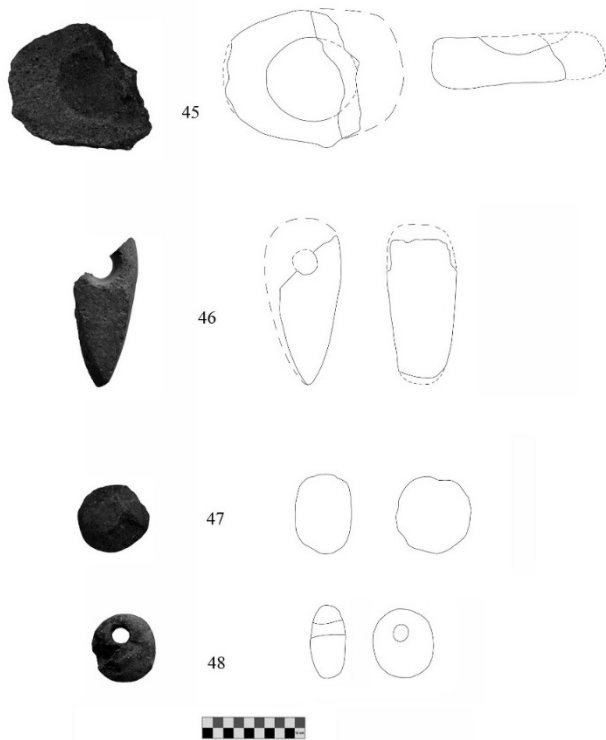


Fig. 16. Ground stone tools.

## DISCUSSION

The province of Uşak is in the Central West Anatolian part of the Aegean Regio that connects the West and Central Anatolia. In the province of Uşak, located on the edge of the Menderes massif, metamorphic units and young volcanic rocks belonging to this massif are dominant. The Eşme region where Kızılkabaağaç is located is in the catchment area of the Büyük Menderes and Gediz rivers. It is surrounded by mountains that are not too high and the central parts are composed of slightly wavy plateaus. Many EBA settlements in Western Anatolia were located on plain or plains. There are EBA settlements in the Uşak region, and there are also EBA settlements in other mountainous areas, especially in the Uşak plain and Banaz plain. EBA settlements around Eşme are generally concentrated in the areas where Eşme creek passes and in the south of the district. The determining factor here is Eşme Creek and other small streams associated with it. Kızılkabaağaç settlement is a mound-type settlement located near a water source in connection with one of these streams.

Kızılkabaağaç settlement is connected to the Alaşehir plain in its southwest. Kızılkabaağaç is 24km from the Sarıgöl district of Manisa and 35km from the Alaşehir district, and the Alaşehir plain is reached 20km to the southwest from the settlement. The Alaşehir plain is connected to the Gediz valley and natural roads pass through these areas and reach the Aegean Sea. It is able to reach the Büyük Menderes valley

as moving south from Kızılkabaağaç. Since Kızılkabaağaç is located near the Gediz, Küçük Menderes and Büyük Menderes valleys, it also interacts with these regions in the context of cultural relations. The settlement is 155km from Izmir and the seaside, and 292km from Troia, and these distances are not too far for traders and caravans in the EBA. It is not difficult to reach the plains of Sarıgöl and Alaşehir when it culturally exceeds the mountainous area in the west, and from there to reach Akhisar and Yortan by following the Gediz plain and moving to the northwest over the Salihli-Marmara Lake. The settlement is 32km from Kula, 70km from Salihli, and approximately 125km from Yortan cemetery, and it must have been able to establish connections and communication with other centers by following natural road routes, and perhaps there may be commercial relations.

Interregional contacts expand and intensify in the Early Bronze Age in Western Anatolia. The rivers in Western Anatolia are more advantageous in terms of transportation and trade compared to other regions in Anatolia<sup>70</sup>. These routes facilitate the exchange of goods and ideas and connect the regions<sup>71</sup>. The Gediz and Büyük Menderes valleys form the main roads connecting the inner parts of Western Anatolia and the coastal regions. Due to its proximity to the Gediz river valley and Büyük Menderes valleys, Kızılkabaağaç settlement is connected with the Yortan culture through the Gediz valley connection. It must have connections with the Büyük Menderes valley and the Beycesultan mound. Kızılkabaağaç settlement is also associated with the Upper Menderes valley. The settlement and Eşme district are located close to the Menderes valley. Likewise, the territory of Uşak province is located in the north of the Upper Menderes valley<sup>72</sup>. There was a dense settlement in these areas during the EBA.

In the EBA (3000 BC) in Western Anatolia, it is seen that large cemetery areas were created outside the settlement and this tradition became widespread<sup>73</sup>. A cemetery could not be identified in Kızılkabaağaç. The area just east of Kızılkabaağaç was named as Oklu Mezar by the local people. Oklu Mezar literally means “grave with an arrow” and perhaps derives from a cemetery located here. Although no cemetery can be detected in sight, there may be a cemetery on the opposite side of the stream. Perhaps the cemetery of the settlement may be in an area not too far away. Perhaps the cemetery must have been buried under alluvial fill, or it will be necessary to consider that there may be a cemetery in a nearby wooded and forested area. Or it is difficult to detect them because of agriculture in the region. There was no information from the local people that there was a cemetery.

Gray-black burnished wares dated to EBA 1–2 have a great weight in Kızılkabaağaç. These dark-faced wares are distinctive wares of the Troia-Yortan region. However, there are also red and brown wares in Kızılkabaağaç. This points to Kızılkabaağaç’s relations with Beycesultan as well as with the Troia-Yortan cultural region in Western Anatolia. The presence of both Yortan type vessels and finds pointing to the Beycesultan culture at Kızılkabaağaç makes it impossible to

<sup>67</sup> DURU 1996, 83, Pl. 177–178.

<sup>68</sup> SEEHER/KAUDER 1996, 177, Pl. 82.

<sup>69</sup> WARNER 1994, 208, Pl. 190.

<sup>70</sup> ŞAHOĞLU 2005, 342.

<sup>71</sup> THOMPSON 2007, 95–97.

<sup>72</sup> SEMİZ *et alii* 2018, 122.

<sup>73</sup> WHEELER 1974, 415.

define the cultural boundaries with precise lines in the areas where these cultural regions intersect. Under these conditions, the Uşak region is a region where both Troia-Yortan and Beycesultan cultures intersect. Surely, the chronological stratification of Beycesultan is clear here. However, since the stratification of the Yortan culture supported by an excavation has not been revealed, it creates chronological uncertainties. The presence of Yortan type wares is very evident in Kızılkabaağaç. For this reason, Yortan culture spread in a wider area in Western Anatolia. The Beycesultan EBA 1 cultural region is spread over a wide area in Central West Anatolia, from Denizli, Uşak, Afyon and Kütahya<sup>74</sup>. The fact that Beycesultan type marble idols were unearthed in the settlements in Western Anatolia and the presence of Troia type idols give ideas about the interaction area of Yortan culture. The interaction area of the Yortan culture must have extended to these geographies and regions, or at least these show the regional communication hinterland.

Babaköy cemetery is located in Balıkesir Bigadiç. It is approximately 50km from the Yortan cemetery. Most of the pottery in Babaköy is black slipped and very well burnished. Since Ovabayındır is highly damaged, it is impossible to make a sound interpretation of its stratification<sup>75</sup>. The pottery is burnished in black and gray tones and sometimes slipped. The studies of K. Bittel in Babaköy were limited. K. Bittel has revealed the connection between Yortan and Babaköy, but the data are limited as the graves have been excavated and the limited area has been studied<sup>76</sup>.

Black burnished and white painted pottery is common in the Late Chalcolithic Age (4000–3200 BC). In EBA 1, this tradition gradually gave way to red burnished and slipped pottery. The tradition of decorating with white paint is common in Western Anatolia. It is especially common in Thermi, Troia, Yortan<sup>77</sup>. Dark faced and black burnished pottery and white painting are typical in the Yortan culture and are generally dated to EBA 1–3. Yortan ceramics are divided into three groups as A-B-C. In EBA 1–2, there is a matte white paint decoration on the dark surfaced wares. It is characteristic that those with incised decorations are filled with white paste. Lids and feet are prominent in the examples of jug, jar and bowl forms. All of the paint decorations in Kızılkabaağaç are located on the outer surface.

Type A vessels at Yortan are handmade, and these black and gray vessels are common in northwest Anatolia in EBA 1–2. In the south, red and brown are common colours. It is either white filled or matt white painted as decoration. The origin of these decorations goes back to the Late Chalcolithic Age in Western Anatolia. White paint decorations and chevrons on a gray or black surface are common. In most of the settlements, the white paint decoration disappears at the end of EBA 2. The white painted vessels are not dense in any settlement. There are many paint-decorated vessels at Kızılkabaağaç. Perhaps this intensity is due to the demand for it. Maybe that layer was destroyed when the farmers plowed it out. However, in the researches carried out in both years, painted bowls were found in remarkable proportions.

<sup>74</sup> EFE 2003, 89–90; TURKTEKI 2020, 73–74.

<sup>75</sup> AKURGAL 1958, 157–164.

<sup>76</sup> KAMIL 1982, 6.

<sup>77</sup> OZGUÇ 1944, 67.

Not only here but also in the settlements throughout Eşme, especially in the settlements concentrated in the south of the district, EBA painted items are found in large quantities.

In Yortan, incised decoration is intense. The motifs are linear and filled with white paint. Knob and tuberous decorations are intense in type A vessels. Type B vessels, the second main type in Yortan, are dated to EBA 2. Type A vessel shapes must have continued in EBA 2. Type C vessels at Yortan are dated to EBA 3. A typological evaluation is made for Yortan because there is no stratigraphy. Matt white painted vessels are found in Troia or Beycesultan until the end of EBA 2, but they are not common. It was used a lot in Yortan. Type A vessels are of 3 main types. Bowls, jars and jugs. Most of the type A vessels are dated to EBA 2 or the early phase of EBA 2. Yortan pots are widespread in Balıkesir, Manisa and Akhisar regions. Beycesultan gives stratigraphy from the LCA to the end of the Bronze Age. Yortan pottery should be placed in a chronology accordingly. Kızılkabaağaç has an important position here. Because Yortan and Beycesultan cultures overlap here. If Yortan spread as far as Kızılkabaağaç and Eşme in EBA 2, what is the situation of Beycesultan? Yortan pottery is found in the south of Eşme and in Karahallı. These places are not far from Beycesultan. In this case, Yortan should be culturally active in a wider area. Although Kızılkabaağaç is closer to Gediz, it is also related to the Büyük Menderes. Kızılkabaağaç is also close to the Alaşehir plain. It is close to the border with Kula and reaching Gediz. It is connected to these places in terms of location, but the closest connection is via Alaşehir. Settlements such as Ahlatlı Tepecik<sup>78</sup> and Eski Balıkhane<sup>79</sup> on the shores of Marmara Lake around Gediz are associated with Yortan<sup>80</sup>. These settlements are connected with the Gediz River and the plain. Kızılkabaağaç is close to these places and there are relations between them. Yortan is spread over a wider area. It is necessary to expand the spread of Yortan culture a little further east from Manisa Akhisar towards Uşak and Eşme. The Kızılkabaağaç settlement demonstrates this.

## CONCLUSION

Yortan culture is generally represented and recognized by cemetery finds. However, there isn't any Yortan settlement has been identified so far. In addition, there is no excavation work to identify any settlement area belonging to this culture. Generally, Yortan culture is tried to be defined with cemetery finds. The discovery of a Yortan type jug in Kızılkabaağaç settlement and the presence of painted bowls are important examples from a settlement related to this culture. An excavation work to be carried out here will help define the settlement characteristics and vessel typology of this culture. Because describing Yortan culture only with cemetery finds does not provide enough data. For this reason, an excavation is required in order to determine the spread of this culture.

It is possible to show Manisa, Balıkesir and Uşak regions as core regions for Yortan culture. It can be assumed that

<sup>78</sup> MITTEN/YÜĞRÜM 1974, 22–29.

<sup>79</sup> MITTEN/YÜĞRÜM 1971, 191–95.

<sup>80</sup> KAMIL 1982, 14–72.

there is a wider spread area based on the surroundings of these regions.

Systematic excavations in Western Anatolia were carried out in settlements such as Troia, Beycesultan, Limantepe, Demircihöyük and Küllüoba. But there is no excavation that analyzes or explains the Yortan culture. Due to the lack of an excavation in which this culture can be compared chronologically, comparisons are made with Yortan vessels, which are mostly represented by surveys and museum artefacts. For this reason, Kızılkabaağaç settlement is important because of the Yortan type finds. The Yortan culture is generally defined by the finds from the graves. The finds from the settlement are important in terms of stratification. For this reason, an excavation is required in order to make chronological evaluations in Kızılkabaağaç settlement. Since the finds outside the cemetery are few, the Kızılkabaağaç find is important in terms of being in the settlement. Kızılkabaağaç is an important center showing the spread of this culture.

Yortan culture was evaluated as a cultural group together with Troia I. The Troia I-Yortan cultural region is dated to EBA 1 (3000–2700 BC). In the EBA, different cultural regions emerge in Western Anatolia. One of them is the Beycesultan cultural region. Kızılkabaağaç is also close to the Beycesultan settlement. Beycesultan is an important center that had an uninterrupted settlement throughout the Bronze Age, starting from the Late Chalcolithic Age. Beycesultan is the center that gives the most comprehensive chronology about the entire Bronze Age in Central West Anatolia. Kızılkabaağaç also has relations with Beycesultan. Kızılkabaağaç and Eşme regions are related to both Beycesultan culture and Yortan culture. Likewise, the province of Uşak is associated with these regions<sup>81</sup>. However, while the Beycesultan EBA chronology is known, it is not clear where the Yortan vessels will be chronologically settled here.

Since the Kızılkabaağaç sherds are similar to Beycesultan EBA 1 and 2, it is thought that this is a EBA 1–2 settlement. The Yortan vessels are also dated to EBA 1–2, in the same way and there is a similarity. If we consider some fragments in EBA 1–2, Kızılkabaağaç may have been inhabited since the Late Chalcolithic Age. Some sherds with black gray paint decoration can be dated back to the Late Chalcolithic Age (Fig. 7). Among these, the groove decorated sample (Fig. 7, no: 17) on the rim and the black slipped ware (Fig. 14, no: 42) in the form of a circle belong to the Late Chalcolithic Age.

One of the most distinctive features of the vessels belonging to the Yortan culture is that they are black-gray slipped. This cultural region is characterized by dark-faced and black burnished pottery.

It is accepted that the Yortan cultural region extends from Balıkesir to Kula from EBA 1. This culture, which got this name because it was first found in Yortan, mostly has pithos tombs. The mouths of the pithos tombs face east. Apart from their personal belongings, black, gray and dark brown slipped vessels were placed next to the dead. There are also some decorated with grooves, incisions and white paint in the vessels. It has also been revealed that this cemetery culture, which exists mostly around Balıkesir and Manisa, such as Yortan, Babaköy, Ovabayındır, Soma, extends southward

to Muğla<sup>82</sup>. We think that it has spread to the province of Uşak. Kızılkabaağaç is an important settlement that shows this.

Kızılkabaağaç settlement is located both in connection with Alaşehir plain and Gediz valley and not far from Büyük Menderes valley. The settlement is located in a region that is connected to the three great rivers and valleys of Western Anatolia. It is also open to cultural influences through these valleys and is also connected in terms of transportation, trade and interaction. Büyük Menderes Valley is located in the south of Eşme and Yelegen. To the west is the Gediz valley and the Alaşehir plain. It is also in a position to connect with Küçük Menderes via Sarıgöl, which is also on its border. Kızılkabaağaç must have benefited from the opportunities of these rivers and regions due to its location close to all these natural roads and transportation routes.

Dark-faced burnished wares are characteristic in the EBA Troia I-Yortan cultural region. There are also local pottery regions within this cultural region. These are Troas, Limnos, İzmir and Yortan regions<sup>83</sup>. Kızılkabaağaç is more associated with Yortan among these regions. The relations of Western Anatolia with the coastal areas are weak.

When we compare Kızılkabaağaç and Yortan vessels, the majority of Kızılkabaağaç vessels are similar to Yortan A type vessels. In comparisons, due to the similarities with type A vessels, it must be EBA 1–2 in terms of dating. Yortan is only known for dark-faced, incised decorated pottery. In addition to these, the tradition of relief decoration is strong in Kızılkabaağaç.

## ACKNOWLEDGEMENTS

This study was carried out with the permission of the Republic of Turkey Ministry of Culture and Tourism, General Directorate of Cultural Heritage and Museums. It was also financially supported by the Turkish Historical Society and Ordu University Scientific Research Projects Coordination Office.

## REFERENCES

- AKDENİZ 2009  
Akdeniz, E., New Observations about Yortan Cemetery, *Turkish Academy of Sciences Journal of Archaeology* 12, 49–64.
- AKURGAL 1958  
Akurgal, E., Yortankultur-Siedlung in Ovabayındır bei Balıkesir, *Anatolia* III, 157–164.
- ANLAĞAN 1986  
Anlağan, C., Sadberk Hanım Müzesi'nde Bulunan Bir Grup Eski Tunç Çağı Eseri, *X. Türk Tarih Kongresi* I, 65–70.
- BITTEL 1939/1941  
Bittel, K., Ein Gräberfeld der Yortan-Kultur bei Babaköy, *Archiv für Orientforschung* 13, 1–31.
- BITTEL 1942  
Bittel, K., Kleinasiatische Studien, *Istanbul Mitteilungen* 5.
- BLEGEN/CASKEY/RAWSON/SPERLING 1950  
Blegen, C.W./ Caskey, J.L./ Rawson, M./ Sperling, J., *Troia General Introduction, the First and Second Settlements, Volume*

<sup>81</sup> OY 2018.

<sup>82</sup> HARMANKAYA 2002, 7–34.

<sup>83</sup> FIDAN/SARI/TURKTEKI 2015, 68–69.

- I, Part 2: Plates (The University of Cincinnati, Princeton University Press).
- BÖYÜKULUSOY 2016  
Böyükulusoy, K., *Bakla Tepe Erken Tunç Çağı I Seramiğinin Ege Arkeolojisindeki Yeri ve Önemi*. (PhD thesis, Ankara: Hacettepe University).
- CASKEY 1957  
Caskey, J. L., Excavations at Lerna: 1956, *Hesperia* 26/2, 142–162.
- CASKEY 1958  
Caskey, J. L., Excavations at Lerna, 1957, *Hesperia* 27/2, 125–144.
- CASKEY 1972  
Caskey, J. L., Investigations in Keos: Part II: A Conspectus of the Pottery, *Hesperia* 41/3, 357–401.
- COLLIGNON 1901  
Collignon, M., Note sur les fouilles de M. Paul Gaudin dans la nécropole de Yortan, en Mysie, *Comptes rendus des séances de l'Académie des Inscriptions et Belles-Lettres* 45/6, 810–817.
- DURU 1996  
Duru, R., *Kuruçay Höyük II, Results of the excavations 1978–1988; the Late Chalcolithic and Early Bronze Settlements* (Ankara: Türk Tarih Kurumu Basımevi).
- EFE 1988  
Efe, T., *Demircihüyük III, 2: Die Ergebnisse der Ausgrabungen 1975–1978 Die Keramik 2. C: Die Frühbronzezeitliche Keramik Der Jüngeren Phasen (Ab Phase H)*. (ed.) M. O. Korfmann (Mainz am Rhein: Philip von Zabern).
- EFE 2003  
Efe, T., Pottery Distribution within the Early Bronze Age of Western Anatolia and its Implications upon Cultural, Political (and Ethnic?) Entities. In: Ozbaşaran, M./ Tanındı, O./ Boratav, A. (ed.), *Archaeological Essays in Honour of Homo Amatus: Güven Arsebük İçin Armağan Yazılar*, (Istanbul: Ege Yayınları) 87–103.
- ERCAN/DİNÇEL/METİN/TÜRKECAN/ ERDOĞDU 1978  
Ercan, T./ Dinçel, A./ Metin, S./ Türkecan, A./ Erdoğan, G., Geology of the Neogene basins in Uşak region, *Bulletin of the Geological Society of Turkey* 21, 97–106.
- ERCAN 1982  
Ercan, T., Geology of Kula Area and Petrology of Kula Volcanics, *Istanbul Earth Sciences Review* 3/1, 77–124.
- FİDAN/SARI/TÜRKTEKİ 2015  
Fidan, E./ Sarı, D./ Türkteki, M., An Overview of the Western Anatolian Early Bronze Age, *European Journal of Archaeology* 18/1, 60–89.
- FRENCH 1969  
French, D.H., Prehistoric Sites in Northwest Anatolia II. The Balıkesir and Akhisar/Manisa Areas, *Anatolian Studies* 19, 41–98.
- GOLDMAN 1940  
Goldman, H., Excavations at Gözlü Kule, Tarsus, 1938, *American Journal of Archaeology* 44/1, 60–86.
- GOETZE 1957  
Goetze, A., *Kleinasiens*, Kulturgeschichte des Alten Orients (Münih).
- HARMANKAYA 2002  
Harmankaya, S., Türkiye İlk Tunç Çağı Araştırmaları Üzerine Bir Değerlendirme, *Türkiye Arkeolojik Yerleşmeleri 4a/4b: İlk Tunç Çağı*, (İstanbul: TASK Vakfı Yayınları).
- HOCKMANN 1984  
Höckmann, O., Frühe Funde Aus Anatolien im Museum Altenessen, Essen, und in Privatbesitz, *Jahrbuch Des Römisch-Germanischen Zentralmuseums* 31, 97–136.
- HUTCHINSON 1935  
Hutchinson, R.W., Uruk and Yortan, *Iraq* 2/2, 211–222.
- HÜRYILMAZ 1997  
Hüryılmaz, H., İçbatı Anadolu Bölgesinde Bulunan Yortan Mezarlık Kültürü'ne Ait Üç Kap, *Belleten* 61, 499–518.
- JOUKOWSKY 1986  
Joukowsky, M. S., *Prehistoric Aphrodisias I–II*, (Louvain: Brown University).
- KAHYA/KANAAT 2018  
Kahya, A./ Kanaat, O., Geological, mineralogical and fluid inclusion characteristics of auriferous quartz veins at Güneyköy (Uşak, Eşme), Western Turkey, *Neues Jahrbuch für Mineralogie-Abhandlungen* 195/1, 11–25.
- KAMIL 1982  
Kamil, T., *Yortan Cemetery in the Early Bronze Age of Western Anatolia*, (Oxford: British Archaeological Reports, BAR 145).
- KARAOĞLU/HELVAÇI 2012  
Karaoğlu, O./ Helvacı, C., Growth, destruction and volcanic facies architecture of three volcanic centres in the Miocene Uşak–Güre basin, western Turkey: Subaqueous–subaerial volcanism in a lacustrine setting, *Journal of Volcanology and Geothermal Research* 245/246, 1–20.
- KÖKTEN 1949  
Kökten, K., 1949 Yılı Tarih Öncesi Araştırmalar Hakkında Kısa Rapor, *Belleten* 13, 811–829.
- LAMB 1936/1937  
Lamb, W., Some West Anatolian Vases at Cambridge, *The Annual of the British School at Athens* 37, 166–171.
- LAMB 1937  
Lamb, W., Excavations at Kusura near Afyon Karahisar, *Archaeologia* 86, 1–64.
- LAMB 1938  
Lamb, W., Excavations at Kusura near Afyon Karahisar: II, *Archaeologia* 87, 217–273.
- LLOYD/MELLAART 1962  
Lloyd, S./ Mellaart, J., *Beycesultan I, the Chalcolithic and Early Bronze Age Levels*, (London: British Institute of Archaeology at Ankara).
- MELLAART 1954  
Mellaart, J., Preliminary Report on a Survey of Pre-Classical Remains in Southern Turkey, *Anatolian Studies* 4, 175–240.
- MELLAART 1958  
Mellaart, J., The End of the Early Bronze Age in Anatolia and the Aegean, *American Journal of Archaeology* 62/1, 9–33.
- MELLINK 1967  
Mellink, M. J., Excavations at Karataş-Semayük in Lycia, 1966, *American Journal of Archaeology* 71/3, 251–267.
- MELLINK 1968  
Mellink, M. J., Excavations at Karataş-Semayük in Lycia, 1967, *American Journal of Archaeology* 72/3, 243–263.
- MERİÇ 1988  
Meriç, R., 1987 Yılı Alaşehir Kazısı, *Kazı Sonuçları Toplantısı X/1*, 157–170.
- MERİÇ 1990  
Meriç, R., 1988 Yılı Alaşehir Kazısı, *Kazı Sonuçları Toplantısı XI/1*, 179–190.
- MITTEN/YÜĞRÜM 1971  
Mitten, D.G./ Yügrüm, G., The Gygean Lake, 1969: Eski Balikhane, Preliminary Report, *Harvard Studies in Classical Philology* 75, 191–195.
- MITTEN/YÜĞRÜM 1974  
Mitten, D.G./ Yügrüm, G., Ahlatlı Tepecik, Beside the Gygean Lake, *Archaeology* 27/1, 22–29.
- ORTHMAN 1966  
Orthman, W., Keramik der Yortankultur in den Berliner Museen, *Istanbul Mitteilungen* 16, 1–26.

- OY 2018  
Oy, H., *İlk Tunç Çağı'nda Uşak I, (Merkez, Banaz ve Sivasi İlçeleri)*, (Ankara: Gece Kitaplığı).
- OY 2021  
Oy, H., New Survey and Typological Study of Prehistoric Wares of Dutluca Region, Uşak, Turkey, *Mediterranean Archaeology and Archaeometry* 21/2, 69–92.
- OZGÜÇ 1944  
Ozgüç, T., Yortan Mezarlık Kültürüne Ait Yeni Buluntular, *Belleten* 8, 53–70.
- SARI 2012  
Sarı, D., İlk Tunç Çağı ve Orta Tunç Çağı'nda Batı Anadolu'nun Kültürel ve Siyasal Gelişimi, *Masrop E-Dergi* 7, 112–249.
- SCHLIEMANN 1881  
Schliemann, H., *Ilios, the City and Country of the the Trojans, the Results of Researches and Discoveries on the Site of Troia and Throughout the Troad in the Years 1871–1879*, (New York: Harper Brothers).
- SEEHER 1987  
Seeher, J., *Demircihüyük III, 1: die Ergebnisse der Ausgrabungen 1975–1978 Die Keramik 1. A: Neolithische und Chalkolithische Keramik, B: Frühbronzezeitliche Keramik Der Älteren Phasen (Bis Phase G)*. Korfmann, M. O. (ed.), (Mainz am Rhein: Philip von Zabern).
- SEEHER/KAUDER 1996  
Seeher, A. B./Kauder, J. O., *Demircihüyük IV: Die Ergebnisse der Ausgrabungen 1975– 1978: Die Kleinfunde*, Korfmann, M. O. (ed.), (Mainz am Rhein: Philip von Zabern).
- SEMİZ/ABAY/DEDEOĞLU/KONAKÇI/OZAN 2018  
Semiz, B./Abay, E./Dedeoğlu, F./Konakçı, E./ Ozan, A., An Archaeometric Investigation of Early and Middle Bronze Age Pottery from the Upper Meander Basin in Southwestern Anatolia, *Mediterranean Archaeology and Archaeometry* 18/3, 121–150.
- SİPAHI 2000  
Sipahi, T., Babaköy Mezarlığından Bir Grup Yortan Seramiği, *Anadolu Medeniyetleri Müzesi 1999 Yıllığı*, 93–110.
- SPERLING 1976  
Sperling, J.W., Kum Tepe in the Troad: Trial Excavation, 1934, *Hesperia* 45/4, 305–364.
- ŞAHOĞLU 2005  
Şahoğlu, V., The Anatolian Trade Network and the Izmir Region during the Early Bronze Age, *Oxford Journal of Archaeology* 24/4, 339–361.
- THOMPSON 2007  
Thompson, D., At the Crossroads: Prehistoric Settlement in the Maeander Valley, *Anatolian Studies* 57, 87–99.
- TUNA 2017  
Tuna, Y., *Keçiçayırı İlk Tunç Çağı Çanak Çömleği*, (Master's Thesis, Bilecik Şeyh Edebali University).
- TURKTEKİ 2020  
Türkteki, S.U., Beycesultan Early Bronze Age I Pottery Group in the Light of New Data, *Mediterranean Archaeology and Archaeometry* 20/1, 59–75.
- WARNER 1994  
Warner, J.L., *Elmalı-Karataş II, the Early Bronze Age Village of Karataş*, (Bryn Mawr PA: Bryn Mawr College Archaeological Monographs).
- WHEELER 1974  
Wheeler, T.S., Early Bronze Age Burial Customs in Western Anatolia, *American Journal of Archaeology* 78/4, 415–425.
- WOLFGANG 1990  
Wolfgang, G., Eine Gruppe von Yortan-Gefaßen, *Archaeologische Anzeiger* 4, 479–487.
- YALÇINLAR 1955  
Yalçınlar, İ., Banaz Çayı Hazvası ve Uşak Civarında Bünye ve Morfoloji Araştırmaları, *Türk Coğrafya Dergisi* 13/14, 57–89.