



INSTITUTE OF ARCHEOLOGY
AND ART HISTORY OF ROMANIAN
ACADEMY CLUJ-NAPOCA



UNIVERSITATEA TEHNICĂ
DIN CLUJ-NAPOCA

JAHA
JOURNAL OF ANCIENT HISTORY
AND ARCHAEOLOGY

editura
MEGA

Journal of Ancient History and Archeology



Scopus®



Clarivate
Analytics



Central and Eastern European Online Library

EBSCO



CONTENTS

STUDIES

ANCIENT HISTORY

Arturo SANCHEZ SANZ

ENLIGHTENED BODIES. THE SYMBOLOGY OF TATTOOING IN ANCIENT THRACE..... 3

Okan AÇIL

ON THE JUDEAN POLITICAL INDEPENDENCE IN THE PERIOD OF THE HASMONEANS.....20

Samuel NIÓN-ÁLVAREZ

ROMAN EPIGRAPHY AND CULTURAL DYNAMICS: A VIEW FROM NORTHWESTERN IBERIA (FIRST-SECOND CENTURIES CE).....33

ARCHAEOLOGY

Ovidiu ȚENȚEA, Vlad CĂLINA, Călin TIMOC, Alexandru BERZOVAN

A ROMAN ARCHAEOLOGICAL LANDSCAPE WEST OF THE IRON GATES OF TRANSYLVANIA REDISCOVERED USING LIDAR TECHNOLOGY AND NEW ARCHIVE DOCUMENTS..... 47

Adem YURTSEVER

ANCIENT RESTORATION PRACTICES IN THE CITY OF PERGE.....64

Gayane POGHOSYAN

AN OVERVIEW OF THE OFFERING SCENES IN THE DECORATION OF URARTIAN BRONZE PLAQUES.....87

ARCHAEOLOGICAL MATERIAL

Makbule ERKAN, Akın TEMÜR

A GROUP OF LOOM WEIGHTS FROM SYEDRA..... 91

Zerrin AYDIN TAVUKÇU, Ayşe AVLİ, Sinem COŞKUN

REFLECTIONS OF THE CULT OF APOLLON IN ALABANDA: BILYCHNIS WITH HERACLES DESCRIPTION.....113

Dana KHOULI

THE SACRED RELATIONSHIP BETWEEN ANIMAL SYMBOLISM AND SAINTS ON SARCOPHAGI RELIQUARIES IN SYRIA.....123

Ahmad DAWA

CLASSICAL COLUMN CAPITALS IN TARTOUS MUSEUM.....129

Ofer GAT

A TYPOLOGICAL-MORPHOLOGICAL SPATIAL ANALYSIS OF POLY-CANDLEON GLASS LIGHTING GOBLET FROM THE ROMAN PERIOD IN ISRAEL: SPATIAL DISTRIBUTION AND CHRONOLOGICAL MOVEMENT AROUND THE MEDITERRANEAN BASIN.....138

Daniel MALAXA, Simina STANC, Luminița BEJENARU

RECONSTRUCTING ANCIENT HUMAN DIET BY VALUING ANIMAL REMAINS: ARCHAEOZOOLOGICAL DATA CONCERNING THE MULTICULTURAL SITE OF VEȚEL-LUNCĂ (HUNEDOARA COUNTY, ROMANIA).....157

Irene SALINERO-SÁNCHEZ

IDENTITIES FROM AN ARCHAEOLOGICAL PERSPECTIVE. THE SOUTH OF THE IBERIAN PENINSULA AS AN OBJECT OF STUDY FROM THE POINT OF VIEW OF CULTURAL MATERIAL (5TH-7TH CENTURIES AD).....166

NUMISMATICS

Stefan KRMNICEK, Kevin KÖRNER

NUMISGAMES. COMPUTER GAME-BASED KNOWLEDGE TRANSFER OF ROMAN COINAGE.....172

REVIEWS

Claudiu PURDEA

ANDREA POPA, MANAGEMENTUL INTEGRAT AL PATRIMONIULUI CULTURAL MONDIAL ÎN ROMÂNIA. STUDIU DE CAZ: FRONȚERA ROMANĂ ÎN DACIA. SITURILE DE EPOCĂ ROMANĂ DE LA BREȚCU, COMOLĂU ȘI BOROȘNEU MARE [THE INTEGRATED MANAGEMENT OF WORLD CULTURAL HERITAGE IN ROMANIA: CASE STUDY: THE ROMAN FRONTIER IN DACIA, THE SITES AT BREȚCU, COMOLĂU, AND BOROȘNEU MARE], SIBIU, ASTRA MUSEUM, 2023, 279P. ISBN 978-606-733-361-9.....178

Sergiu Traian SOCACIU

LAVINIA GRUMEZA, VICTOR COJOCARU, ȘTEFAN HONCU, LUCIAN MUNTEANU, CORPUS DER RÖMISCHEN FUNDE IM EUROPÄISCHEN BARBARICUM. RUMÄNIEN BAND 2. KREIS VASLUI, MEGA VERLAG, CLUJ-NAPOCA, 2022, 255P. ISBN 978-606-020-499-2.....182

Sergiu Traian SOCACIU

LAVINIA GRUMEZA, VICTOR COJOCARU, CRISTINA I. TICA (EDS.), THE SARMATIANS AND THE OTHERS. NOMADIC AND SEDENTARY CULTURES IN CENTRAL AND EASTERN EUROPE IN THE FIRST HALF OF THE 1ST MILLENNIUM AD, PONTICA ET MEDITERRANEA, XI, MEGA PUBLISHING HOUSE, CLUJ-NAPOCA, 2024, 502P. ISBN 978-606-020-783-2.....184

DOI: [HTTP://DX.DOI.ORG/10.14795/J.V10I4](http://dx.doi.org/10.14795/J.V10I4)

ISSN 2360 266x
ISSN-L 2360 266x

Design & layout: Francisc Baja



EDITURA MEGA | www.edituramega.ro
e-mail: mega@edituramega.ro

A GROUP OF LOOM WEIGHTS FROM SYEDRA

Abstract: This study examines 35 terracotta loom weights recovered during the excavations in the ancient city of Syedra, located in the Alanya district of Antalya. Humans have three basic needs to survive: nutrition, shelter and clothing. Although the exact date of the beginning of weaving, which emerged in order to meet the need for clothing, is unknown, archaeological data date back to the Upper Paleolithic Period. The development of weaving started with the Neolithic Period. Hand weaving is both tiring and takes a long time, which led to the emergence of weaving tools. Loom weights, used in weaving in Antiquity, were attached to the ends of the warp threads on the looms to keep the threads taut. Weaving weights of various forms are found in pyramidal and discoid forms in Syedra. Within the scope of the study, the artefacts were firstly measured and identified by digital methods, typologized according to the characteristics of their forms, and dated through their counterparts, taking into account the stratum in which they were found. There are no studies on loom weights in the Cilicia Region, which includes the ancient city of Syedra. Although no archaeological data has been found so far regarding the production of weaving tools and the existence of a weaving workshop in the ancient city of Syedra, the large number of loom weights found in the city strengthens the belief that they were locally produced rather than imported.

Keywords: *Cilicia Region, Antalya, Alanya, Syedra, weaving, weaving loom weights.*

The ancient city of Syedra is located within the borders of Seki Neighbourhood, also known as Asar Tepe, 20 km southeast of the center in the Alanya District of Antalya Province (Figs 1–2). The city, which has an altitude of approximately 400 m, is surrounded by the cities of Laertes, Nauloi, Korakesion and Hamaxia to the west and the cities of Iotape, Selinus and Antiochia ad Cragum and Sedre Stream to the east.¹ The city was located on the border of Cilicia and Pamphylia Regions in Antiquity.² Although the city was considered to belong to the Isauria Region for a time, researchers included it in the Mountainous Cilicia Region.³ According to ancient sources, the earliest information about the history of Syedra dates back to the Late Hellenistic Period, and Syedra became famous with the Syedrants' fight against Cilician pirates.⁴ Syedra was the first city in Cilicia to mint its own coins during the reign of Emperor Tiberius (14–37 AD), which bear the legends "CYEΔPE" or "CYEΔPEΩN" on their reverse.⁵ The period of prosperity experienced in the Roman Empire in the 2nd century AD was also observed in Syedra, whose

Makbule ERKAN

Ondokuz Mayıs University, Samsun, Turkey
makbuleerkan5@gmail.com

Akın TEMÜR

Ondokuz Mayıs University, Samsun, Turkey
akintemur@yahoo.com

DOI: 110.14795/j.v11i2.998

ISSN 2360 – 266X

ISSN-L 2360 – 266X

¹ HUBER 1993, 31–45.

² FRENCH 2014, 11.; CAN 2017, 38.

³ STEPHANUS BYZANTINOS, *ETHNICORUM*, 589; HIEROCLES, *SYNECDEMUS*, 679; PTOLEMAIUS, *GEOGRAPHIA*, 116.

⁴ MERKELBACH/STAUBER 1996, 1–54.

⁵ MITFORD 1980, 1247.

heyday was between the 2nd and 4th centuries AD.⁶ Syedra continued to be mentioned in episcopal lists until the 12th century AD.⁷

The city's name is mentioned in many ancient sources as Western travellers and scientists wrote about their trips to Anatolia in the 18th and 19th centuries. Heberdey and Wilhelm's examination of a few inscriptions at Syedra in the book they wrote after their trips to the region in 1891–1892 is the first research conducted in the city.⁸ Hüber conducted research in the city in 1967. During his surveys between 1990 and 2000, Hüber made architectural drawings of the city and created the city plan.⁹ Between 1994–1999, the first landscaping, cleaning and rescue excavations were carried out in the city under the direction of the Alanya Archaeological Museum.¹⁰ Between 2015 and 2016, Birol Can continued surveys in the city.¹¹ In 2019, the first systematic excavations in the city were initiated under the direction of the Alanya Archaeology Museum and the scientific supervision of H. Ertuğ Ergürer, a faculty member of Karamanoğlu Mehmetbey University Department of Archaeology, and continue today under their direction.

Weaving loom weights are among the most common finds in the ancient Syedra. The present study aims to introduce a group of loom weights recovered from the city and their typology to the scientific community given that no studies have yet been conducted on loom weights in the Mountainous Cilicia Region.

1. WEAVING IN ANTIQUITY

Although it has yet not been possible to precisely determine where, how, and when weaving and textile production, which emerged to meet the basic human need for clothing from ancient times to the present day, originated for the first time,¹² it is known that the earliest evidence related to weaving extends back to the Paleolithic Period. The perforated stones, teeth and shells attached to cords found in the Gravetien and Magdalenien cultures dated to the Upper Paleolithic Period were believed to have been used as bracelets or necklaces, indicating evidence of weaving.¹³ More recently, perforated ivory tools from the Aurignacian Zone in the Swabian Jura are considered to have been used to spin plant fibres for rope making or textiles.¹⁴ As can be seen in examples from the Upper Paleolithic period, the threads formed as a result of spinning plant fibers were used as necklaces by attaching them to perforated stones and ivory in daily use. Threads obtained from plant fibers led to the beginning of weaving.

In the Neolithic Period, when people settled down and domesticated their animals, weaving began. People who settled down began to produce auxiliary tools that they could use in weaving, and plant fibers were replaced by the wool

of domesticated animals. It is accepted that the first sheep were domesticated in Central Asia and in Anatolia at Çayönü around 7500 BC.¹⁵ Thanks to the domestication of sheep, it was also possible to access wool, a raw material for weaving. The raw materials for weaving consists of vegetal and animal fibres that have undergone various processes. While animal fibres were obtained from sheep, goats, and silkworm cocoons, vegetal fibres were mostly obtained from plants such as flax, hemp, cotton, and jute.¹⁶ Ropes were produced by spinning plant and animal fibres, which enabled weaving processes to be carried out. People produced weaving tools such as spindles, spindle whorls, weaving looms and weaving weights to save time and to enable the production of large quantities using hand power. These tools allowed faster processing of raw materials, and thus, textile technology emerged.

2. LOOM WEIGHTS

Terracotta weaving loom weights were used to tie the ends of the warp threads to keep the thread taut during weaving.¹⁷ These weights vary according to the type of fabric, as their weight and size affect the weaving; heavier weights were used for weaving thicker fabrics, while lighter ones were used for weaving thinner fabrics.¹⁸ The shape of the weights does not affect weaving; it varies according to periodic, cultural, and environmental factors.¹⁹ Loom weights are divided into three forms: discoid, pyramidal and conical.²⁰ Regarding the form of the “pyramidal loom weights”, commonly seen in Athens and its surroundings, we see that they have a square or square-like base cross-section and that they narrow and rise with a slight slope from the base to the top.²¹ Produced both by hand and with the moulding technique, these loom weights had single hanging holes between the 8th and 6th centuries BC and double holes in later periods. After the 4th century BC, the loom weights got larger, and their tops became wider.

The discoid loom weights, common in Western Anatolia and the Aegean Islands, are round with single or double hanging holes. While the early examples of the form were large and perforated in the centre, from the mid-6th century BC onwards, these hanging holes started to shift towards the edges.²² The discoid loom weights, known to be handmade, show a reduction in form after the mid-5th century BC. In the 4th century BC, discoid weights started to bulge outwards on both sides, which increased with the Hellenistic Period.²³

The last form is the conical loom weight, which has a round or nearly round base, an oval-shaped top, and always a single hanging hole. Identified with the city of Corinth, these weaving weights were mainly produced on the wheel and in

⁶ KARAMUT 1997, 50.

⁷ ERGURER 2023, 28.

⁸ ERGURER 2023, 33.

⁹ HUBER 1993, 57–58.

¹⁰ KARAMUT 1996, 49–56.

¹¹ CAN *et alii* 2017, 242.

¹² FAZLIOGLU 2001, 1.

¹³ BARBER 1991, 39.

¹⁴ OZDEMIR 2023, 3.

¹⁵ GONUL 1964, 80.; FAZLIOGLU 2001, 1.

¹⁶ ERGUN 2013, 25.

¹⁷ BARBER 1991, 79–82; FAZLIOGLU 2001, 24–28.

¹⁸ YILMAZ 2016, 102–103.

¹⁹ LASSEN 2013, 207.

²⁰ FAZLIOGLU 2001, 24.

²¹ TAMSU/AKÇA 202, 205.

²² TAMSU/AKÇA 202, 205.

²³ FAZLIOGLU 2001, 27.

moulds.²⁴ From the 8th century BC to the end of the 6th century BC, the base and top parts of the form were utterly flat, and the surfaces were slightly dished. At the end of the 6th century BC and the beginning of the 5th century BC, the top parts became pointed, and the base edges started to gain a profile. This style continued until the 1st century AD.²⁵

3. SYEDRA LOOM WEIGHTS

The 35 weaving loom weights found during the excavations and surveys in the ancient city of Syedra were evaluated under two groups: pyramidal and discoid. While two are pyramidal and analyzed under a single group, 33 are discoid and analyzed under five subtypes: flat, flat double-holed, dished, dished grooved and flat grooved.

Group 1: Pyramidal Weaving Loom Weights (Cat. No. 1-2)

The loom weights in this shape, represented by two examples, are handmade and have a square or square-like base cross-section with a single hanging hole. They have no decoration on the front or back. Hanging hole diameters vary between 1.6 and 2.7 cm, lengths between 7.7 and 10 cm, widths between 5 and 5.5 cm, and wall thicknesses between 2.4 and 3.5 cm.

Cat. No. 1 (Fig. 3) was recovered from the drilling in the southeast of the city wall. It weighs 132 g, has a broken top and a single hanging hole, and has some abrasions on the surface. Similar examples of the form are found in Assos.²⁶ The weaving loom weight in Cat. No. 2 (Fig. 4), another example of the form, was found during the excavations in the Tepidarium section of the Great Bath. It has a single, intact hanging hole, and the lower half of the body is missing. It weighs 265.50 gr. Similar forms are found in Parion²⁷ and Assos.²⁸ In the light of similar examples, it is possible to date the pyramidal loom weights found in Syedra to the 5th–4th century BC.

Group 2: Discoid Weaving Loom Weights (Cat. Nos. 3–35) (Cat. No. 3–35)

Discoid loom weights were evaluated under five subtypes: flat, flat double-holed, dished, dished grooved and flat grooved.

Type 1: Flat Single Hole Weaving Loom Weights (Cat. No. 3–18)

The distinctive feature of the handmade, round-shaped, flat weaving weights with a single hanging hole is the absence of curvature on the front and back sides. Sixteen weaving weights are included in this group, labelled as Type 1. There is no decoration on the back of the weaving weights. Hanging hole diameters range from 0.7 mm to 3 cm, lengths

from 7.2 to 12.4 cm, widths from 7.5 to 10.8 cm, wall thicknesses from 1 to 3.4 cm, and weights from 148.68 to 440.01 g.

The first example of the form, Cat. No. 3, recovered from the Temple, has a single broken hanging hole and weighs 169.97 g (Fig. 5). The loom weight has abrasions on the surface and fractures on the left top. On the front side of the weaving weight is an incised decoration in the shape of a “V”, as seen on an example found in Assos.²⁹ Cat. No. 4, 5, and 6 were recovered from the “Sütunlu (Colonnaded) Street”. The example in Cat. No. 4 has a single, intact hanging hole weighing 257.74 g (Fig. 6). The weight has abrasion and fractures on the surface and an incised “X” decoration on the front side. Similar weaving weights were found in Ionia³⁰ and Assos.³¹ Cat. No. 5 weighs 195.75 g (Fig. 7). The loom weight has a single and worn hanging hole, and there are abrasions and fractures on the surface. The 2 cm diameter circular seal impression on the obverse is similar to those found on an amphora from Ionia³² and Soli Pompeipolis.³³ Cat. No. 6 weighs 196.42 g. The top is broken and has a single hanging hole. There are three circular seal impressions on the front side (Fig. 8). Similar circular seal impressions, observed especially on amphorae, are found in Ionia³⁴, Patara³⁵ and Soli Pompeipolis.³⁶

The other example of the form, Cat. No. 7, was recovered from the Temple and weighs 173.03 g (Fig. 9). There is a circular seal impression with a diameter of 1.9 cm on the front side, and it has a single and intact hanging hole with abrasions on the surface. Similar seals are found on potter’s seals in Tarsus.³⁷ Similar weaving weights are found in Parion³⁸ and Assos.³⁹ Cat. No. 8 was recovered as a surface find with a single, intact hanging hole (Fig. 10). The front surface is slightly abraded and decorated with two horse-shoe-shaped ornaments. A similar example of this form was found in Assos.⁴⁰ Cat. No. 9, Cat. No. 10 and Cat. No. 11 were recovered as surface finds. Each has a single, intact hanging hole without front or back decoration. Cat. No. 9 weighs 281.09 g and is similar in form to those found in Ionia⁴¹ and Assos⁴² (Fig. 11). Cat. No. 10 has a more elliptical form than the other examples in the group due to abrasions (Fig. 12). Similar examples were found in Assos.⁴³ Cat. No. 11 has similar features to Cat. No. 10 and similar examples were found in Assos⁴⁴ (Fig. 13). Cat. No. 12, also recovered as a surface find, has a single, intact hanging hole and weighs 297.50 g (Fig. 14). It has a circular seal on the front and some abrasions on the surface. Similar seals are found on amphorae

²⁹ AYAZ 2019, Kat. No. 98.

³⁰ KOLENOGLU 2019, Kat. No. 114

³¹ AYAZ 2019, Kat. No. 98.

³² KOLENOGLU 2019, Kat. No. 21, 28, 43, 110.

³³ YAMANTURK 2019, Kat. No. Rhp. 6.

³⁴ KOLENOGLU 2019, Kat. No. 8.

³⁵ DUNDAR 2012, Kat. No. 89.

³⁶ YAMANTURK 2019, Kat. No. Kös. 35.

³⁷ GOLDMAN 1950, Pl. 175/497.

³⁸ OZDEMIR 2020, Kat. No. 24.

³⁹ AYAZ 2019, Kat. No. 88,112.

⁴⁰ AYAZ 2019, Kat. No. 94.

⁴¹ KOLENOGLU 2019, Kat. No. 25.

⁴² AYAZ 2019, Kat. No. 90,93.

⁴³ AYAZ 2019, Kat. No. 127,130.

⁴⁴ AYAZ 2019, Kat. No. 112.

²⁴ TAMSU/AKÇA 202, 205.

²⁵ FAZLIOGLU 2001, 28.

²⁶ AYAZ 2019, Kat. No. 160, 168, 174.

²⁷ OZDEMIR 2020, Kat.Nos. 3,9.

²⁸ AYAZ 2019, Kat. No. 165.

from Pnyx⁴⁵ and Patara.⁴⁶ A similar example of the weaving weight in form was found in Assos.⁴⁷

Cat. No. 13–18 were recorded as surface finds. Cat. No. 13 weighs 150.02 g with a single and intact hanging hole and abrasions on its surface (Fig. 15). It has no decoration on the front and back; its closest analogy in form was found in Parion.⁴⁸ Cat. No. 14 has a single, intact hanging hole, weighs 440.01 g, and is broken on the lower right side of the back (Fig. 16). It bears an inscribed seal impression of rectangular form on the front side. A similar form of the weaving weight was found in Assos.⁴⁹ Cat. No. 15 weighs 206.74 g (Fig. 17). It has a single and intact hanging hole with two circular seal impressions with a diameter of 1.2 cm on the front side. A similar example in form was found in Assos.⁵⁰ Cat. No. 16 shows some abrasions on its surface (Fig. 18). The weight has a single and intact hanging hole, and the front bears a seal impression in the shape of an anklebone. It weighs 184.60 g and is similar in form to the weights found in Assos.⁵¹ Cat. No. 17 weighs 181.74 g and has abrasions and fractures on the back (Fig. 19). The weight has a single, intact hanging hole, and the front side bears eight circular seal impressions. Similar weights in form were found in Corinth⁵², the Acropolis of Athens⁵³ and Assos.⁵⁴

The last example of the form, Cat. No. 18 has a broken top and weighs 148.68 g (Fig. 20). It bears decoration in the form of a key on the front side and seal impressions consisting of triangles above it. The key-shaped decoration on the weight is similar to the metal key examples found in Corinth.⁵⁵ A similar form of the weight was found in Parion.⁵⁶ Fazlıoğlu⁵⁷ explained that the early discoid weaving weights were large and had a single hanging hole, and the hanging holes shifted from the centre to the sides as of the mid–6th century BC. The incised letters, considered to have been made by potters to distinguish the size and weight of the weaving weights, were replaced by letters and seals consisting of ring seals after the 4th century BC. Based on this information and similar examples, it is possible to date the Syedra flat discoid weaving weights to the 6th–3rd century BC.

Type 2: Double-Holed Weaving Loom Weight (Cat. No. 19)

While double hanging holes are usually found side by side on weaving loom weights, in Syedra, they are placed one above the other, and no identical example has been found. The wear marks on the hanging holes indicate that both holes were used during weaving. The most distinctive feature of the hand-shaped, round loom weights is the two solid hanging holes, one below the other. There is only one

example of this type in Syedra. Cat. No. 19 was recovered as a surface find and weighs 203.27 g (Fig. 21). Similar weights were found in Ionia⁵⁸ and Parion.⁵⁹ In the light of similar examples, the Syedra example is dated to the 5th–4th century BC.

Type 3: Dished Single Hole Weaving Loom Weights (Cat. No. 20–26)

The curvature on the front and back sides is the most prominent feature of these loom weights, called Type 3, which are hand-shaped, round, and have a single hanging hole. Seven loom weights were evaluated in this group. There is no decoration on the back of the weights. Hanging hole diameters range from 1 to 2.3 cm, lengths from 8.6 to 12.8 cm, widths from 7.6 to 13.2 cm, wall thicknesses from 1.2 to 3.9 cm, and weights from 153.11 to 500 g.

Cat. No. 20–24 were recovered as surface finds. The first example, Cat. No. 20, which has a single and intact hanging hole, was found broken. Weighing 339.98 g, the loom weight has a curvature and a single row of grooves on the front side. A similar example was found in Tarsus.⁶⁰ Cat. No. 21 weighs 500 g and has abrasions on its surface (Fig. 23). It has a single, intact hanging hole. The front side is dished and has a deep, circular impression. Similar seal impressions are observed on Patara⁶¹ amphorae. Similar forms were found in Pnyx,⁶² Parion⁶³ and Ionia.⁶⁴ Cat. No. 22 also has a single, intact hanging hole, but the base is missing (Fig. 24). Weighing 401.80 g, it bears three deepened rectangular seal impressions on the front side. A similar example in form was found in Assos.⁶⁵ Cat. No. 23 weighs 386.46 g (Fig. 25). It has a single, intact hanging hole, some abrasions on the surface, and a quadrangular seal impression on the front side, as in Cat. No. 22. Similar forms were found in Assos⁶⁶ and Parion.⁶⁷ Cat. No. 24 is another example of the form (Fig. 26). It weighs 315.12 g, has a single and intact hanging hole, and abrasions on the surface. The weight has a horseshoe-shaped seal impression on the front, and a similar example was found in Parion.⁶⁸ Cat. No. 25 and 26 were recovered from Sütunlu (Colonnaded) Street. Cat. No. 25 is missing half of the weaving weight and has a single and broken hanging hole (Fig. 27). The front side bears an “X” in a square with a notch decoration around it. Weighing 272.34 g, similar examples in form were found in Assos⁶⁹ and Tarsus.⁷⁰ The last example, Cat. No. 26, weighs 153.11 g (Fig. 28). Its top is missing. The front side has a bird-like figure in a circle, made in the relief impression mould technique. The figure is similar to

⁴⁵ GRACE 1956, Pl. 76/215.

⁴⁶ DUNDAR 2012, Kat. No. 85.

⁴⁷ AYZAZ 2019, Kat. No. 84.

⁴⁸ OZDEMIR 2020, Kat. No. 16.

⁴⁹ AYZAZ 2019, Kat. No. 94.

⁵⁰ AYZAZ 2019, Kat. No. 129.

⁵¹ AYZAZ 2019, Kat. Nos. 80, 87, 99, 110.

⁵² DAVIDSON 1952, Pl. 74/1124.

⁵³ GOLDMAN 1940, Fig. 257/2.

⁵⁴ AYZAZ 2019, Kat. No. 84.

⁵⁵ DAVIDSON 1952, Pl. 70/989–990.

⁵⁶ OZDEMIR 2020, Kat. No. 25.

⁵⁷ FAZLIOGLU 2001, 26.

⁵⁸ KOLENOGLU 2019, Kat. No. 199–252.

⁵⁹ OZDEMIR 2020, Kat. No. 17.

⁶⁰ GOLDMAN 1950, Pl. 268/25,26,27,28.

⁶¹ DUNDAR 2012, Kat. No. 91.

⁶² DAVIDSON/THOMPSON 1943, Fig. 41/146.

⁶³ OZDEMIR 2020, Kat. No. 32.

⁶⁴ KOLENOGLU 2019, Kat. No. 73.

⁶⁵ AYZAZ 2019, Kat. No. 130.

⁶⁶ AYZAZ 2019, Kat. No. 130.

⁶⁷ OZDEMIR 2020, Kat. No. 25.

⁶⁸ OZDEMIR 2020, Kat. No. 23.

⁶⁹ AYZAZ 2019, Kat. No. 96.

⁷⁰ GOLDMAN 1950, Pl. 175/461.

an example from Pnyx,⁷¹ and a similar example in form was found in Parion.⁷²

Fazlıoğlu⁷³ noted that in the 4th century BC, the front and back sides of the discoid weaving weights began to curve outwards, and the curvature increased even more in the Hellenistic Period. Accordingly, Cat. No. 21–22 are dated to the 3rd–1st century BC as they are more outwardly dished than the other examples. The other weights in the group are generally dated to the Hellenistic Period in the light of similar examples.

Type 4: Dished Single Hole Grooved Weaving Loom Weights (Cat. Nos. 27–30)

The most distinctive feature of these hand-shaped, round, single-hanging, holed, dished and grooved loom weights is the curvature on the front and back sides and the presence of concentric circular grooves on the front side. Four loom weights were included in this group, with hanging hole diameters ranging from 1.2 to 2 cm, lengths from 8.5 to 11.4 cm, widths from 10 to 13.2 cm, wall thicknesses from 2.5 to 3.4 cm, and weights from 251.16 to 444.24 g.

The first example of the form, Cat. No. 27, was recovered from the Sütunlu (Colonnaded) Street and weighs 444.24 g (Fig. 29). The weaving weight, which is missing the top, has two convex concentric circular grooves on the front side. Similar examples in form were found in Pnyx⁷⁴ and Tarsus.⁷⁵ Cat. No. 28 (Fig. 30) and 29 (Fig. 31), recovered as surface finds, have single, intact hanging holes with curvature and three convex deepened concentric circular grooves on the front. Similar examples in form and decoration were found in Tarsus,⁷⁶ Korinth⁷⁷ and Assos.⁷⁸ The last example, Cat. No. 30, was recovered from the Temple and weighs 409.97 g (Fig. 32). It is missing the top, which is broken, and has a single hanging hole. The weight has four concentric circular grooves on the front side. Similar examples in form and decoration were found in Parion⁷⁹ and Tarsus.⁸⁰ The curvatures in the weaving weights, evaluated as dished and grooved, are observed to rise gradually with the concentric grooves and become more pronounced and outward. Accordingly, examples of this form are dated to the 3rd–1st century BC. The uniformity of the concentric grooves on the loom weights, which have been assumed to have been shaped by hand, strengthens the opinion that they may have been produced on the wheel.

Type 5: Flat Single Hole Grooved Weaving Loom Weights (Cat. Nos. 31–35)

Five weaving loom weights were analyzed under Type 5. They are hand-shaped, round, and have a single hanging hole. The most distinctive features of the form are the

absence of curvature on the front and back sides and the presence of concentric circular grooves on the front side. The hanging hole diameters of the weaving weights of this group range from 1 to 2.6 cm, lengths from 10.8 to 12 cm, widths from 7 to 11.4 cm, wall thicknesses from 1.6 to 2.6 cm, and weights from 210.04 to 331.78 g.

Cat. No. 31–34 were recovered as surface finds. Cat. No. 31 (Fig. 33) and 32 (Fig. 34) have a single, intact hanging hole with three deepened concentric circular grooves. Cat. No. 31 also has a floral print with small triangles in the centre, with intense burn marks on the front and back. Similar examples in form were found in Tarsus⁸¹ and Assos.⁸² Cat. No. 33 has a single, intact hanging hole and weighs 246.44 g (Fig. 35). Different from Cat. No. 31 and 32, it has four concentric circular grooves on the front face. A similar example in form and decoration was found in Tarsus.⁸³ Cat. No. 34 weighs 284.20 g and was recovered as a surface find (Fig. 36). It has a single, intact hanging hole placed higher than other weights. Unlike the previous examples, there are five concentric circular grooves on the front side. A similar example was found in Tarsus.⁸⁴ Cat. No. 35 was recovered from the Temple and is half missing (Fig. 37). The weight has a single, broken hanging hole with four concentric circular grooves on the front side. The outermost groove is flanked by a deep, circular seal impression. Similar seals are found on Patara amphorae.⁸⁵ A similar form of weaving weight was found in Tarsus.⁸⁶ The discoid loom weights become smaller after the mid-5th century BC. Since this shrinkage is not observed on the Syedra flat grooved loom weights and considering similar examples, it would be appropriate to date them to the mid-6th–5th century BC. As with the dished grooved weaving weights, it is assumed that the grooves on the loom weights in this group may have been made on the wheel.

ASSESSMENT AND CONCLUSION

This study analyzed 35 loom weights recovered from the ancient city of Syedra, which were classified under pyramidal and discoid groups. The discoid forms were further divided into subtypes. Two of the 35 loom weights are pyramidal, while 33 are discoid. Two pyramidal-shaped loom weights were recovered from the Tepidarium section of the Great Bath and the drillings conducted southeast of the city wall, and analyzed under a single type (Cat. No. 1–2). Similar examples are found in Parion and Assos and date back to the 5th to 4th century BC. The 35 discoid-shaped loom weights were divided into five types. Four were found in the Temple, six in the Sütunlu (Colonnaded) Street and 23 as surface finds. The 16 flat single-holed loom weights (Cat. No. 3–18), referred to as Type 1, are dated to the 6th–3rd century BC. The hanging holes of the flat double-holed weaving loom weight (Cat. No. 19), of Type 2, were placed one below the other, with no similar examples found yet. The type is dated to the 5th–4th century BC. The seven dished single-hole loom weights (Cat.

⁷¹ DAVIDSON/THOMPSON 1943, Fig. 39/No. 146.

⁷² OZDEMIR 2020, Kat. No. 31.

⁷³ FAZLIOĞLU 2001, 27.

⁷⁴ DAVIDSON/THOMPSON 1943, Fig.41/No.147.

⁷⁵ GOLDMAN 1950, Pl. 269/35.

⁷⁶ GOLDMAN 1950, Pl. 269/35.

⁷⁷ DAVIDSON 1952, Pl. 77/1208.

⁷⁸ AYAZ 2019, Kat. No. 105.

⁷⁹ OZDEMIR 2020, Kat. No. 27.

⁸⁰ GOLDMAN 1950, Pl. 269/35.

⁸¹ GOLDMAN 1950, Pl. 269/35.

⁸² AYAZ 2019, Kat. No. 88.

⁸³ GOLDMAN 1950, Pl. 268/29.

⁸⁴ GOLDMAN 1950, Pl. 269/35.

⁸⁵ DUNDAR 2012, Kat. No. 84.

⁸⁶ GOLDMAN 1950, Pl. 269/35.

No. 20–26), designated as Type 3, are dated to the 3rd–1st century BC, since the dished form of the weaving weights in Cat. No. 21–22 is more outward than the other examples. The other weaving weights in the group are dated to the last quarter of the 4th century BC and the first quarter of the 1st century BC. The four dished single-hole grooved loom weights of Type 4 (Cat. Nos. 27–30) are dated to the 3rd–1st century BC. The last form, Type 5, consists of five flat, single-hole, grooved loom weights (Cat. No. 31–35) and is dated to the mid–6th–5th century BC. While the discoid weaving weights are said to have been shaped by hand, the regularity of the concentric grooves on the front side of the dished and flat grooved discoid weaving weights suggests that they were produced on the wheel.

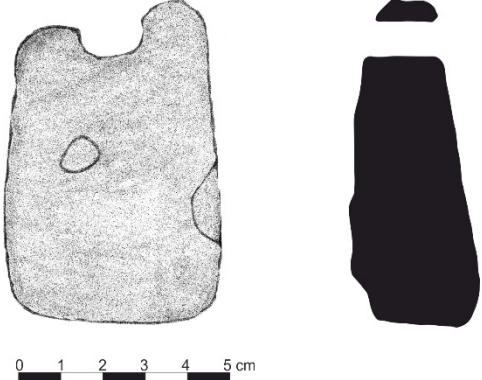
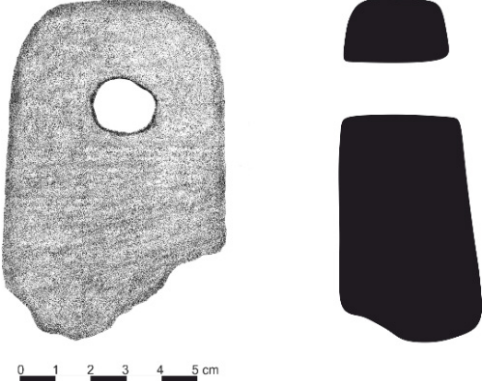
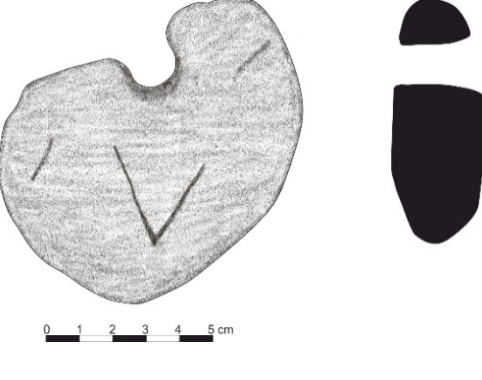
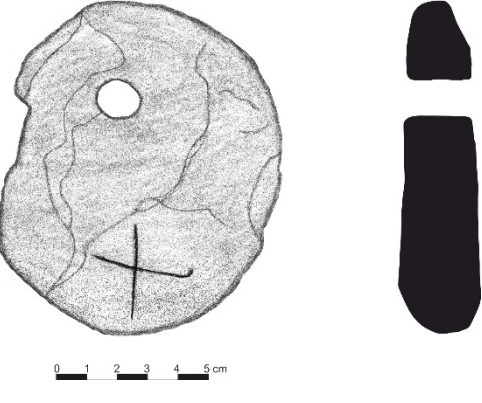
The back sides of the weaving weights recovered from Syedra were left blank, while the front sides of most bear incised decorations, stamps or seal impressions. Of the weaving weights examined in this study, six are undecorated, one is inscribed, one has a relief figure, three have incised decoration, 13 have seal stamps, and nine are grooved. These stamps may have been made by the producers as workshop emblems or to distinguish between different groups of weights, or they may have been commissioned by the rulers.

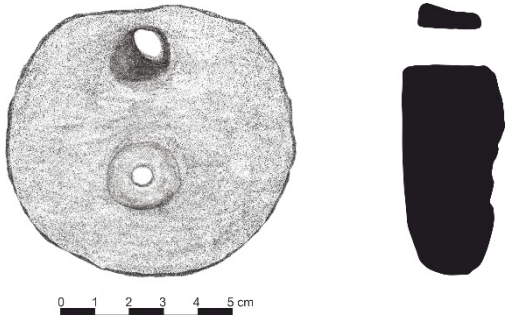
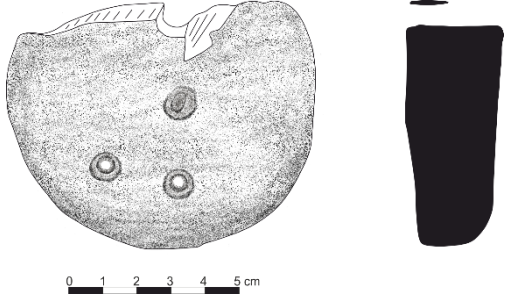
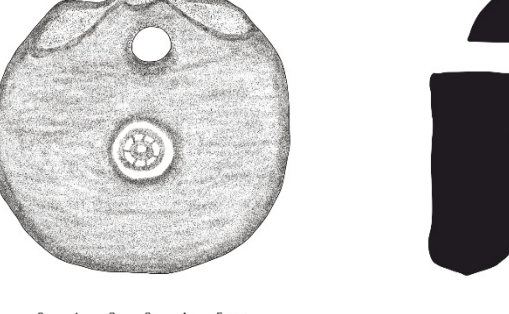
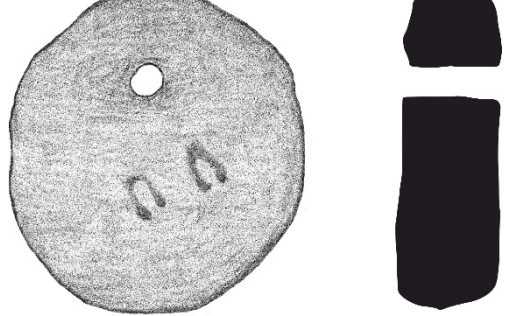
Overall, the weaving loom weights are typologically similar to the examples from Pnyx, Athens and Corinth in Greece and the cities of Assos, Gözlükule and Parion in Ionia, Anatolia.

Similar examples of the decorations and seal stamps on the weaving weights were found at Pnyx, Corinth, Patara, Gözlükule and Soli Pompeipolis. Since no studies have yet been conducted on the weaving weights found in Cilicia and the nearby region, comparable examples are limited to the cities and regions studied.

The discovery of numerous loom weights during the excavations at the ancient city of Syedra is also due to the fact that the climate, vegetation, and terrain are suitable for animal husbandry. Furthermore, the discovery of numerous loom weights in the city suggests that there might have been a textile trade in addition to production for daily use. However, no definitive evidence has been found regarding the production of weaving tools or the existence of a weaving workshop. Therefore, it is currently impossible to conclude that the Syedra loom weights were locally produced. It would, therefore, be correct to say that they were imported and used, unless the data obtained over time will prove otherwise.

CATALOGUE

Cat. No: 1	(Fig. 3)	
Excavation Inv. No: Acm 5		
Material: Terracotta		
Finding Location: Drilling I		
Measurements: Length: 7.7 cm Width: 5 cm Hole Diameter: 1.6 cm Wall Thickness: 2.4 cm Weight: 132 g		
Clay Colour: GLEY 1 3/N Very Dark Gray		
Additives: Moderate Sand, little grit, little fire clay and mica		
Description: Broken single hanging hole, abrasions on surface, hard texture, porous and powdery surface.		
Date: 5th–4th century BC		
Analogues: AYAZ 2019, Lev. 30, 32, 33/Kat. Nos. 160, 168, 174.		
Cat. No: 2	(Fig. 4)	
Excavation Inv. No: Acp 34		
Material: Terracotta		
Finding Location: Great BathTepidarium		
Measurements: Length: 10 cm Width: 5.5 cm Hole Diameter: 2.7 cm Wall Thickness: 3.5 cm Weight: 265.50 g		
Clay Colour: 7.5 YR 6/4 Light Brown		
Additives: Moderate Sand, little grit and mica		
Description: Single and intact hanging hole, lower half of body broken and incomplete, abrasions on the surface, small layer of limestone, hard texture, porous, powdery surface.		
Date: 5th–4th century BC		
Analogues: AYAZ 2019, Lev. 31/Kat. No. 165; OZDEMİR 2020, Kat. Nos. 3, 9.		
Cat. No: 3	(Fig. 5)	
Excavation Inv. No: AAH 4		
Material: Terracotta		
Finding Location: Temple		
Measurements: Length: 8.5 cm Width: 9 cm Hole Diameter: 1.5–2 cm Wall Thickness: 1.3–2.7 cm Weight: 169.97 g		
Clay Colour: 10 R 6/8 Light Red		
Additives: Dense lime and sand		
Description: Single and broken hanging hole, abrasions and fractures on the surface, incised decoration in the form of the letter “V” on the front, hard texture, porous and powdery surface.		
Date: 6th–3rd century BC		
Analogues: AYAZ 2019, Lev. 19/Kat. No. 98		
Cat. No: 4	(Fig. 6)	
Excavation Inv. No: AAE 18		
Material: Terracotta		
Finding Location: Sütunlu (Colonnaded) Street		
Measurements: Length: 11 cm Width: 9.3 cm Hole Diameter: 1.2 cm Wall Thickness: 1.5–2.5 cm Weight: 257.74 g		
Clay Colour: 10 R 5/6 Red		
Additives: Moderate mica, fire clay and sand		
Description: Single, intact hanging hole, abrasions and fractures on the surface, moderate limestone layer on the front with incised decoration in the form of an “X”, hard texture and powdery surface.		
Date: 6th–3rd century BC		
Analogues: AYAZ 2019, Lev. 18/Kat.No. 91; KOLENOĞLU 2019, Kat. No. 114.		

<p>Cat. No: 5</p>	<p>(Fig. 7)</p>	
<p>Excavation Inv. No: AAE 19</p>		
<p>Material: Terracotta</p>		
<p>Finding Location: Sütunlu (Colonnaded) Street</p>		
<p>Measurements: Length: 7.8 cm Width: 8.4 cm Hole Diameter: 1.1 cm Wall Thickness: 1.2 cm Weight: 195.75 g</p>		
<p>Clay Colour: 7.5 YR 6/4 Light Brown</p>		
<p>Additives: Moderate mica, fire clay, little lime and grit</p>		
<p>Description: Single and worn hanging hole, abrasions and fractures on the surface, circular seal with a diameter of 2 cm on the front, hard texture and powdery surface.</p>		
<p>Date: 6th–3rd century BC</p>		
<p>Analogues: KOLENOGLU 2019, Kat. No. 21, 28, 43, 110; YAMANTURK 2019, Kat. No. RhP. 6.</p>		
<p>Cat. No: 6</p>	<p>(Fig. 8)</p>	
<p>Excavation Inv. No: AAE 21</p>		
<p>Material: Terracotta</p>		
<p>Finding Location: Sütunlu (Colonnaded) Street</p>		
<p>Measurements: Length: 7.2 cm Width: 9.1 cm Hole Diameter: 00.7 mm Wall Thickness: 1–2.8 cm Weight: 196.42 g</p>		
<p>Clay Colour: 7.5 YR 6/4 Light Brown</p>		
<p>Additives: Dense lime, moderate mica and sand</p>		
<p>Description: Single and broken hanging hole, abrasions and fractures on the surface, three circular seals on the front, two of the same size and one of different size, hard texture, porous and powdery surface.</p>		
<p>Date: 6th–3rd century BC</p>		
<p>Analogues: DUNDAR 2012, Kat. No. 89; KOLENOGLU 2019, Kat. No. 8; YAMANTURK 2019, Kat. No. KÖS 35.</p>		
<p>Cat. No: 7</p>	<p>(Fig. 9)</p>	
<p>Excavation Inv. No: AAI 6</p>		
<p>Material: Terracotta</p>		
<p>Finding Location: Temple</p>		
<p>Measurements: Length: 7.6 cm Width: 8.1 cm Hole Diameter: 1.1 cm Wall Thickness: 1–2.4 cm Weight: 173.03 g</p>		
<p>Clay Colour: 2.5YR 6/8 Light Red</p>		
<p>Additives: Dense mica, moderate sand, little lime</p>		
<p>Description: Single intact hanging hole, abrasions and fractures on the surface, circular seal 1.9 cm in diameter on the front, hard texture and powdery surface.</p>		
<p>Date: 6th–3rd century BC</p>		
<p>Analogues: GOLDMAN 1950, Pl. 175/497; AYAZ 2019, Lev. 17/Kat. No. 88–Lev. 22/Kat. No. 112; OZDEMİR 2020, Kat. No. 24.</p>		
<p>Cat. No: 8</p>	<p>(Fig. 10)</p>	
<p>Excavation Inv. No: AAG 6</p>		
<p>Material: Terracotta</p>		
<p>Finding Location: Surface</p>		
<p>Measurements: Length: 9.6 cm Width: 8.7 cm Hole Diameter: 1.3 cm Wall Thickness: 2.4–3cm Weight: 286.04 g</p>		
<p>Clay Colour: 2.5YR 6/8 Light Red</p>		
<p>Additives: Dense mica, grit, sand</p>		
<p>Description: Single and intact hanging hole, little abrasion on the surface, moderate limestone layer on the surface and two horseshoe-shaped decorations on the front, hard texture and powdery surface.</p>		
<p>Date: 6th–3rd century BC</p>		
<p>Analogues: AYAZ 2019, Lev. 18/Kat. No. 94.</p>		

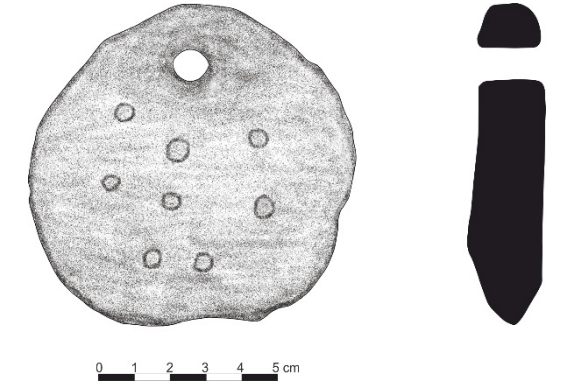
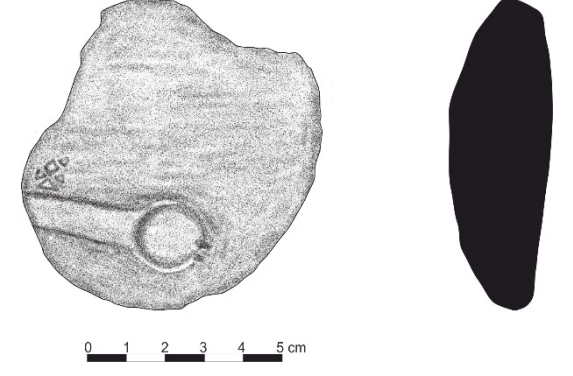
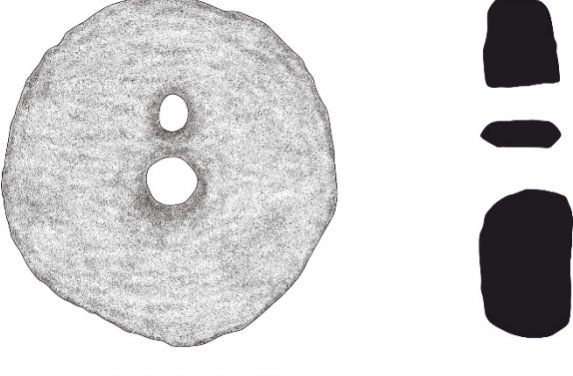
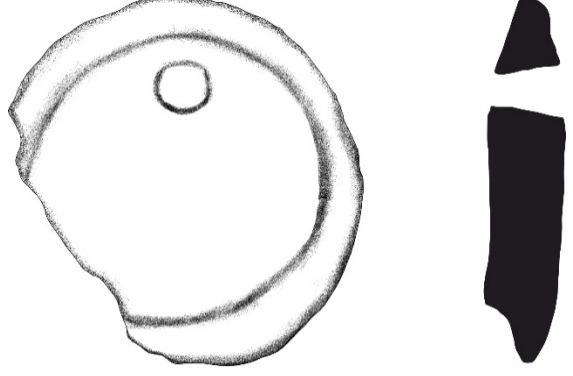
Cat. No: 9	(Fig. 11)	
Excavation Inv. No: AAG 7		
Material: Terracotta		
Finding Location: Surface		
Measurements: Length: 10 cm Width: 9.6 cm Hole Diameter: 1.5 cm		
Wall Thickness: 2.7 cm Weight: 281.09 g		
Clay Colour: 10YR 7/4 Very Pale Brown		
Additives: Dense mica, grit, sand		
Description: Single and intact hanging hole, abrasion on the surface, hard texture and powdery surface.		
Date: 6th–3rd century BC		
Analogues: AYZ 2019, Lev. 18/Kat. No. 90, 93; KOLENOGLU 2019, Kat. No. 25.		

Cat. No: 10	(Fig. 12)	
Excavation Inv. No: AAG 9		
Material: Terracotta		
Finding Location: Surface		
Measurements: Length: 10 cm Width: 8.4 cm Hole Diameter: 2.7 cm		
Wall Thickness: 2.1–2.6 cm Weight: 224.09 g		
Clay Colour: 2.5YR 6/6 Light Red		
Additives: Dense mica, quartz, lime and sand		
Description: Single and intact hanging hole, hard texture and powdery surface.		
Date: 6th–3rd century BC		
Analogues: AYZ 2019, Lev. 24/Kat. No. 127– Lev. 25/Kat. No. 130.		

Cat. No: 11	(Fig. 13)	
Excavation Inv. No: AAG 10		
Material: Terracotta		
Finding Location: Surface		
Measurements: Length: 9.8 cm Width: 8.5 cm Hole Diameter: 1.4 cm		
Wall Thickness: 1.9–2.4 cm Weight: 203.38 g		
Clay Colour: 2.5YR 5/4 Reddish Brown		
Additives: Sand, lime, mica and quartz		
Description: Single intact hanging hole, abrasions on the surface, hard texture and powdery surface.		
Date: 6th–3rd century BC		
Analogues: AYZ 2019, Lev. 22/Kat. No. 112.		

Cat. No: 12	(Fig. 14)	
Excavation Inv. No: AAG 11		
Material: Terracotta		
Finding Location: Surface		
Measurements: Length: 9.3 cm Width: 8.6 cm Hole Diameter: 1.1 cm		
Wall Thickness: 2.7 cm Weight: 297.50 g		
Clay Colour: Gley2 4/10B Dark Bluish Gray		
Additives: Moderate mica, sand, lime and quartz		
Description: Single and intact hanging hole, abrasion on the surface, circular seal on the front, hard texture, porous and powdery surface.		
Date: 6th–3rd century BC		
Analogues: GRACE 1956, Pl. 76/215; DUNDAR 2012, Kat. No. 85; AYZ 2019, Lev. 16/Kat. No. 84.		

<p>Cat. No: 13</p>	<p>(Fig. 15)</p>	
<p>Excavation Inv. No: AAG 13</p>		
<p>Material: Terracotta</p>		
<p>Finding Location: Surface</p>		
<p>Measurements: Length: 8.6 cm Width: 7.5 cm Hole Diameter: 1.3 cm</p>		
<p>Wall Thickness: 1.6–2.3 cm Weight: 150.02 g</p>		
<p>Clay Colour: 10YR 7/6 Yellow</p>		
<p>Additives: Little lime and quartz</p>		
<p>Description: Single and intact hanging hole, abrasions and fractures on the surface, hard texture, porous and powdery surface.</p>		
<p>Date: 6th–3rd century BC</p>		
<p>Analogues: OZDEMİR 2020, Kat. No. 16.</p>		
<p>Cat. No: 14</p>	<p>(Fig. 16)</p>	
<p>Excavation Inv. No: AAG 17</p>		
<p>Material: Terracotta</p>		
<p>Finding Location: Surface</p>		
<p>Measurements: Length: 12.4 cm Width: 10.8 cm Hole Diameter: 1–1.7 cm</p>		
<p>Wall Thickness: 3.4 cm Weight: 440.01 g</p>		
<p>Clay Colour: 2.5YR 5/6 Red</p>		
<p>Additives: Moderate mica, lime and large grit</p>		
<p>Description: Single, intact hanging hole, abrasions and fractures on the surface, middle limestone layer on the front and seal impression with rectangular inscription, hard texture, porous and powdery surface.</p>		
<p>Date: 6th–3rd century BC</p>		
<p>Analogues: AYZ 2019, Lev. 18/Kat. No. 94.</p>		
<p>Cat. No: 15</p>	<p>(Fig. 17)</p>	
<p>Excavation Inv. No: AAG 24</p>		
<p>Material: Terracotta</p>		
<p>Finding Location: Surface</p>		
<p>Measurements: Length: 9.7 cm Width: 9.2 cm Hole Diameter: 1 cm</p>		
<p>Wall Thickness: 2.5 cm Weight: 206.74 g</p>		
<p>Clay Colour: 10YR 8/3 Very Pale Brown</p>		
<p>Additives: Dense mica and moderate sand</p>		
<p>Description: Single and intact hanging hole, abrasions and fractures on the back, two circular seals 1.2 cm in diameter on the front, hard texture, porous and powdery surface.</p>		
<p>Date: 6th–3rd century BC</p>		
<p>Analogues: AYZ 2019, Lev. 24/Kat. No. 129.</p>		
<p>Cat. No: 16</p>	<p>(Fig. 18)</p>	
<p>Excavation Inv. No: AAG 31</p>		
<p>Material: Terracotta</p>		
<p>Finding Location: Surface</p>		
<p>Measurements: Length: 9.8 cm Width: 10 cm Hole Diameter: 3 cm</p>		
<p>Wall Thickness: 1.3 cm Weight: 184.60 g</p>		
<p>Clay Colour: 7.5YR 6/6 Reddish Yellow</p>		
<p>Additives: Moderate quartz and little mica</p>		
<p>Description: Single, intact hanging hole, abrasions on the surface, stamp seal in the form of an anklebone on the front, hard texture and powdery surface.</p>		
<p>Date: 6th–3rd century BC</p>		
<p>Analogues: AYZ 2019, Lev.17/Kat. No. 87–Lev. 19/Kat. No. 99– Lev. 21/Kat. No. 110–Lev.15/Kat. No. 80.</p>		

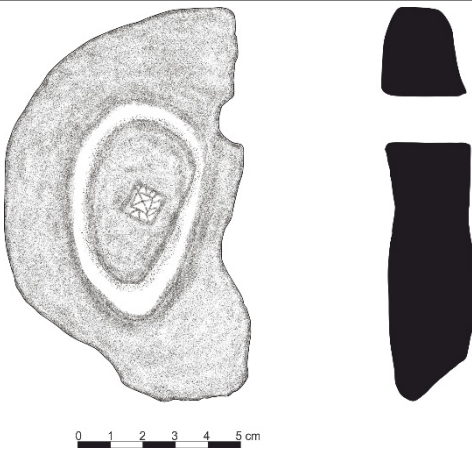
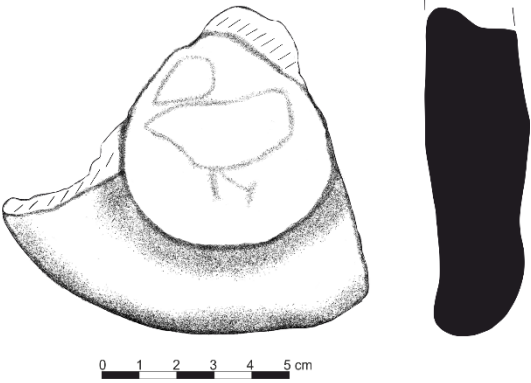
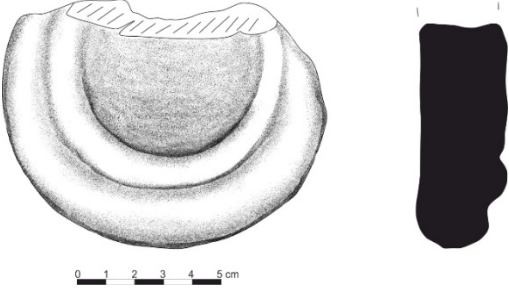
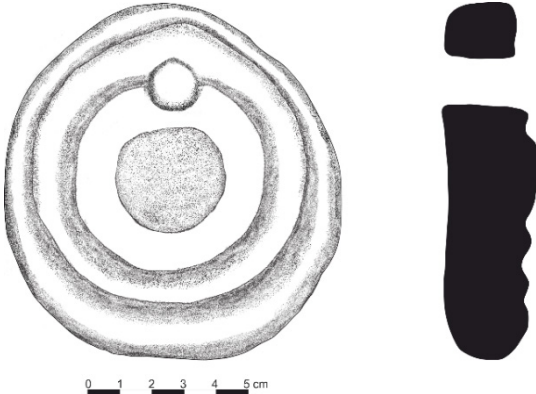
<p>Cat. No: 17</p>	<p>(Fig. 19)</p>	
<p>Excavation Inv. No: AAG 32</p>		
<p>Material: Terracotta</p>		
<p>Finding Location: Surface</p>		
<p>Measurements: Length: 8 cm Width: 8.3 cm Hole Diameter: 1.5 cm Wall Thickness: 2.8 cm Weight: 181.74 g</p>		
<p>Clay Colour: 10YR 7/4 Very Pale Brown</p>		
<p>Additives: Dense mica, dense sand</p>		
<p>Description: Single intact hanging hole, abrasions and fractures on the surface, eight circular seal impressions on the front, hard texture, porous and powdery surface.</p>		
<p>Date: 6th–3rd century BC</p>		
<p>Analogues: GOLDMAN 1940, Fig. 257/2; DAVIDSON 1952, Pl. 74/1124; AYAZ 2019, Lev. 16/Kat. No. 84</p>		
<p>Cat. No: 18</p>	<p>(Fig. 20)</p>	
<p>Excavation Inv. No: AAG 35</p>		
<p>Material: Terracotta</p>		
<p>Finding Location: Surface</p>		
<p>Measurements: Length: 8 cm Width: 7.7 cm Hole Diameter: – Wall Thickness: 2.6 cm Weight: 148.68 g</p>		
<p>Clay Colour: 10R 4/8 Red</p>		
<p>Additives: Dense mica, moderate quartz and sand</p>		
<p>Description: Broken hanging hole, abrasions and missing fragments on the surface, key-shaped decoration on the front with triangular decoration above, hard texture, porous and powdery surface.</p>		
<p>Date: 6th–3rd century BC</p>		
<p>Analogues: DAVIDSON 1952, Pl. 70/989–990; OZDEMİR 2020, Kat. No. 25.</p>		
<p>Cat. No: 19</p>	<p>(Fig. 21)</p>	
<p>Excavation Inv. No: AAG 8</p>		
<p>Material: Terracotta</p>		
<p>Finding Location: Surface</p>		
<p>Measurements: Length: 10 cm Width: 9.6 cm Hole Diameter: 1: 1.1 cm, 2: 1.4 cm Wall Thickness: 1.8–2.7 cm Weight: 203.27 g</p>		
<p>Clay Colour: 2.5YR 6/8 Light Red</p>		
<p>Additives: Dense mica, little lime and little grit</p>		
<p>Description: Two hanging holes intact, abrasions on the surface, hard texture and powdery surface.</p>		
<p>Date: 5th–4th century BC</p>		
<p>Analogues: KOLENOĞLU 2019, Kat. No. 199–252; OZDEMİR 2020, Kat. No. 17.</p>		
<p>Cat. No: 20</p>	<p>(Fig. 22)</p>	
<p>Excavation Inv. No: AAG 3</p>		
<p>Material: Terracotta</p>		
<p>Finding Location: Surface</p>		
<p>Measurements: Length: 12.5 cm Width: 11.8 cm Hole Diameter: 1.7 cm Wall Thickness: 1.2–2.4 cm Weight: 339.98 g</p>		
<p>Clay Colour: 2.5YR 6/8 Light Red</p>		
<p>Additives: Dense quartz, grit and mica</p>		
<p>Description: Single and intact hanging hole, abrasions and fractures on the surface, dished and single row of grooves on the front, hard texture and powdery surface.</p>		
<p>Date: Last quarter of the 4th century BC – first quarter of the 1st century BC</p>		
<p>Analogues: GOLDMAN 1950, Pl. 268/25–28.</p>		

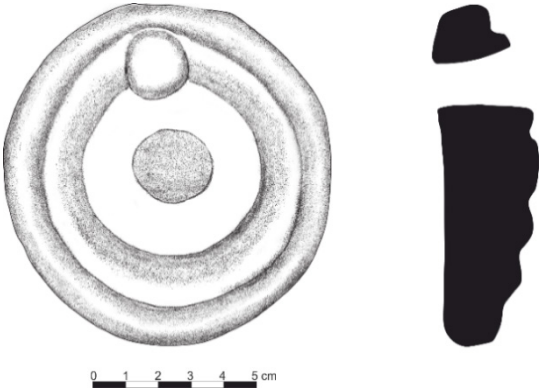
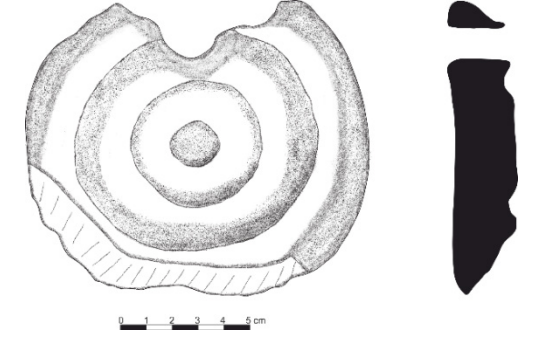
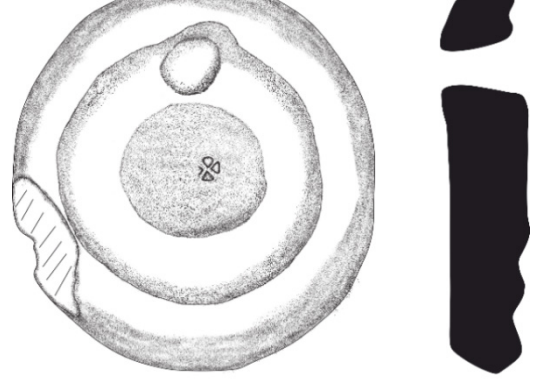
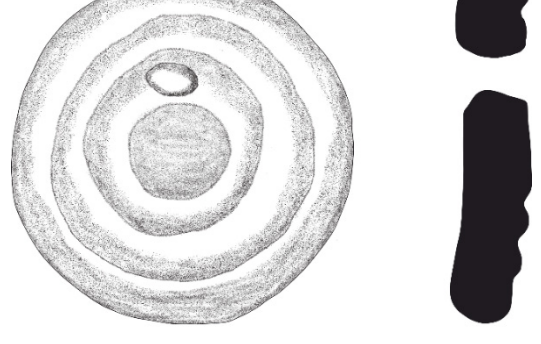
Cat. No: 21	(Fig. 23)	
Excavation Inv. No: AAG 4		
Material: Terracotta		
Finding Location: Surface		
Measurements: Length: 12.8 cm Width: 13.2 cm Hole Diameter: 1.9 cm		
Wall Thickness: 3.9 cm Weight: 500 g		
Clay Colour: 5YR 6/6 Dark Reddish		
Additives: Dense mica, dense grit and little lime		
Description: Single and intact hanging hole, abrasions and fractures on the surface, curvature and deep circular seal on the front, hard texture, porous and powdery surface.		
Date: 3rd–1st century BC		
Analogues: DAVIDSON/THOMPSON 1943, Fig. 41/146; DUNDAR 2012, Kat. No. 91; KOLENOGLU 2019, Kat. No. 73; OZDEMİR 2020, Kat. No. 32.		

Cat. No: 22	(Fig. 24)	
Excavation Inv. No: AAG 16		
Material: Terracotta		
Finding Location: Surface		
Measurements: Length: 10.4 cm Width: 12.6 cm Hole Diameter: 1.5 cm		
Wall Thickness: 3.4 cm Weight: 401.80 g		
Clay Colour: 2.5YR 6/6 Light Red		
Additives: Dense mica, little lime and fire clay		
Description: Single and intact hanging hole, abrasions and fractures on the surface, three deepened quadrangular seals on the front, hard texture, porous and powdery surface.		
Date: 3rd–1st century BC		
Analogues: AYZ 2019, Lev. 25/Kat. No. 130.		

Cat. No: 23	(Fig. 25)	
Excavation Inv. No: AAG 26		
Material: Terracotta		
Finding Location: Surface		
Ölçüleri: Uzunluk: 11 cm Width: 10 cm Hole Diameter: 3.4 cm Wall Thickness: 1.1–2.3 cm Weight: 386.46		
Clay Colour: 2.5YR 6/8 Light Red		
Additives: Dense mica, sand, moderate grit and little lime		
Description: Single intact hanging hole, abrasions and fractures on the surface, quadrangular seal impression on the front, hard texture, porous and powdery surface.		
Date: Last quarter of the 4th century BC – first quarter of the 1st century BC		
Analogues: AYZ 2019, Lev. 25/Kat. No. 130; OZDEMİR 2020, Kat. No. 25.		

Cat. No: 24	(Fig. 26)	
Excavation Inv. No: AAG 27		
Material: Terracotta		
Finding Location: Surface		
Measurements: Length: 9.5 cm Width: 8.9 cm Hole Diameter: 1 cm Wall Thickness: 3.4 cm Weight: 315.12 g		
Clay Colour: 2.5YR 7/6 Light Red		
Additives: Dense sand, mica, grit and little quartz		
Description: Single, intact hanging hole, abrasions and fractures on the surface, horseshoe-shaped impression on the front, hard texture and powdery surface.		
Date: Last quarter of the 4th century BC – first quarter of the 1st century BC		
Analogues: OZDEMİR 2020, Kat. No. 23.		

Cat. No: 25	(Fig. 27)	
Excavation Inv. No: AAE 22		
Material: Terracotta		
Finding Location: Sütunlu (Colonnaded) Street		
Measurements: Length: 12.1 cm Width: 7.6 cm Hole Diameter: 1.5 cm		
Wall Thickness: 2–2.5 cm Weight: 272.34 g		
Clay Colour: 2.5 YR 6/8 Light Red		
Additives: Dense mica, grit, fire clay, quartz, sand		
Description: Broken hanging hole, abrasions on the surface, half broken and incomplete, “X” decoration in a square on the front surrounded by a notch, hard texture, porous and powdery surface.		
Date: Last quarter of the 4th century BC – first quarter of the 1st century BC		
Analogues: GOLDMAN 1950, Fig. 175/461; AYAZ 2019, Lev. 19/Kat. No. 96.		
Cat. No: 26	(Fig. 28)	
Excavation Inv. No: AAE 23		
Material: Terracotta		
Finding Location: Sütunlu (Colonnaded) Street		
Measurements: Length: 8.6 cm Width: 9.7 cm Hole Diameter: – Wall Thickness: 2.5 cm Weight: 153.11 g		
Clay Colour: 7.5YR 6/4 Light Brown		
Additives: Dense sand, lime, mica and grit		
Description: Broken hanging hole, half broken and incomplete, with moulded (bird?) figure in relief in a circle on the front, hard texture, porous and powdery surface.		
Date: Last quarter of the 4th century BC – first quarter of the 1st century BC		
Analogues: DAVIDSON/THOMPSON 1943, Fig. 39/146; OZDEMİR 2020, Kat. No. 31.		
Cat. No: 27	(Fig. 29)	
Excavation Inv. No: AAE 24		
Material: Terracotta		
Finding Location: Sütunlu (Colonnaded) Street		
Measurements: Length: 8.5 cm Width: 11 cm Hole Diameter: –Wall Thickness: 3 cm Weight: 444.24 g		
Clay Colour: 10R 4/3 Weak Red/Gley 1, 4 Dark Gray		
Additives: Moderate mica, fire clay, little lime and grit		
Description: Broken hanging hole, abrasions and fracture on the surface, two convex concentric circular grooves on the front, porous, hard texture and powdery surface.		
Date: 3rd–1st century BC		
Analogues: DAVIDSON/THOMPSON 1943, Fig. 41/No. 147; GOLDMAN 1950, Pl. 269/35.		
Cat. No: 28	(Fig. 30)	
Excavation Inv. No: AAG 20		
Material: Terracotta		
Finding Location: Surface		
Measurements: Length: 11.1 cm Width: 10.5 cm Hole Diameter: 1.7 cm		
Wall Thickness: 3.4 cm Weight: 440.01 g		
Clay Colour: 2.5YR 5/6 Red		
Additives: Dense fire clay, mica, moderate quartz and grit		
Description: Single, intact hanging hole, three convex concentric circular grooves on the front, hard texture and powdery surface.		
Date: 3rd–1st century BC		
Analogues: GOLDMAN 1950, Pl. 269/35; AYAZ 2019, Lev. 21/Kat. No. 105.		

<p>Cat. No: 29</p>	<p>(Fig. 31)</p>	
<p>Excavation Inv. No: AAG 21</p>		
<p>Material: Terracotta</p>		
<p>Finding Location: Surface</p>		
<p>Measurements: Length: 10.5 cm Width: 10 cm Hole Diameter: 2 cm Wall Thickness: 2.9 cm Weight: 251.16 g</p>		
<p>Clay Colour: 2.5YR 6/6 Light Red</p>		
<p>Additives: Dense mica, grit and little quartz</p>		
<p>Description: Single, intact hanging hole, three convex deepened concentric circular grooves on the front, dense layer of limestone on the front surface, hard texture and powdery surface.</p>		
<p>Date: 3rd–1st century BC</p>		
<p>Analogues: GOLDMAN 1950, Pl. 269/35; DAVIDSON 1952, Pl. 77/1208; AYZ 2019, Lev. 21/Kat. No. 107.</p>		
<p>Cat. No: 30</p>	<p>(Fig. 32)</p>	
<p>Excavation Inv. No: AAI 1</p>		
<p>Material: Terracotta</p>		
<p>Finding Location: Surface</p>		
<p>Measurements: Length: 11.4 cm Width: 13.2 cm Hole Diameter: 1.2 cm Wall Thickness: 2.5 cm Weight: 409.97 g</p>		
<p>Clay Colour: 2.5YR 6/6 Light Red</p>		
<p>Additives: Dense grit, dense mica and lime</p>		
<p>Description: Broken single hanging hole, abrasions and fractures on the surface, incomplete, dense layer of limestone on the front, four concentric circular grooves, hard texture and powdery surface.</p>		
<p>Date: 3rd–1st century BC</p>		
<p>Analogues: GOLDMAN 1950, Pl. 269/35; OZDEMİR 2020, Kat. No. 27.</p>		
<p>Cat. No: 31</p>	<p>(Fig. 33)</p>	
<p>Excavation Inv. No: AAG 18</p>		
<p>Material: Terracotta</p>		
<p>Finding Location: Surface</p>		
<p>Measurements: Length: 12 cm Width: 11.1 cm Hole Diameter: 1–1.9 cm Wall Thickness: 2.6 cm Weight: 331.78 g</p>		
<p>Clay Colour: 7.5YR 7/4 Pink</p>		
<p>Additives: Dense mica and little quartz</p>		
<p>Description: Single intact hanging hole, abrasions and fractures on the surface, floral print decoration on the front with three deepened concentric circular grooves and small triangles in the centre, intense burn marks on the front and back, hard texture, porous and powdery surface.</p>		
<p>Date: 6th–5th century BC</p>		
<p>Analogues: GOLDMAN 1950, Pl. 269/35; AYZ 2019, Lev. 17/Kat. No. 88.</p>		
<p>Cat. No: 32</p>	<p>(Fig. 34)</p>	
<p>Excavation Inv. No: AAG 19</p>		
<p>Material: Terracotta</p>		
<p>Finding Location: Surface</p>		
<p>Measurements: Length: 11.6 cm Width: 11.4 cm Hole Diameter: 1.7 cm Wall Thickness: 2.3 cm Weight: 310.01 g</p>		
<p>Clay Colour: 2.5YR 5/8 Red</p>		
<p>Additives: Dense mica, quartz, fire clay, lime</p>		
<p>Description: Single intact hanging hole, three deepened concentric circular grooves on the front, hard texture and powdery surface.</p>		
<p>Date: 6th–5th century BC</p>		
<p>Analogues: GOLDMAN 1950, Pl. 269/32; AYZ 2019, Lev. 18/Kat. No. 90.</p>		

Cat. No: 33	(Fig. 35)	
Excavation Inv. No: AAG 23		
Material: Terracotta		
Finding Location: Surface		
Measurements: Length: 10.8 cm Width: 9.9 cm Hole Diameter: 1.9 cm		
Wall Thickness: 1.9–2.5 cm Weight: 246.44 g		
Clay Colour: 2.5YR 6/6 Light Red		
Additives: Dense quartz, moderate fire clay, little lime and little sand		
Description: Single and intact hanging hole, dense limestone layer on the surface, four concentric circular grooves on the front face, hard texture, porous and powdery surface.		
Date: 6th–5th century BC		
Analogues: GOLDMAN 1950, Pl. 268/29.		

Cat. No: 34	(Fig. 36)	
Excavation Inv. No: AAG 25		
Material: Terracotta		
Finding Location: Surface		
Measurements: Length: 11.5 cm Width: 10.8 cm Hole Diameter: 2 cm		
Wall Thickness: 2.2 cm Weight: 284.20 g		
Clay Colour: 7.5YR 6/4 Light Brown		
Additives: Mica, lime and grit		
Description: Single and intact hanging hole, dense layer of limestone on the back, the top of the hanging hole is higher than those in other weaving weights, five concentric circular grooves on the front that narrow towards the centre, hard texture and powdery surface.		
Date: 6th–5th century BC		
Analogues: GOLDMAN 1950, Pl. 269/35.		

Cat. No: 35	(Fig. 37)	
Excavation Inv. No: AAH 1		
Material: Terracotta		
Finding Location: Temple		
Measurements: Length: 12 cm Width: 7 cm Hole Diameter: 1.5–2.6 cm		
Wall Thickness: 1.6–2.6 cm Weight: 210.04 g		
Clay Colour: 10 R 6/4 light Yellowish Brown		
Additives: Moderate sand, deep lime and mica		
Description: Broken hanging hole, abrasions on the surface, half broken and incomplete, four concentric circular grooves on the front, the outer groove has a deep circular seal on the edge of the axis, hard texture, porous and powdery surface.		
Date: 6th–5th century BC		
Analogues: GOLDMAN 1950, Pl. 269/35; DUNDAR 2012, Kat. No. 84.		

REFERENCES

AYAZ 2019

Ayaz, G., *Assos'ta Yunan ve Roma Döneminde Dokuma Aletleri*, Unpublished Master Thesis, Onsekiz Mart Üniversitesi, Sosyal Bilimler Enstitüsü, Çanakkale.

BARBER 1991

Barber, E. J. W., *Prehistoric Textiles. The Development of Cloth in the Neolithic and Bronze Ages, with Special Reference to the Aegean* (Princeton: Princeton University Press).

CAN *et alii* 2017

Can, B./Çakır, A./Cannon, B./Murphy, D./Kızılarşanoğlu, H. A., *Surveys at Syedra 2016 (Second Season) /Syedra 2016 (İkinci Sezon) Yüzeysel Araştırmaları, ANMED. News Bulletin on Archaeology from Mediterranean Anatolia* 15, 242–250.

CAN 2017

Can, B., Syedra ve Territoryumu. In: Adıbelli, I. A./İlgezdi Bertram, G./Matsumura, K./Baştürk, E./Koyuncu, C./Kızılarıslanoğlu, H. A./Yedidağ, T. Y./Topaloğlu Uzunel, A. (eds.), *Barış Salman Anı Kitabı* (İstanbul: Ege Yayınları), 37–52.

DAVIDSON/THOMPSON 1943

Davidson, G. R./Thompson, D. B., *Small Object From The Pnyx I*, Hesperia Supplement VII (Amsterdam: Swets & Zeitlinger B.V.).

DAVIDSON 1952

Davidson, G. R., *The Minor Objects*. Corint XII (Princeton, New Jersey: The American School of Classical Studies at Athens).

DUNDAR 2012

Dündar, E., *Patara Kazılarında Ele Geçen (1989–2010 Yılları) Arkaik, Klasik ve Hellenistik Dönem Ticari Amphoralar ve Amphora Mühürleri*, Unpublished PhD Thesis, Akdeniz Üniversitesi, Sosyal Bilimler Enstitüsü, Antalya.

ERGUN 2013

Ergün, G., *Beycesultan Höyük Tunç Çağı Ağırşaklar ve Dokuma Weightları*, Unpublished Master Thesis, Ege Üniversitesi, Sosyal Bilimler Enstitüsü, İzmir.

ERGURER 2023

Ergürer, H. E., Herakles'in Kenti Syedra, *Aktüel Arkeoloji* 90, 24–115.

FAZLIOGLU 2001

Fazlıoğlu, İ., *Eskiçağ'da Dokuma*, Unpublished Master Thesis, Ege Yayınları, İstanbul, 24–28.

FRENCH 2014

French, D. H., *Roman Roads and Milestones of Asia Minor. Vol. 3: Milestones. Fasc. 3.6: Lycia et Pamphylia* (Ankara: British Institute at Ankara).

GOLDMAN 1940

Goldman, H., The Acropolis of Halae, *Hesperia*.9/4, 381–514.

GOLDMAN 1950

Goldman, H., *Excavations at Gözülü kule, Tarsus. Vol. I: The Hellenistic and Roman Period* (Princeton: Princeton University Press).

GONUL 1964

Gonul, M., Dokumacılığın Tarihçesi ve En Eski Dokuma Aletleri, *Ankara Üniversitesi Dil ve Tarih-Coğrafya Fakültesi Antropoloji Dergisi* 2, 85–86.

GRACE 1956

Grace, V., *Stamped Wine Jar Fragments*. In: Talcott, L./Philippaki, B./Edwards, G. R./Grace, V. R. (eds.), *Small Objects from the Pnyx II*, Hesperia Supplements Vol. 10 (Princeton, New Jersey: The American School of Classical Studies at Athens), 113–189.

HIEROCLES, SYNECEDEMUS

Hierocles, *Synecdemus. Accedunt Fragmenta Apud Constantinum Porphyrogenetum Servata et Nomina Urbium Mutata*, transl. Burckhardt, A. (Leipzig: Teubner, 1893).

HUBER 1993

Huber, G., Syedra, *Anzeiger der Philosophisch-Historische Klasse* 129, 27–78.

KARAMUT 1996

Karamut, İ., 1994 Yılı Syedra Antik Kenti Çevre Düzenleme Çalışmaları, *VI. Müze Kurtarma Kazıları Semineri*, Ankara, 78.

KARAMUT 1997

Karamut, İ., 1995 Yılı Syedra Antik Kenti Çevre Düzenleme ve Kurtarma Kazısı Çalışmaları, *VII. Müze Kurtarma Kazıları Semineri*, Kuşadası, 49–56.

KOLENOGLU 2019

Kolenoglu, D. A., *Grek ve Roma Dönemi İonia Bölgesi Dokumacılık ve Dokuma Teknolojileri*, Unpublished Master Thesis, Ankara Üniversitesi. Sosyal Bilimler Enstitüsü, Ankara.

LASSEN 2013

Lassen, A. W., Technology and Palace Economy in Middle Bronze

Age Anatolia: the Case of the Crescent Shaped Loom Weight. In: Nosch, M. L./Koefoed, H./Andersson Strand, E. (eds.), *Textile Production and Consumption in The Ancient Near East, Archaeology, Epigraphy, Iconography* (Oxford and Oakville: Oxbow Books), 78–92.

MITFORD 1980

Mitford, T. B., Roman Rough Cilicia. Temporini, H./Haase/ W. (eds.), *Aufstieg und Niedergang der Römischen Welt. Geschichte und Kultur Roms im Spiegel der neueren Forschung*, Vol. II: *Principat, 7.2: Politische Geschichte. Provinzen und Randvölker, griechischer Balkanraum, Kleinasien* (Berlin-New York: de Gruyter), 1230–1261..

OZDEMIR 2020

Özdemir, Y., *Parion Antik Kentinde Ele Geçen Terracotta, Taş, Kemik Dokuma Tezgâh Weightları ve Ağırşaklar*, Unpublished Master Thesis, Ondokuz Mayıs Üniversitesi, Lisansüstü Eğitim Enstitüsü, Samsun.

OZDEMIR 2023

Özdemir, Y., Parion'dan Ele Geçen Terracotta Dokuma Tezgâhı Ağırlıkları, *Anatolian Archaeology* 1, 1–42.

PTOLEMAIUS, GEOGRAPHIA

Ptolemaius, C., *Geographia*, transl. Stevenson, E. L. (New York: Dover Publications, 1932).

MERKELBACH/STAUBER 1996

Merkelbach, R./Stauber, J., Die Orakel des Apollon von Klaros, *Epigraphica Anatolica* 27, 1–54.

STEPHANUS BYZANTINOS, ETHNICORUM

Stephanos Byzantinos, *Ethnicorum*, transl. Meinekii, A. (Berolini: Impensis G. Reimeri, 1849).

TAMSU/AKÇA 2002

Tamsü, R./Akça, S., Eskiçağ'da Dokumacılığın Başlangıcı ve Terracotta Dokuma Aletleri. In: *II. Uluslararası Terracotta Sempozyumu Bildiriler Kitabı: 17–30 Haziran 2002 Eskişehir-Türkiye*, Tepebaşı Belediyesi Yayını, Eskişehir, 201–209.

YAMANTURK 2019

Yamantürk, A., *Soli Pompeipolis Mühürlü Amphora Kulpları*, Unpublished Master Thesis, Süleyman Demirel Üniversitesi, Sosyal Bilimler Enstitüsü, Isparta.

YILMAZ 2016

Yılmaz, D., Geç Tunç Çağı'nda Batı Anadolu'da Tekstil Üretimi: Çine-Tepecik Höyüğü Tezgâh Weightları, *TÜBA-AR: Türkiye Bilimler Akademisi Arkeoloji Dergisi* 19, 102–103.



Fig. 1. Syedra Ancient City Map (Syedra Excavation Archive)

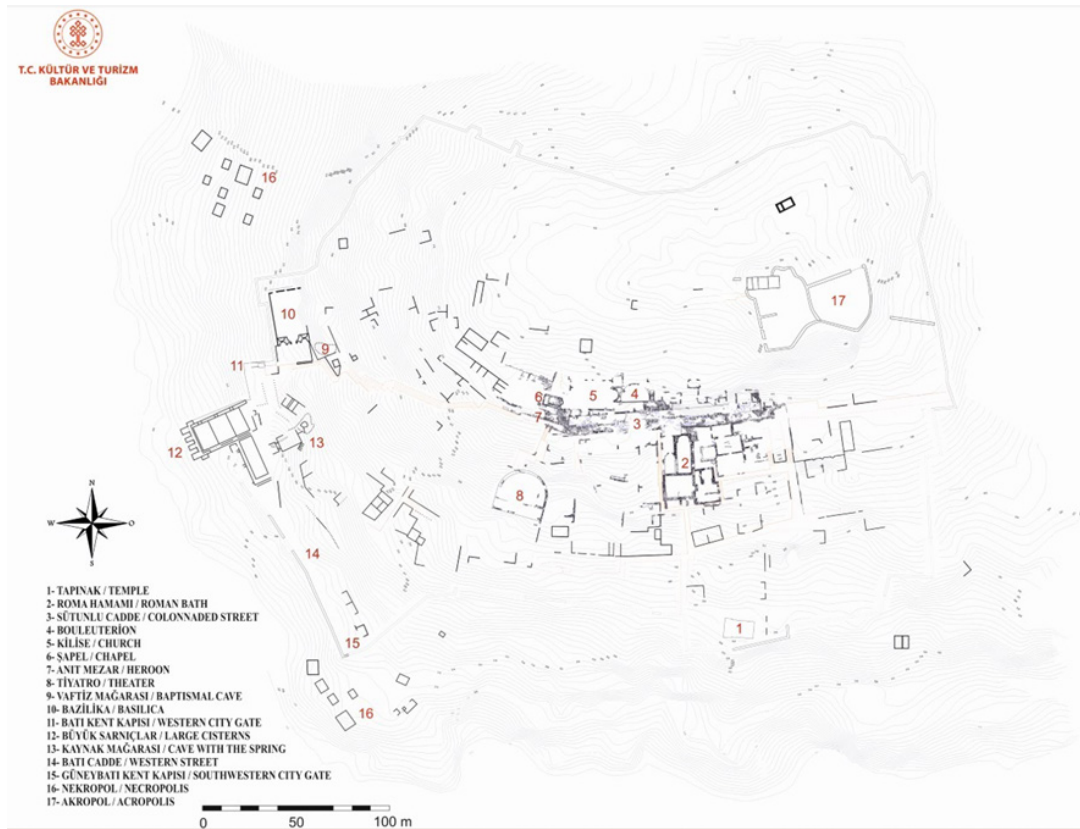


Fig. 2. Syedra Ancient City Plan (Syedra Excavation Archive)



Fig. 3



Fig. 4



Fig. 5



Fig. 6



Fig. 7



Fig. 8



Fig. 9



Fig. 10



Fig. 11



Fig. 12



Fig. 13



Fig. 14



Fig. 15



Fig. 16

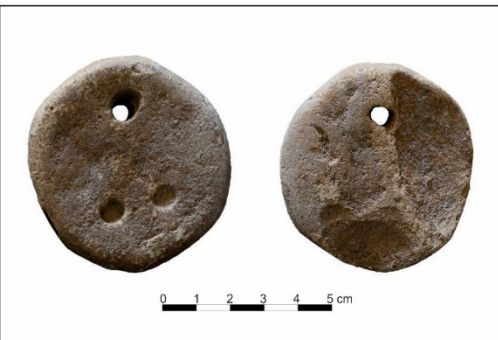


Fig. 17



Fig. 18



Fig. 19



Fig. 20



Fig. 21

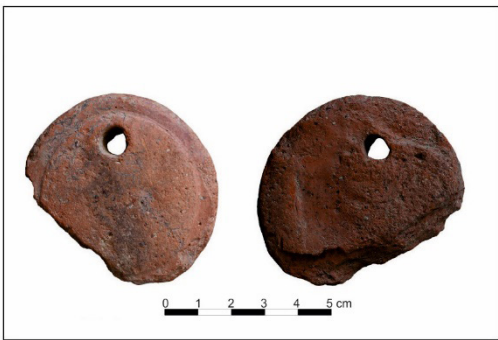


Fig. 22



Fig. 23

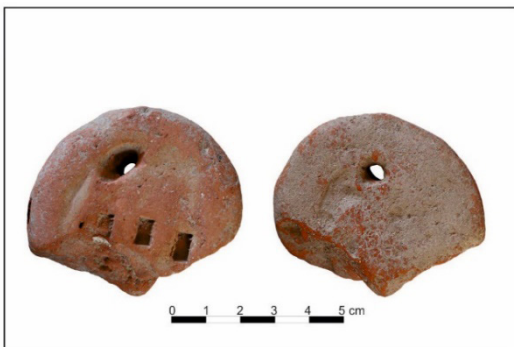


Fig. 24



Fig. 25



Fig. 26



Fig. 27



Fig. 28



Fig. 29



Fig. 30



Fig. 31



Fig. 32



Fig. 33



Fig. 34



Fig. 35



Fig. 36



Fig. 37